

# Orthopedics and Bracing

---

SOLUTIONS



Since 1973, DeRoyal Industries, Inc. has been committed to improving the clinical quality and economic health of its customers.

**Contact us at:**

[customerservice@deroyal.com](mailto:customerservice@deroyal.com)

or

888.938.7828/865.938.7828

 DeRoyal®

# Table of Contents

## HEAD/NECK

Foam Collars . . . . .	3 - 5
Rigid Cervical Collars . . . . .	6
Extrication Collars . . . . .	7
Post-Op Collars . . . . .	8 - 9
Cervical Traction . . . . .	10 - 11

## TORSO/SPINE

Spine Bracing . . . . .	12 - 20
Lumbo Sacral Supports . . . . .	20 - 22
Rib Belts . . . . .	23
Abdominal Binders . . . . .	24 - 25

## SHOULDER/CLAVICLE

Clavicle Straps . . . . .	26
Sling & Swathes . . . . .	27 - 28
Shoulder Immobilizers with Waist Strap . . . . .	29 - 30
Foam Shoulder Immobilizers . . . . .	31
Elastic Shoulder Immobilizers . . . . .	32
Shoulder Abduction . . . . .	33 - 35

## ARM/ELBOW

Arm Slings . . . . .	36 - 39
Arm Elevators . . . . .	40
Elbow Bracing . . . . .	41
Elbow Supports . . . . .	42 - 44

## WRIST, HAND, AND FOREARM

Wrist & Wrist/Forearm . . . . .	45 - 48
Wrist . . . . .	49 - 51
Wrist & Thumb . . . . .	52 - 55
Wrist & Hand . . . . .	56
Finger Splints . . . . .	57 - 66
Aluminum Splints . . . . .	67 - 68

## FRACTURE BRACING AND SPLINTS

Fracture Bracing . . . . .	69
----------------------------	----

## KNEE/LEG

Post-Op Knee Bracing . . . . .	70 - 71
OA/ACL Bracing . . . . .	71 - 73
Hinged Knee Bracing . . . . .	74 - 76
Patellofemoral Stabilizers . . . . .	76 - 77
Knee Supports . . . . .	78 - 81
Knee Immobilizers . . . . .	82 - 88
Buck's Traction . . . . .	89 - 90

# Table of Contents

## FOOT/ANKLE

Ankle Stirrups . . . . .	91 - 92
Ankle Bracing . . . . .	93 - 96
Ankle Supports . . . . .	97 - 98
Ankle/Foot Orthoses . . . . .	99
Night Splints . . . . .	100
Heel Cups . . . . .	100
Walker Boots . . . . .	101 - 105
Post-Op Shoes . . . . .	106 - 109
Cast Shoes . . . . .	110 - 111

## MISCELLANEOUS

Specialty Products . . . . .	112 - 117
------------------------------	-----------

## REHAB AND THERAPY

Exercise & Therapy . . . . .	118
Mobility . . . . .	119 - 120
Aids to Daily Living . . . . .	121 - 123
Crutches/Canes/Walkers . . . . .	124

## TEMPERATURE THERAPY

Therapy Units . . . . .	125 - 126
Therapy Blankets & Wraps . . . . .	127 - 128
Active Wrap™ Thermal Supports . . . . .	129 - 130
Thermal Supports . . . . .	131
Accessories . . . . .	132

Trademark Attributions . . . . .	133
----------------------------------	-----

## HCPCS DISCLAIMER

Information related to L-Codes or ICD-10 Codes for use in determining the proper Medicare or Medicaid reimbursement status for any DeRoyal product listed in this catalog, represents the best efforts of DeRoyal Industries, Inc. in determining relevant L-Codes and corresponding diagnoses for certain of DeRoyal's products. This information is provided as a no-cost service to customers of DeRoyal. The information is compiled from the descriptors and functions associated with the L-Codes and a review of ICD-10 Codes from publicly available information and anecdotal information obtained from sources familiar with the billing process as indicated above. However, only the appropriate Medicare authority can ultimately determine the appropriateness of reimbursement of a particular product, for a particular patient, given the appropriate diagnosis. DeRoyal strongly cautions the users of this information to verify the applicability of a given L-Code and/or ICD-10 Code in a particular situation prior to seeking reimbursement for a DeRoyal® product.

### Contoured Cervical Collar

- Medium density foam construction
- Breathable cotton stockinette liner
- Additional cover included for better patient hygiene
- Deep contour holds the head in a neutral position

**Indications:** Cervical facet syndrome; Cervical sprains and strains; Discogenic pain; Degenerative disc disease with and without radiculopathy

Size	Length	2½"	3"	4"
Universal	22"	1061-00	1057-00	1056-00
X-Small	13"	1061-01	1057-01	—
Small	15"	1061-02	1057-02	1056-02
Medium	17"	1061-03	1057-03	1056-03
Large	18"	1061-04	1057-04	1056-04
X-Large	20"	1061-05	1057-05	1056-05



HCPCS CODE: L0120

### Medium Density Cervical Collar

- Medium density foam construction
- Breathable cotton stockinette liner
- Additional cover included for better patient hygiene

**Indications:** Cervical facet syndrome; Cervical sprains and strains; Discogenic pain; Degenerative disc disease with and without radiculopathy

Size	Length	2½"	3"	3½"	4"
Medium	18"	1020251	1020301	1020351	1020401
Large	20"	1030251	1030301	1030351	1030401



HCPCS CODE: L0120



HCPCS CODE: L0120

### Comfo-EZE™ Cervical Collar

- Highest quality medium density foam construction
- Breathable synthetic stockinette liner
- Additional cover included for better patient hygiene
- Available in wide and narrow styles

**Indications:** Cervical facet syndrome; Cervical sprains and strains; Discogenic pain; Degenerative disc disease with and without radiculopathy

Size	Dimensions	Wide
X-Small	3½" x 19½"	1001-01
Small	4" x 20½"	1001-02
Medium	4" x 22½"	1001-03
Large	4" x 23½"	1001-04
X-Large	4½" x 25½"	1001-05

Size	Dimensions	Regular
X-Small	3" x 19½"	1002-01
Small	3½" x 20½"	1002-02
Medium	3½" x 22½"	1002-03
Large	3½" x 23½"	1002-04
X-Large	3½" x 25½"	1002-05

Size	Dimensions	Narrow
X-Small	2" x 19½"	1003-01
Small	2" x 20½"	1003-02
Medium	2" x 22½"	1003-03
Large	2" x 23½"	1003-04
X-Large	2" x 25½"	1003-05

Size	Dimensions	Pediatric
Pediatric Small	2½" x 14"	1004-01
Pediatric Large	3½" x 17"	1004-02



HCPCS CODE: L0120

### Serpentine Cervical Collar

- Firm density foam construction
- Breathable synthetic stockinette liner
- Additional cover included for better patient hygiene
- Contoured serpentine design for patient comfort

**Indications:** Cervical facet syndrome; Cervical sprains and strains; Discogenic pain; Degenerative disc disease with and without radiculopathy

Size	Dimensions	Product #
Small	3½" x 17"	1006-02
Small, X-Wide	3¾" x 18"	1006-01
Small, X-Long	3¾" x 24½"	1006-05
Medium	4" x 20"	1006-03
Large	4" x 24"	1006-04

### Soft Foam Cervical Collar

- Soft density foam construction
- Breathable cotton stockinette liner
- Packaged 6/Case

**Indications:** Cervical facet syndrome; Cervical sprains and strains; Discogenic pain; Degenerative disc disease with and without radiculopathy

Size	Dimensions	Product #
X-Small	3" x 19½"	1018-01
Small	3½" x 20½"	1018-02
Medium	3½" x 22½"	1018-03
Large	3½" x 23½"	1018-04
X-Large	3½" x 25½"	1018-05



HCPCS CODE: L0120

### Economy Foam Cervical Collar

- Soft density foam construction
- Breathable cotton stockinette liner

**Indications:** Cervical facet syndrome; Cervical sprains and strains; Discogenic pain; Degenerative disc disease with and without radiculopathy

Size	Dimensions	Product #
Universal	3" x 24"	A115000
Universal	4" x 24"	A117000
Universal	4½" x 24"	A118000

Size	Length	3"	4"
Small	16"	A115005	A117005
Medium	18"	A115006	A117006
Large	20"	A115007	A117007
X-Large	22"	A115008	A117008



HCPCS CODE: L0120



HCPCS CODE: L0172

### Rigid Cervical Collar

- 2-piece design restricts flexion, extension and rotation while supporting the occipital and mandibular areas
- Constructed of Plastazote® foam
- Large trachea opening allows quick access for carotid pulse monitoring, emergency airway procedures and visualization
- Posterior ventilation holes reduce heat and moisture
- Not made with natural rubber latex

**Indications:** Provides superior immobilization for both extrication and rehabilitation; Post-operative discectomy and cervical fusion

Size	Circumference	1.25"	1.75"	2.25"	3.25"	4.25"	5.25"
Infant	6" - 8"	A9917-01	—	—	—	—	—
Pediatric	8" - 11"	—	A9917-00	—	—	—	—
Small	10" - 13"	—	—	A9918-11	A9919-11	A9916-11	A9920-11
Medium	13" - 16"	—	—	A9918-12	A9919-12	A9916-12	A9920-12
Large	16" - 19"	—	—	A9918-13	A9919-13	A9916-13	A9920-13
X-Large	19" +	—	—	A9918-14	A9919-14	A9916-14	A9920-14



### EMT Select Extrication Collar

- 1-piece flat design allows efficient storage where space is limited
- Universal/adjustable to four adult and three pediatric sizes
- Locking tabs, slide adjustment and reflective sizing indicators for maximum hold
- Closed-cell foam liner to help prevent skin breakdown
- Large trachea opening allows easy access for carotid pulse monitoring, emergency airway procedures and visualization

**Indications:** Provides superior immobilization for both extrication and rehabilitation; Cervical trauma

Size	Front	Circumference	Qty	Product #
Adult	3½"	11" - 23"	1 Each	1044-31
			20/Case	1044-30
			100/Case	1044-90
Pediatric	1½"	8" - 18"	1 Each	1044-41
			20/Case	1044-40



HCPCS CODE: L0150

### One-Piece Extrication Collar

- 1-piece flat design allows efficient storage where space is limited
- Four adult and two pediatric sizes ensure accurate fit
- Color-coded for quick size reference
- Large trachea opening allows easy access for carotid pulse monitoring, emergency airway procedures and visualization

**Indications:** Provides superior immobilization for both extrication and rehabilitation; Cervical trauma

Size	Front	Circumference	Product #
Infant	1½"	8" - 18"	1044-80
Pediatric	1¾"	8" - 18"	1044-81
Low	1¾"	11" - 23"	1044-82
Short	2½"	11" - 23"	1044-83
Regular	3"	11" - 23"	1044-84
Tall	3½"	11" - 23"	1044-85



HCPCS CODE: L0150



HCPCS CODE: L0172

### XTW Extended Wear Collar

- Designed to help restrict flexion, extension, lateral bending and axial rotation
- High density polyethylene frame for maximum rigidity and support
- Shoulder and mandible contours for increased stability
- Anterior and posterior flex tabs for individual comfort
- Open-cell liner helps prevent skin breakdown
- Five adult and five child sizes to ensure best patient fit
- Not made with natural rubber latex

**Indications:** Cervical sprains and strains; Cervical spinal stenosis; Cervical disc displacement; Cervical arthritis; Whiplash injury; Cervical spondylosis and spondylolisthesis; Degenerative disc disease; Cervicalgia

Size*	Collar	Collar & Pad Set	Pad Set Only
Adult X-Short	11201000	11202000	11223000
Adult Short	11211000	11212000	11223000
Adult Regular	11221000	11222000	11223000
Adult Tall	11231000	11232000	11223000
Adult X-Tall	11241000	11242000	11223000
Infant Short	11251000	11252000	11253000
Infant Regular	11261000	11262000	11263000
Child Tot	11271000	11272000	11293000
Child Short	11281000	11282000	11293000
Child Regular	11291000	11292000	11293000

\*Measure using the XTW Sizing Guide



HCPCS CODE: L0174

### Capital™ Collar Enhanced

Powered by the BOA® Fit System

- Patented design featuring a micro-adjustable dial powered by the BOA® Fit System that allows collar height modification to fit most patients
- Includes compliance ring to ensure patient compliance
- Reinforced sternal padding for optimum support and comfort
- Designed to help restrict flexion, extension, lateral bending and axial rotation
- Shoulder, mandible and occipital contours for increased stability
- Sheer finished open-cell liner is specifically designed to help prevent skin breakdown and provide sustained comfort during long-term use
- Not made with natural rubber latex

**Indications:** Cervical sprains and strains; Cervical spinal stenosis; Cervical disc displacement; Cervical arthritis; Whiplash injury; Cervical spondylosis and spondylolisthesis; Degenerative disc disease; Cervicalgia

Size	Collar	Collar & Pad Set	Pad Set Only
Universal	11311000	11312000	11313000

### Capital™ Cervical Collar

- Designed to help restrict flexion, extension, lateral bending and axial rotation
- Reinforced sternal padding for optimal support and comfort
- Shoulder and mandible contours for increased stability
- Sheer finished open-cell liner is specifically designed to help prevent skin breakdown and provide sustained comfort during long-term use
- Not made with natural rubber latex

**Indications:** Cervical sprains and strains; Cervical spinal stenosis; Cervical disc displacement; Cervical arthritis; Whiplash injury; Cervical spondylosis and spondylolisthesis; Degenerative disc disease; Cervicalgia



HCPCS CODE: L0174

Size*	Collar	Collar & Pad Set	Pad Set Only
Adult Super Short	11421000	11422000	11423000
Adult Stout	11431000	11432000	11433000
Adult X-Small	11441000	11442000	11443000
Adult Short	11451000	11452000	11423000
Adult Regular	11461000	11462000	11423000
Adult Large	11471000	11472000	11423000
Infant 0- 6 Months	11481000	11482000	11483000
Infant 6 Months- 2 Years	11481001	11482001	11483001
Child 2- 6 Years	11481002	11482002	11483002
Child 6- 12 Years	11481003	11482003	11483003

\*Measure using the Capital™ Collar Sizing Guide



HCPCS CODE: E0942

### Deluxe Head Halter

- Constructed of perforated foam material with tricot lining
- Designed to provide anterior tilt cervical traction
- Halter is easily adjustable with hook and loop closures
- Spreader bar not included

**Indications:** Degenerative disc disease; Cervical facet syndrome; Herniated nucleus pulposus with or without radiculopathy; Chronic cervical strains

Size	Product #
Small	6101-01
Medium	6101-02
Large	6101-03



HCPCS CODE: E0942

### Discard Head Halter

- Available in cotton or flannel material
- Product can be applied for hyperextension or flexion
- Spreader bar not included
- Packaged 12/Case

**Indications:** Degenerative disc disease; Cervical facet syndrome; Herniated nucleus pulposus with or without radiculopathy; Chronic cervical strains

Size	Cotton	Flannel
Universal	6104-00	6105-00



HCPCS CODE: E0941

### Standard Over-Door Traction Unit

- Unit comes with standard discard flannel head halter
- 12" spreader bar, traction cord and 20 lb. vinyl water bag included
- Fits easily on any door

**Indications:** Degenerative disc disease; Cervical facet syndrome; Herniated nucleus pulposus with or without radiculopathy; Chronic cervical strains

Size	Product #
Universal	7102-22

### Traction Cord

- Inner core constructed of polyester
- Polypropylene outer weave
- ¼" diameter

**Indications:** Traction

<b>Length</b>	<b>Product #</b>
100'	7116-01



### Weight Bag

- Durable vinyl bag
- Graduated marks for weight adjustment

**Indications:** Traction

<b>Size</b>	<b>Product #</b>
20 lb.	7117-02



# Torso/Spine

## Spine Bracing



LSO

HCPCS CODE: L0637 or L0650

### MAXAlign® LSO

Powered by the BOA® Fit System

- Universal brace design accommodates patient waist sizing requirements from 24" – 70"\*  
\*Greater than 60" requires a brace extension panel (sold separately)
- Powered by the BOA® Fit System for powerful and secure compression
- Compressed foam softgoods featuring antimicrobial pad overlay to help enhance breathability and reduce odors during prolonged use
- Removable lateral panels for step down/low-profile design for smaller/more slender patients (LSO & TLSO-S only)

**Indications:** Post-operative lumbar fusion; Laminectomy, Discectomy; Lumbar compression fractures; Degenerative disc disease; Osteoporosis; Chronic Low back pain; Spondylolisthesis; Spondylolysis; Spinal stenosis; Spinal osteoarthritis; Facet syndrome



TLSO-D

HCPCS CODE: L0456 or L0457

### MAXAlign® TLSO-D

Powered by the BOA® Fit System

- All features of the MAXAlign® LSO Spine Brace (except lateral panels) and:
  - Multi-position DLE shoulder strap anchoring for varying shoulder restriction
  - Easy DLE height adjustment accommodates varying patient heights
  - Adjustable chest strap to prevent under arm discomfort and keep shoulder straps in place

**Indications:** Post-operative thoracic/lumbar fusion; Laminectomy; Discectomy; Compression fractures; Degenerative disc disease; Osteoporosis; Single column instability; Facet syndrome



TLSO-S

HCPCS CODE: L0464

### MAXAlign® TLSO-S

Powered by the BOA® Fit System

- All features of the MAXAlign® LSO Spine Brace and:
  - Short brace design for patients that are less than 6' tall (MTS33-15-S)
  - Standard brace design for patients that are over 6' tall (MTS33-15)
  - Sternal Pad height adjustment mechanism can be done with one hand with without tools
  - Shoulder straps can be worn over or under the shoulder for patient comfort
  - Shoulder straps feature quick release buckles for simple donning & doffing
  - Removable posterior thoracic extension (PTE) to accommodate patient height and to step down the brace (LSO)

**Indications:** Post-operative thoracic/lumbar fusion; Laminectomy; Discectomy; Compression fractures; Degenerative disc disease; Osteoporosis; Single column instability; Facet syndrome

Description	Size	Belt Adjustment Length	Product #
LSO	Universal	24" - 59"	MLP30-15
TLSO w/DLE	Universal	24" - 59"	MTD33-15
TLSO w/SPK	Universal	24" - 59"	MTS33-15
TLSO w/Short SPK	Universal	24" - 59"	MTS33-15-S
Extension Panel			MEP70

### Sizing Guide for all ULTRAlign®+ Spine Orthoses

Sizing determined by three circumferential measurements:

1. 1" below tip of breast bone or xyphoid process
2. Around navel or waist
3. Around fullest area of trochanter or hips

Non-Tapered	Xyphoid	Waist	Trochanter
Small	31" - 35"	31" - 35"	31" - 35"
Medium	34" - 38"	32" - 38"	34" - 39"
Large	37" - 41"	35" - 41"	38" - 42"
X-Large	38" - 45"	38" - 45"	38" - 45"
XX-Large	45" - 53"	45" - 53"	45" - 53"
Tapered	Xyphoid	Waist	Trochanter
Small	25" - 31"	25" - 31"	27" - 33"
Medium	28" - 35"	29" - 36"	32" - 38"
Large	32" - 38"	32" - 38"	35" - 41"
X-Large	35" - 42"	36" - 42"	38" - 46"
XX-Large	40" - 46"	39" - 47"	43" - 49"

### ULTRAlign®+ Thoracic Lumbar Sacral Orthosis

Powered by the BOA® Fit System

- Powered by the BOA® Fit System for a powerful and secure closure that is easy for the patient to tighten with the turn of a dial
- Constructed of hook receivable material with soft, breathable liner that provides a cooler, lighter fit
- Dial allows for micro-adjustability and on-the-fly adjustment
- Patented dual closure for adjustability
- DLE (Dorsal Lumbar Extension) or SPK (Sternal Pad Kit) available for maximum control
- Combines anterior, posterior, and lateral plastic inserts for rigid support
- Available in 15° lordosis
- Non-tapered and tapered versions available for best patient fit
- TLSO meets requirements for most T6 to L5 pathologies



HCPCS CODE: L0458 or L0460

**Indications:** Post-operative thoracic/lumbar fusion; Laminectomy; Discectomy; Compression fractures; Degenerative disc disease; Osteoporosis; Single column instability; Facet syndrome

Size	15° Tapered	15° Non-Tapered
Small	UPT4333-15	UPT3333-15
Medium	UPT4433-15	UPT3433-15
Large	UPT4533-15	UPT3533-15
X-Large	UPT4633-15	UPT3633-15
XX-Large	UPT4733-15	UPT3733-15

Description	Product #
Dorsal Lumbar Extension	UDLE
Sternal Pad Kit	USPK
Sternal Pad Kit- Short	USPK-S



SPK



DLE



Low-Profile

HCPCS CODE: L0458 or L0460

## ULTRAlign®+ Thoracic Lumbar Sacral Orthosis

- Constructed of hook receivable material with soft, breathable liner that provides a cooler, lighter fit
- Patented dual dynamic closure system allows infinite adjustability and maximum compression
- Combines heat-moldable plastic inserts (anterior, posterior, lateral) for rigid support
- Available in 15° or 25° lordosis
- Non-tapered and tapered versions available for best patient fit
- DLE (Dorsal Lumbar Extension) or SPK (Sternal Pad Kit) available for maximum control
- Low-profile version for short-waisted patients
- TLSO meets requirements for most T6 to L5 pathologies

**Indications:** Post-operative thoracic/lumbar fusion; Laminectomy; Discectomy; Compression fractures; Degenerative disc disease; Osteoporosis; Single column instability; Facet syndrome

### Non-Tapered

Small  
Medium  
Large  
X-Large  
XX-Large

### 15°

UPT1333-15  
UPT1433-15  
UPT1533-15  
UPT1633-15  
UPT1733-15

### 25°

UPT1333-25  
UPT1433-25  
UPT1533-25  
UPT1633-25  
UPT1733-25

### Tapered

Small  
Medium  
Large  
X-Large  
XX-Large

### 15°

UPT2333-15  
UPT2433-15  
UPT2533-15  
UPT2633-15  
UPT2733-15

### 25°

UPT2333-25  
UPT2433-25  
UPT2533-25  
UPT2633-25  
UPT2733-25

### Low-Profile Tapered

Small  
Medium  
Large  
X-Large  
XX-Large

### 15°

UPLT2333-15  
UPLT2433-15  
UPLT2533-15  
UPLT2633-15  
UPLT2733-15

### 25°

UPLT2333-25  
UPLT2433-25  
UPLT2533-25  
UPLT2633-25  
UPLT2733-25

### Accessories

Dorsal Lumbar Extension  
Sternal Pad Kit  
Sternal Pad Kit- Short  
3½" Extension Panels  
5½" Extension Panels

### Product #

UDLE  
USPK  
USPK-S  
UEP2031  
UEP2051

Refer to Sizing Guide on Page 13



### ULTRAlign®+ Lumbar Sacral Orthosis

Powered by the BOA® Fit System

- Powered by the BOA® Fit System for a powerful and secure closure that is easy for the patient to tighten with the turn of a dial
- Constructed of hook receivable material with soft, breathable liner that provides a cooler, lighter fit
- Dial allows for micro-adjustability and on-the-fly adjustment
- Patented dual closure for adjustability
- Combines anterior, posterior, and lateral plastic inserts for rigid support
- Available in 15° lordosis
- Non-tapered and tapered versions available for best patient fit
- Low-profile version for short-waisted patients
- LSO meets requirements for most L1 to L5 pathologies

**Indications:** Post-operative lumbar fusion; Laminectomy or discectomy; Lumbar compression fractures; Degenerative disc disease; Osteoporosis; Spondylolisthesis; Spondylolysis; Spinal stenosis; Facet syndrome



HCPCS CODE: L0637 or L0650

Size	15° Tapered	15° Non-Tapered	15° Low-Profile Tapered
Small	UPL4330-15	UPL3330-15	UPLP4330-15
Medium	UPL4430-15	UPL3430-15	UPLP4430-15
Large	UPL4530-15	UPL3530-15	UPLP4530-15
X-Large	UPL4630-15	UPL3630-15	UPLP4630-15
XX-Large	UPL4730-15	UPL3730-15	UPLP4730-15

Refer to Sizing Guide on Page 13



HCPCS CODE: L0637 or L0650

## ULTRAlign®+ Lumbar Sacral Orthosis

- Constructed of hook receivable material with soft, breathable liner that provides a cooler, lighter fit
- Patented dual dynamic closure system allows infinite adjustability and maximum compression
- Combines heat-moldable plastic inserts (anterior, posterior, lateral) for rigid support
- Available in 0° (tapered only), 15° or 25° lordosis
- Non-tapered and tapered versions available for best patient fit
- Low-profile versions for short-waisted patients
- LSO meets requirements for most L1 to L5 pathologies

**Indications:** Post-operative lumbar fusion; Laminectomy; Discectomy; Lumbar compression fractures; Degenerative disc disease; Osteoporosis; Spondylolisthesis; Spondylolysis; Spinal stenosis; Facet syndrome

### Non-Tapered

Small  
Medium  
Large  
X-Large  
XX-Large

### 15°

UPL1330-15  
UPL1430-15  
UPL1530-15  
UPL1630-15  
UPL1730-15

### 25°

UPL1330-25  
UPL1430-25  
UPL1530-25  
UPL1630-25  
UPL1730-25

### Tapered

Small  
Medium  
Large  
X-Large  
XX-Large

### 0°

UPL2330-0  
UPL2430-0  
UPL2530-0  
UPL2630-0  
UPL2730-0

### 15°

UPL2330-15  
UPL2430-15  
UPL2530-15  
UPL2630-15  
UPL2730-15

### 25°

UPL2330-25  
UPL2430-25  
UPL2530-25  
UPL2630-25  
UPL2730-25

### Low-Profile Tapered

Small  
Medium  
Large  
X-Large  
XX-Large

### 15°

UPLP2330-15  
UPLP2430-15  
UPLP2530-15  
UPLP2630-15  
UPLP2730-15

### 25°

UPLP2330-25  
UPLP2430-25  
UPLP2530-25  
UPLP2630-25  
UPLP2730-25

### Warrior® Spine

Powered by the BOA® Fit System

- Universal size (24" to 60" waist)
- Offered in three heights to meet patients' needs
- Patented, single pull, bi-lateral sizing adjustment
- Powered by the BOA® Fit System for a powerful and secure closure that is easy for the patient to tighten with the turn of a dial
- Enlarged BOA® dials allow micro-adjustability, on-the-fly compression, and adjustment with fewer turns
- Integrated anterior panels and closure hand strap for easy donning and doffing
- Soft, breathable material to provide a cool, comfortable fit
- Rounded anterior closure to accommodate varying patient anatomies (inferior and superior angulation)
- Hot/cold temperature therapy packs included with each device

**Indications:**

**642:** Post-operative lumbar immobilization; Degenerative disc disease; Spondylolisthesis; Spondylolysis; Spinal stenosis; Postural support; Degenerative disc disease; Spinal blocks

**648:** Post-operative lumbar immobilization; Degenerative disc disease; Spondylolisthesis; Spondylolysis; Spinal stenosis; Lumbar strains and sprains; Mechanical or discogenic disc disease; Postural support; Degenerative disc disease

**650:** Post-operative lumbar fusion; Laminectomy; Discectomy; Lumbar compression fractures; Degenerative disc disease; Osteoporosis; Spondylolisthesis; Spondylolysis; Spinal stenosis; Facet syndrome



159-01 - HCPCS CODE: L0642

159-02 - HCPCS CODE: L0648

159-03 - HCPCS CODE: L0650

Description	Size	Belt Adjustment Length	Product #
Universal	Warrior Spine 642	24" - 60"	159-01
Universal	Warrior Spine 648	24" - 60"	159-02
Universal	Warrior Spine 650	24" - 60"	159-03



HCPCS CODE: L0631 or L0648

## PROlign® EXT Lumbar Sacral Orthosis

Powered by the BOA® Fit System

- Powered by the BOA® Fit System for a powerful and secure closure that is easy for the patient to tighten with the turn of a dial
- Dial allows micro-adjustability and on-the-fly adjustment
- Soft, breathable material provides a cool, comfortable fit
- Patented dual closure for adjustability
- Rigid anterior insert provides support to the intra-abdominal and viscera region helping to unload the spine under gravitational load
- Features posterior plastic insert available in 15° and 25° lordosis

**Indications:** Post-operative lumbar immobilization; Chronic low back pain; Lumbar muscle weakness; Lumbar strains and sprains; Mechanical or discogenic disc disease; Postural support; Degenerative disc disease; IDET procedure; Spinal blocks

Size	Waist Circumference	15°	25°
X-Small	25" - 30"	157-01	158-01
Small	30" - 34"	157-02	158-02
Medium	35" - 40"	157-03	158-03
Large	40" - 46"	157-04	158-04
X-Large	45" - 50"	157-05	158-05
XX-Large	50" - 55"	157-06	158-06



HCPCS CODE: L0631 or L0648

## PROlign® EXT Lumbar Sacral Orthosis

- Soft, breathable material to provide a cool, comfortable fit
- Dual, dynamic closure system provides infinite adjustment and maximum compression
- Rigid anterior insert provides support to the intra-abdominal and viscera region helping to unload the spine under gravitational load
- 25° posterior plastic insert (spot moldable) helps to maintain neutral sagittal alignment while maximizing support of anatomical structures
- Plastic D-rings for ease of application and removal
- Extended posterior panel for coverage from sacrococcygeal junction to the T9 vertebrae

**Indications:** Post-operative lumbar immobilization; Chronic low back pain; Lumbar muscle weakness; Lumbar strains and sprains; Mechanical or discogenic disc disease; Postural support; Degenerative disc disease; IDET procedure; Spinal blocks

Size	Waist Circumference	25°
X-Small	25" - 30"	155-01
Small	30" - 35"	155-02
Medium	35" - 40"	155-03
Large	40" - 45"	155-04
X-Large	45" - 50"	155-05
XX-Large	50" - 55"	155-06
XXX-Large	55" - 60"	155-07
XXXX-Large	60" - 65"	155-08

### PROlign® Lumbar Sacral Orthosis

Powered by the BOA® Fit System

- Powered by the BOA® Fit System for a powerful and secure closure that is easy for the patient to tighten with the turn of a dial
- Dial allows micro-adjustability and on-the-fly adjustment
- Soft, breathable material provides a cool, comfortable fit
- Patented dual closure for adjustability
- Rigid anterior insert provides support to the intra-abdominal and viscera region helping to unload the spine under gravitational load
- Features posterior plastic insert available in 15° lordosis

**Indications:** Post-operative lumbar immobilization; Chronic low back pain; Lumbar muscle weakness; Lumbar strains and sprains; Mechanical or discogenic disc disease; Postural support; Degenerative disc disease; IDET procedure; Spinal blocks

Size	Waist Circumference	15°
X-Small	25" - 30"	13502004
Small	30" - 34"	13502005
Medium	35" - 40"	13502006
Large	40" - 46"	13502007
X-Large	45" - 50"	13502008



HCPCS CODE: L0627 or L0642

### PROlign® Lumbar Orthosis

- Constructed of hook receivable material with soft breathable liner that wicks away moisture to help prevent skin breakdown
- Patented dual dynamic closure system provides instant full range adjustment and maximum compression
- Rigid anterior insert provides support to intra-abdominal and viscera region helping to unload the spine under gravitational load
- Available in 15° and 25° spot moldable posterior plastic inserts
- Plastic D-rings for ease of application and removal

**Indications:** Post-operative lumbar immobilization; Chronic low back pain; Lumbar muscle weakness; Lumbar strains and sprains; Mechanical or discogenic disc disease; Postural support; Degenerative disc disease; IDET procedure; Spinal blocks

Size	Waist Circumference	15°	25°
X-Small	25" - 30"	13501004	13500004
Small	30" - 35"	13501005	13500005
Medium	35" - 40"	13501006	13500006
Large	40" - 45"	13501007	13500007
X-Large	45" - 50"	13501008	13500008
XX-Large	50" - 55"	13501009	13500009



HCPCS CODE: L0627 or L0642



HCPCS CODE: L0642

### Solace® Low Profile Back Brace

- Low-profile, lightweight design
- Soft, breathable material provides cool, comfortable fit increasing patient compliance
- Adjustable pulley style closure system is easy to secure and provides maximum compression
- Anterior and posterior plastic inserts provide control and support
- Plastic D-rings for ease of application and removal

**Indications:** Chronic low back pain; Lumbar muscle weakness; Lumbar sprains and strains; Mechanical or discogenic lumbar pain

Size	Waist Circumference	Product #
Small	26" - 34"	13400005
Medium	32" - 40"	13400006
Large	38" - 46"	13400007
X-Large	44" - 51"	13400008



### Criss-Cross Lumbo Sacral Support

- Durable elastic construction with hook and loop closure
- Contoured waist for maximum comfort
- Two elastic side pulls for optimal compression
- Four adjustable posterior stays for stability and support
- 12" posterior height
- Not made with natural rubber latex

**Indications:** Mild low back pain; Lumbar muscle weakness; Lumbar sprains and strains; Mechanical or discogenic thoracolumbar pain

Size	Waist Circumference	Product #
Universal	26" - 46"	13850000
Small	24" - 28"	13850005
Small/Medium	28" - 32"	13850056
Medium/Large	32" - 36"	13850067
Large	36" - 40"	13850007
X-Large	40" - 44"	13850008
XX-Large	44" - 48"	13850009
XXX-Large	48" - 52"	13850010
XXXX-Large	52" - 56"	13850011

### Elastic Lumbo Sacral Support

- Constructed of durable elastic with hook and loop closure
- Two elastic side pulls allow optimal compression
- Six flexible posterior stays for stability and support
- 10" posterior height
- Not made with natural rubber latex

**Indications:** Mild low back pain; Lumbar muscle weakness; Lumbar sprains and strains; Mechanical or discogenic thoracolumbar pain

Size	Waist Circumference	Product #
Universal	26" - 46"	13810000



### Elastic/Neoprene Back Support

- Constructed of black elastic material
- Contoured shape for increased comfort in seated position
- Two dynamic side pulls for optimal compression
- Neoprene posterior pocket accommodates moldable thermoplastic insert (sold separately)
- 9" posterior height
- Not made with natural rubber latex

**Indications:** Mild to moderate low back pain; Lumbar muscle weakness; Lumbar sprains and strains; Lumbar instability

Size	Waist Circumference	Product #
Small	26" - 30"	NE7741-12
Medium	30" - 34"	NE7741-13
Large	34" - 38"	NE7741-14
X-Large	38" - 42"	NE7741-15
XX-Large	42" - 46"	NE7741-16
XXX-Large	46" - 50"	NE7741-17
Moldable Insert		13860900





### Workers Back Support

- Constructed of high strength, breathable nylon material
- Five self-contouring stays
- Rubber lining on stay pockets help prevent migration
- 1½" suspension straps adjust easily and lay flat
- Hook and loop closure with vinyl covered side pulls for maximum support
- 9½" posterior height

**Indications:** Mild low back pain; Lumbar muscle weakness; Lumbar sprains and strains

Size	Waist Circumference	Product #
X-Small	28" - 32"	BS1000-10
Small	32" - 36"	BS1000-12
Medium	36" - 40"	BS1000-14
Large	40" - 44"	BS1000-16
X-Large	44" - 48"	BS1000-18
XX-Large	48" - 52"	BS1000-20



### S-I Support Belt

- Constructed of non-slip neoprene material to provide compression and allow stretch for movement
- Inner adjustable pads can be customized to provide anterior and posterior support to S-I joint
- Provides stability to S-I joint reducing strain on the S-I ligaments
- Low-profile, thin material allows belt to be worn comfortably under clothes
- Simple hook closure eliminates need for bulky buckles

**Indications:** Sacroiliac pain; Sacroiliac joint instability; Sacroiliac ligament strains

Size	Length	Product #
Small/Medium	42"	13480056
Large/X-Large	54"	13480078



### Premium 8" Rib Belt

- Constructed of knit elastic with soft inner liner
- Three-panel design with unique stitching prevents material from rolling
- Hook and loop closure for ease of application
- Male and female (contoured) styles for best fit
- Available in universal and sized options
- Not made with natural rubber latex

**Indications:** Fractured or bruised ribs; Intercostal strains; Costovertebral sprains

Size	Dimensions	Male	Female
Universal	8" x 38"	13760300	13760400
Medium	8" x 31"	13760306	13760406
Large	8" x 36"	13760307	13760407
X-Large	8" x 43"	13760308	13760408



### Premium 6" Rib Belt

- Constructed of knit elastic with soft inner liner
- Two-panel design with unique stitching prevents material from rolling
- Hook and loop closure for ease of application
- Male and female (contoured) styles for best fit
- Available in universal and sized options
- Not made with natural rubber latex

**Indications:** Fractured or bruised ribs; Intercostal strains; Costovertebral sprains

Size	Dimensions	Male	Female
Universal	6" x 40"	13780300	13780400
Small	6" x 26"	13790305	13790405
Medium	6" x 31"	13790306	13790406
Large	6" x 36"	13790307	13790407
X-Large	6" x 43"	13790308	13790408
XX-Large	6" x 50"	13790309	13790409



### Universal 6" Rib Belt

- Constructed of knit elastic
- Solid panel design
- Hook and loop closure for ease of application
- Available in universal, gender specific styles for best fit
- Not made with natural rubber latex

**Indications:** Fractured or bruised ribs; Intercostal strains; Costovertebral sprains

Size	Dimensions	Qty	Male	Female
Universal	6" x 40"	12/Case	13740300	13740400





### Premium Sized Abdominal Binder

- Constructed of knit elastic with soft lining for extended wear and comfort
- Three (9") or four (12") individual panel design for best patient fit
- Unique stitching prevents individual panels from rolling
- Hook and loop closure
- Not made with natural rubber latex

**Indications:** Abdominal muscle strain; Soreness in abdominal region; Post-abdominal surgery

Size	Measurement*	9"	12"
Small/Medium	30" - 45"	13991000	13981000
Medium/Large	46" - 62"	13992000	13982000
Large	63" - 74"	13993000	13983000
X-Large	75" - 84"	13994000	13984000
XX-Large	85" - 94"	13995000	13985000

\*Measure circumference of male waist or female hips



### Premium Universal Abdominal Binder

- Constructed of knit elastic
- Choose between three (9") or four (12") individual or solid (10") panel design
- Unique stitching design prevents individual panels from rolling
- Hook and loop closure
- Universal sizing reduces inventory needs
- Available in five panel (15") ilio bypass version
- Not made with natural rubber latex

**Indications:** Abdominal muscle strain; Soreness in abdominal region; Post-abdominal surgery

Size	Measurement*	9"	10"	12"	15"
Universal	27" - 48"	13970000	13950000	13960000	—
X-Long	up to 54"	—	—	—	13871000
XX-long	up to 70"	—	—	—	13872900

\*Measure circumference of male waist or female hips

### Sized Abdominal Binder

- Three (9") or four (12") panel design
- Hook and loop closure
- Not made with natural rubber latex

**Indications:** Abdominal muscle strain; Soreness in abdominal region; Post-abdominal surgery

Size	Measurement*	9"	12"
Small/Medium	30" - 45"	13661056	13651056
Medium/Large	46" - 62"	13662067	13652067
Large	63" - 74"	13663008	13653008
X-Large	75" - 84"	13664009	13654009
XX-Large	85" - 94"	13665010	13655010

\*Measure circumference of male waist or female hips



### Universal Abdominal Binder

- Choose between three (9") or four (12") individual or solid (10") panel design
- Hook and loop closure
- Universal sizing reduces inventory needs
- Not made with natural rubber latex

**Indications:** Abdominal muscle strain; Soreness in abdominal region; Post-abdominal surgery

Size	Measurement*	9"	10"	12"
Universal	27" - 48"	13660000	13640000	13650000
X-Long	up to 54"	—	13600000	—
XX-Long	up to 70"	—	13590000	13630000

\*Measure circumference of male waist or female hips



### Economy Abdominal Binder

- Choose between three (9") or four (12") individual or solid (10") panel design
- Hook and loop closure
- Universal sizing reduces inventory needs
- Not made with natural rubber latex

**Indications:** Abdominal muscle strain; Soreness in abdominal region; Post-abdominal surgery

Size	Measurement*	9"	10"	12"
Universal	27" - 48"	—	A133000	—
Small/Medium	30" - 45"	A131056	—	A132056
Medium/Large	46" - 62"	A131067	—	A132067

\*Measure circumference of male waist or female hips



# Shoulder/Clavicle

## Clavicle Straps



HCPCS CODE: L3650

### Premium Clavicle Strap

- Synthetic stockinette over foam padding does not absorb water and can be worn while bathing
- Serpentine stitch design to prevent migration

**Indications:** Clavicle fractures; Grade II and III acromioclavicular separations; Osteolysis of the clavicle; AC degenerative joint pain; Mechanical cervical disease; Postural dysfunction; Sternoclavicular dislocations

Size	Buckle Closure
Child	3001-02
Small	3001-06
Medium	3001-03
Large	3001-04
X-Large	3001-05



HCPCS CODE: L3650

### Heavy-Duty Clavicle Strap

- Constructed of foam padding with stockinette covering
- Extra long straps for easy adjustment
- Available in buckle or hook and loop closure

**Indications:** Clavicle fractures; Grade II and III acromioclavicular separations; Osteolysis of the clavicle; AC degenerative joint pain; Mechanical cervical disease; Postural dysfunction; Sternoclavicular dislocations

Size	Buckle Closure	Hook & Loop Closure
Infant	—	3004-11
Child	3004-02	3004-12
Small	3004-06	3004-16
Medium	3004-03	3004-13
Large	3004-04	3004-14



HCPCS CODE: L3650

### 3-Way Clavicle Strap

- Foam construction with cotton stockinette cover
- 3-way posterior vector helps prevent migration

**Indications:** Clavicle fractures; Grade II and III acromioclavicular separations; Osteolysis of the clavicle; AC degenerative joint pain; Mechanical cervical disease; Postural dysfunction; Sternoclavicular dislocations

Size	Buckle Closure
Child	3015-01
Small	3015-02
Medium	3015-03
Large	3015-04
X-Large	3015-05

### Deluxe Sling & Swathe

- Lightweight perforated foam material provides patient comfort
- Adjustable shoulder straps attach to hook receivable sling to ensure accurate fit
- Open or closed elbow designs
- Swathe attaches at any point on sling
- Available in pediatric and extra long versions
- Universal right/left

**Indications:** S/P glenohumeral acromioplasty; Surgical repairs of the rotator cuff; Anterior glenohumeral capsular reconstruction; Anterior dislocation of the G-H joint

Size	Swathe Size	Pouch Size	Product #
Universal	5" x 54"	13" x 19"	9006-00
Universal w/ X-Long Swathe	5" x 62"	13" x 19"	9006-50
Universal Enclosed Elbow	5" x 54"	17" x 19"	9014-00
Universal Pediatric	4½" x 44"	9" x 16½"	9007-00



HCPCS CODE: L3660

### Foam Sling & Swathe

- Constructed of perforated foam material
- Adjustable shoulder straps attach to hook receivable sling to ensure accurate fit
- Swathe attaches at any point on sling
- Available in universal and sized options
- Universal right/left

**Indications:** S/P glenohumeral acromioplasty; Surgical repairs of the rotator cuff; Anterior glenohumeral capsular reconstruction; Anterior dislocation of the G-H joint

Size	Swathe Size	Pouch Size	Product #
Universal	5" x 54"	13" x 19"	TX4442-00
Small	5" x 46"	10" x 16½"	TX4442-02
Medium	5" x 48"	11" x 18½"	TX4442-03
Large	5" x 51"	12" x 19"	TX4442-04



HCPCS CODE: L3660

# Shoulder/Clavicle

## Sling & Swathes



HCPCS CODE: L3660

### Universal Foam Sling & Swathe

- Constructed of perforated foam material for patient comfort
- Adjustable shoulder straps attach to hook receivable sling to ensure accurate fit
- Swathe attaches at any point on sling
- Extra-long swathe size available
- Universal right/left

**Indications:** S/P glenohumeral acromioplasty; Surgical repairs of the rotator cuff; Anterior glenohumeral capsular reconstruction; Anterior dislocation of the G-H joint

Size	Swathe Size	Pouch Size	Product #
Universal	5" x 54"	13" x 19"	4442-00
Universal w/ X-Long Swathe	5" x 62"	13" x 19"	4442-10



HCPCS CODE: L3660

### Foam Sling & Swathe

- Lightweight perforated foam material provides patient comfort
- Adjustable shoulder straps attach to hook receivable sling to ensure accurate fit
- Swathe attaches at any point on sling
- Available in universal and sized options
- Universal right/left

**Indications:** S/P glenohumeral acromioplasty; Surgical repairs of the rotator cuff; Anterior glenohumeral capsular reconstruction; Anterior dislocation of the G-H joint

Size	Swathe Size	Pouch Size	Product #
Universal	5" x 54"	13" x 19"	9013-00
Small	5" x 46"	10" x 16½"	9013-02
Medium	5" x 48"	11" x 18½"	9013-03
Large	5" x 51"	12" x 19"	9013-04

### Shoulder Immobilizer w/ Canvas Swathe

- Sling with attached swathe constructed of navy canvas material
- Shoulder strap includes O-ring/hook and loop closure
- Shoulder pad for added comfort
- Thumb loop helps prevent wrist drop
- Universal right/left

**Indications:** S/P glenohumeral acromioplasty; Surgical repairs of the rotator cuff; Anterior glenohumeral capsular reconstruction; Anterior dislocation of the G-H joint

Size	Pouch Size	Product #
Small	7" x 13½"	9001-02
Medium	8" x 16½"	9001-03
Large	9" x 19½"	9001-04
X-Large	9" x 22½"	9001-05



HCPCS CODE: L3660

### Canvas Shoulder Immobilizer w/ Waist Strap

- Constructed of navy canvas sling with web shoulder and waist straps
- Shoulder strap includes O-ring/hook and loop closure
- Adjustable buckle on waist strap
- Thumb loop helps prevent wrist drop
- Universal right/left

**Indications:** S/P glenohumeral acromioplasty; Surgical repairs of the rotator cuff; Anterior glenohumeral capsular reconstruction; Anterior dislocation of the G-H joint

Size	Pouch Size	Product #
X-Small	6" x 12½"	9002-01
Small	7" x 13½"	9002-02
Medium	8" x 16½"	9002-03
Large	9" x 19½"	9002-04
X-Large	9" x 22½"	9002-05



HCPCS CODE: L3660

# Shoulder/Clavicle

## Shoulder Immobilizers with Waist Strap



HCPCS CODE: L3660

### Muslin Shoulder Immobilizer w/ Waist Strap

- Constructed of lightweight muslin sling with web shoulder and waist straps
- Adjustable buckle closures
- Closed pouch design
- Thumb loop helps prevent wrist drop
- Universal right/left

**Indications:** S/P glenohumeral acromioplasty; Surgical repairs of the rotator cuff; Anterior glenohumeral capsular reconstruction; Anterior dislocation of the G-H joint

Size	Pouch Size	Product #
Small	7" x 13½"	9003-02
Medium	8" x 16½"	9003-03
Large	9" x 19½"	9003-04
X-Large	9" x 22½"	9003-05



HCPCS CODE: L3660

### Shoulder Immobilizer w/ Foam Straps

- Constructed of canvas or lightweight poly material with foam shoulder and waist straps
- Adjustable straps feature O-ring/hook and loop closure
- Thumb loop helps prevent wrist drop
- Universal right/left

**Indications:** S/P glenohumeral acromioplasty; Surgical repairs of the rotator cuff; Anterior glenohumeral capsular reconstruction; Anterior dislocation of the G-H joint

Size	Pouch Size	Canvas	Poly
X-Small	6" x 12½"	9023-00	TX9023-00
Small	7" x 13½"	9023-01	TX9023-01
Medium	8" x 16½"	9023-02	TX9023-02
Large	9" x 19½"	9023-03	TX9023-03
X-Large	9" x 22½"	9023-04	TX9023-04



### Universal Foam Shoulder Immobilizer

- Contoured perforated foam construction ensures patient comfort
- Wrist cuff, humeral cuff and shoulder strap are adjustable and can be placed anywhere on belt to achieve desired fit
- Provides shoulder and upper arm immobilization following dislocation or post-surgical application
- Universal right/left

**Indications:** S/P glenohumeral acromioplasty; Surgical repairs of the rotator cuff; Anterior glenohumeral capsular reconstruction; Anterior dislocation of the G-H joint

Size	Belt Size	Wrist Cuff Size	Product #
Universal	7½" x 48"	5" x 12"	9009-00
Universal	8" x 54"	3" x 9"	9009-50



HCPCS CODE: L3660

### Universal Sling Style Shoulder Immobilizer

- Perforated foam construction ensures patient comfort
- Sling style wrist cuff for optimal comfort and support
- Wrist cuff, humeral cuff and padded shoulder strap are adjustable and can be placed anywhere on belt to achieve desired fit
- Provides shoulder and upper arm immobilization following dislocation or post-surgical application
- Universal right/left

**Indications:** S/P glenohumeral acromioplasty; Surgical repairs of the rotator cuff; Anterior glenohumeral capsular reconstruction; Anterior dislocation of the G-H joint

Size	Belt Size	Wrist Cuff Size	Product #
Adult	5" x 51"	5½" x 15"	9012-00
Child	4¾" x 34½"	2" x 9¾"	9011-00



HCPCS CODE: L3660

# Shoulder/Clavicle

## Elastic Shoulder Immobilizers



### Velpeau Shoulder Immobilizer

- Constructed of heavy duty elastic material
- Durable foam padded wrist and humeral cuffs
- Contoured design with hook and loop closure for patient comfort
- Universal right/left

**Indications:** S/P glenohumeral acromioplasty; Surgical repairs of the rotator cuff; Anterior glenohumeral capsular reconstruction; Anterior dislocation of the G-H joint

Size	Belt Size	Product #
X-Small	6" x 29"	9008-00
Small	6" x 32"	9008-01
Medium	6" x 35"	9008-02
Large	6" x 38"	9008-03
X-Large	6" x 41"	9008-04
XX-Large	6" x 44"	9008-05
XXX-Large	6" x 47"	9008-06



### Elastic Shoulder Immobilizer

- Constructed of lightweight elastic material
- Foam wrist and humeral cuffs
- Low-profile design is contoured for patient comfort
- Hook and loop closure
- Universal right/left

**Indications:** S/P glenohumeral acromioplasty; Surgical repairs of the rotator cuff; Anterior glenohumeral capsular reconstruction; Anterior dislocation of the G-H joint

Size	Belt Size	Product #
Small	6" x 32"	1010159
Medium	6" x 35"	1020159
Large	6" x 38"	1030159
X-Large	6" x 41"	1040159
XX-Large	6" x 44"	1050159

### Warrior® Wing Shoulder Abduction

- Universal design allows sling length to be adjusted to fit most patients
- Aluminum waist frame is easily formed for accurate positioning & comfort
- Airplane hinge can be adjusted for optimal abduction for post-op recovery
- Allows positioning for abduction and internal or external rotation
- Includes three triangle pads for increased abduction (90°, 45°, 30°, 15°)
- Simple design makes it easy for self application
- Exercise ball packaged with product

**Indications:** For non-surgical or post-op shoulder conditions that require diagnosis-specific arm positioning; Rotator cuff repairs; Bankart repairs; SLAP lesions; Glenohumeral dislocations/subluxation; Posterior/anterior capsular reconstruction; Shoulder instabilities; Muscle and tendon repair; Joint reconstruction

Size	Description	Product #
Universal	Left	11631000
Universal	Right	11632000



HCPCS CODE: L3960

### Shoulder P.A.D. III

- Unique design allows sling length to be adjusted to fit most patients
- Constructed of hook receivable material for adjustability
- Soft, breathable liner helps wick away moisture
- Foam block provides 35° of abduction
- Shoulder and waist straps can be trimmed to desired length
- Quick-release buckles on shoulder and waist straps for ease of donning and doffing
- Adjustable thumb loop to help prevent wrist drop
- Arm can be positioned anteriorly or posteriorly depending on post-operative requirements
- Exercise ball packaged with product
- Universal right/left and size

**Indications:** Surgical rotator cuff repairs; Anterior glenohumeral capsular reconstruction; Dislocation/subluxation of G-H joint; S/P glenohumeral acromioplasty; Bankart repairs; Soft tissue repairs; Shoulder sprains and strains

Size	Product #
Universal	11620000



HCPCS CODE: L3670

# Shoulder/Clavicle

## Shoulder Abduction



### Shoulder P.A.D. II

- Constructed of hook receivable material for adjustability
- Soft, breathable liner wicks away moisture
- Foam block provides 35° of abduction
- Shoulder and waist straps can be trimmed to desired length
- Adjustable for open or closed pouch design
- Quick-release buckle on waist strap for ease of application and removal
- Adjustable thumb loop to help prevent wrist drop
- Arm can be positioned anteriorly or posteriorly depending on post-operative requirements
- Exercise ball packaged with product
- Universal right/left

**Indications:** Surgical rotator cuff repairs; Anterior glenohumeral capsular reconstruction; Dislocation/subluxation of G-H joint; S/P glenohumeral acromioplasty; Bankart repairs; Soft tissue repairs; Shoulder sprains and strains

Size	Pouch Size	Product #
Small	7" x 16"	11630005
Medium	7" x 17"	11630006
Large	7" x 18"	11630007
X-Large	7" x 19"	11630008

HCPCS CODE: L3670

### Shoulder P.A.D.



- Constructed of lightweight canvas material
- Foam block provides 35° of abduction
- Shoulder and waist straps can be trimmed to desired length
- Thumb loop helps prevent wrist drop
- Allows arm to be placed in an optimal neutral position for effective healing
- Exercise ball packaged with product
- Universal right/left

**Indications:** Surgical rotator cuff repairs; Anterior glenohumeral capsular reconstruction; Dislocation/subluxation of G-H joint; S/P glenohumeral acromioplasty; Bankart repairs; Soft tissue repairs; Shoulder sprains and strains

Size	Pouch Size	Product #
Small	5½" x 14"	11640005
Medium	6½" x 17"	11640006
Large	7" x 19"	11640007
X-Large	7½" x 20½"	11640008

HCPCS CODE: L3670

### Shoulder Abduction Positioner

- Constructed of hook receivable foam material for adjustability
- Foam block provides 55° of abduction
- Adjustable wrist and humeral cuffs for proper positioning
- Foam shoulder pad provides additional patient comfort
- Designed for abduction and immobilization of the shoulder
- Universal right/left

**Indications:** Acute shoulder instability; Surgical rotator cuff repair; Anterior glenohumeral capsular reconstruction; Acute rotator cuff tendinopathy; Dislocation/subluxation of G-H joint; Acromioclavicular joint dislocations; S/P glenohumeral acromioplasty; Bankart repairs; Soft tissue repairs; Shoulder sprains and strains

Size	Pillow Dimensions	Product #
Small	25¼" x 23¾"	11650005
Medium	29½" x 26¾"	11650006
Large	30½" x 36"	11650007



HCPCS CODE: L3670



HCPCS CODE: A4565

### Premium Arm Sling

- Deep pocket pouch design constructed of black cotton material
- Infant and child sizes feature cartoon print
- Foam shoulder pad provides additional patient comfort
- Thumb loop helps prevent wrist drop
- Adjustable slide buckle on strap for best fit
- Hook and loop closure with O-rings

**Indications:** Cast support; Injuries to the arm, wrist or hand; Acromioclavicular sprains; Anterior glenohumeral dislocations

Size	Pouch Size	Strap Length	Product #
Infant	5" x 9"	1" x 21"	11690001
Child	6" x 11"	1" x 27"	11690002
Small	7" x 13"	1" x 34"	11690005
Medium	8" x 17"	1" x 37"	11690006
Large	9" x 20"	1" x 42"	11690007
X-Large	9" x 23"	1" x 45"	11690008



HCPCS CODE: A4565

### Specialty Arm Sling

- Durable navy canvas construction with deep pocket design
- Infant and child sizes feature cartoon print
- Choice of foam or vinyl shoulder pad for patient comfort
- Thumb loop helps prevent wrist drop
- Adjustable slide buckle on strap for best fit
- Hook and loop closure with O-rings

**Indications:** Cast support; Injuries to the arm, wrist or hand; Acromioclavicular sprains; Anterior glenohumeral dislocations

Size	Pouch Size	Strap Length	Foam Pad	Vinyl Pad
Infant	5" x 9"	1" x 21"	8004-01	8004-11
Child	6" x 11"	1" x 27"	8004-02	8004-12
Small	7" x 13"	2" x 34"	8004-03	8004-13
Medium	8" x 17"	2" x 37"	8004-04	8004-14
Large	9" x 20"	2" x 37"	8004-05	8004-15
X-Large	9" x 23"	2" x 42"	8004-06	8004-16

### Envelope Arm Sling

- Constructed of lightweight navy canvas material
- Deep pocket pouch design
- Foam shoulder pad for added comfort
- Thumb loop helps prevent wrist drop
- Buckle closure

**Indications:** Cast support; Injuries to the arm, wrist or hand; Acromioclavicular sprains; Anterior glenohumeral dislocations

Size	Pouch Size	Strap Length	Product #
Child	6" x 11"	1" x 27"	8001-01
Small	7" x 13"	1" x 34"	8001-02
Medium	8" x 17"	1" x 37"	8001-03
Large	9" x 20"	1" x 42"	8001-04
X-Large	9" x 23"	1" x 45"	8001-05



HCPCS CODE: A4565

### Light Blue Arm Sling

- Constructed of light blue cotton material with deep pocket design
- Foam shoulder pad provides additional comfort
- Thumb loop helps prevent wrist drop
- Hook and loop closure

**Indications:** Cast support; Injuries to the arm, wrist or hand; Acromioclavicular sprains; Anterior glenohumeral dislocations

Size	Pouch Size	Strap Length	Product #
Infant	5" x 9"	1" x 21"	10101
Child	6" x 11"	1" x 27"	10102
Small	7" x 13"	2" x 34"	10103
Medium	8" x 17"	2" x 37"	10104
Large	9" x 20"	2" x 37"	10105
X-Large	9" x 23"	2" x 42"	10106



HCPCS CODE: A4565

### Narrow Pouch Arm Sling

- Lightweight cotton material with narrow, closed pouch design
- Buckle closure
- Available in each or 12/Case quantity

**Indications:** Cast support; Injuries to the arm, wrist or hand; Acromioclavicular sprains; Anterior glenohumeral dislocations

Size	Pouch Size	Strap Length	Each	Case
Child	5" x 10"	1" x 28"	—	8017-00
Small	5" x 13"	1" x 34"	8017-51	8017-01
Medium	6" x 15"	1" x 38"	8017-52	8017-02
Large	6" x 18"	1" x 42"	8017-53	8017-03
X-Large	7" x 20"	1" x 46"	8017-54	8017-04



HCPCS CODE: A4565



HCPCS CODE: A4565

### Deep Pocket Arm Sling

- Deep pocket, open pouch design constructed of breathable poly material
- Foam shoulder pad provides additional comfort
- Thumb loop helps prevent wrist drop
- Hook and loop closure with O-rings and slide buckle adjustment
- Available in each or 100/Case quantity

**Indications:** Cast support; Injuries to the arm, wrist or hand; Acromioclavicular sprains; Anterior glenohumeral dislocations

Size	Pouch Size	Strap Length	Each	Case
Infant	5" x 9"	1" x 21"	TX9902-01	—
Child	6" x 11"	1" x 27"	TX9902-02	TX9902-02/100
Small	7" x 13"	2" x 37"	TX9902-03	TX9902-03/100
Medium	8" x 17"	2" x 37"	TX9902-04	TX9902-04/100
Large	9" x 20"	2" x 37"	TX9902-05	TX9902-05/100
X-Large	9" x 22"	2" x 42"	TX9902-06	TX9902-06/100



HCPCS CODE: A4565

### Arm Sling w/ Foam Strap

- Constructed of canvas or lightweight poly material
- Deep pocket, closed pouch design
- Foam shoulder strap provides maximum comfort
- Hook closure fastens anywhere on foam strap for superior adjustment

**Indications:** Cast support; Injuries to the arm, wrist or hand; Acromioclavicular sprains; Anterior glenohumeral dislocations

Size	Pouch Size	Strap Length	Canvas	Poly
Small	7" x 13"	2" x 37"	8023-01	TX8023-21
Medium	8" x 17"	2" x 37"	8023-02	TX8023-22
Large	9" x 20"	2" x 37"	8023-03	TX8023-23
X-Large	9" x 22"	2" x 40"	8023-04	TX8023-24
XX-Large	10" x 23"	2" x 40"	8023-05	—



### Universal Arm Sling

- Constructed of heavy-duty canvas material or lightweight poly material
- Features easy fold-back universal design
- Foam shoulder pad provides additional comfort (canvas version)
- Poly version features foam shoulder strap
- Hook and loop closure with O-rings

**Indications:** Cast support; Injuries to the arm, wrist or hand; Acromioclavicular sprains; Anterior glenohumeral dislocations



HCPCS CODE: A4565

Size	Pouch Size	Strap Length	Canvas	Poly
Adult	8" x 19"	2" x 37"	8020-00	TX8020-00
Child	5" x 9"	1" x 31"	8020-01	—

### CVA Sling

- Constructed of durable canvas material
- Tubular foam neck pad for patient comfort
- Strap features adjustable slide buckle closure

**Indications:** Stroke or paralysis affecting arm or shoulder



Size	Pouch Size	Strap Length	Product #
Small/Medium	5½" x 7½"	2" x 30"	6157D02
Medium/Large	5½" x 7½"	2" x 38½"	6157D03

### Perforated Arm Elevator/Sling

- Constructed of hook receivable perforated foam
- Converts easily to sling with shoulder pad included
- Can be trimmed for best patient fit
- Hook and loop closures for easy application

**Indications:** Post upper extremity surgery; Upper extremity edema

Size	Pouch Size	Product #
Universal	20" x 20½"	8788-50

### Convolute Foam Arm Elevator/Sling

- Constructed of convoluted foam inner with hook receivable outer lining
- Converts easily to sling with shoulder pad included
- Slide buckle for adjustment of shoulder strap
- Hook and loop closures for easy application

**Indications:** Post upper extremity surgery; Upper extremity edema

Size	Pouch Size	Product #
Universal	10" x 16"	8788-03

### Arm Elevator/Sling w/ Ice Pockets

- Constructed of cotton material
- Converts easily to sling
- Hook and loop closures for easy application

**Indications:** Post upper extremity surgery; Upper extremity edema

Size	Description	Pouch Size	Product #
Universal	w/ Pocket	12" x 17"	8029-01
Universal	w/o Pocket	12" x 17"	8029-00



### Warrior® Post-Operative Elbow Brace

- Single hinge lateral application for easy donning and doffing
- Hinge is easily adjusted in 10° increments (Flexion: 0° to 120°, Extension: 0° to 90°)
- Length can be adjusted from 16" to 24"
- Shoulder strap included for extra support and immobilization
- Universal size, left/right specific

**Indications:** Post-operative rehabilitation; Olecranon fractures; Radial head fractures; Hairline fracture of the radius, humerus and ulna; Ligamentous reconstruction procedures of the elbow

Size	Description	Product #
Universal	Left	EB6000-01
Universal	Right	EB6000-02



HCPCS CODE: L3760 or L3761

### Hypercontrol® Elbow

- Constructed of breathable Tri-tex™ material with four-way stretch
- Medial and lateral hinges control hyperextension of the elbow
- Criss-cross straps assist in controlling hyperextension
- Elbow pad protects bony prominence
- Proximal and distal straps provide secure fit and help prevent migration

**Indications:** Medial/lateral ligament instabilities; Hyperextension of the elbow; UCL sprains; Valgus Extension Overload (VEO); Joint capsular sprains

Size	Forearm Circumference*	Product #
X-Small	8" - 9"	12850004
Small	9" - 10"	12850005
Medium	10" - 11"	12850006
Large	11" - 12"	12850007
X-Large	12" - 13"	12850008
XX-Large	13" - 14"	12850009



HCPCS CODE: L3710

\*Measure largest circumference of forearm



### Premium Tennis Elbow Support

- Made of lightweight, ventilated material
- Support is low-profile, increasing patient compliance
- Inner pad can be strategically placed for maximum pain relief
- D-ring closure for easy application
- Universal size fits most patients

**Indications:** Medial and lateral epicondylitis

Size	Measurement	Product #
Universal	2" x 16"	12870000



### Universal Neoprene Tennis Elbow Support

- 1/8" neoprene construction provides compression, warmth and support
- Adjustable felt buttress can be placed just below the epicondyle for pain relief
- Loop lock contact closure for adjustable compression and application
- Universal size fits most patients

**Indications:** Medial and lateral epicondylitis

Size	Measurement	Product #
Universal	3" x 16"	NE7730-70



### Universal Tennis Elbow Support

- Perforated foam material is breathable for patient comfort
- Counterforce strap with loop lock contact closure for adjustable compression
- Universal size fits most patients

**Indications:** Medial and lateral epicondylitis

Size	Measurement	Product #
Universal	3" x 13"	6005-00

### Neoprene Tennis Elbow Support w/ Pad

- 1/8" neoprene construction provides compression, warmth and support
- Incorporates 1/4" pad to alleviate stress over the lateral or medial epicondyle
- Elastic counterforce strap and loop lock contact closure allow for maximum compression
- Sized to ensure a precise fit

**Indications:** Medial and lateral epicondylitis

Size	Forearm Circumference	Product #
Small	9" - 10"	NE7731-72
Medium	10" - 11"	NE7731-73
Large	11" - 12"	NE7731-74
X-Large	12" - 14"	NE7731-75



### Sized Tennis Elbow Support

- Constructed of surgical webbing with foam lining
- Counterforce strap with loop lock contact closure for adjustable compression
- Sized to ensure a precise fit

**Indications:** Medial and lateral epicondylitis

Size	Measurement	Product #
Small	3" x 9"	6004-01
Medium	3" x 10"	6004-02
Large	3" x 11"	6004-03
X-Large	3" x 12"	6004-04



### Neoprene Elbow Sleeve

- 1/8" neoprene construction provides compression, warmth and support
- Anatomically contours to the elbow
- Available with or without elbow strap

**Indications:** Tendonitis; Osteoarthritis; Arthritis; Olecranon bursitis; (Medial and lateral epicondylitis w/ strap)

Size	Forearm Circumference	w/o Strap	w/ Strap
Small	9" - 10"	NE7727-72	NE7728-72
Medium	10" - 11"	NE7727-73	NE7728-73
Large	11" - 12"	NE7727-74	NE7728-74
X-Large	12" - 14"	NE7727-75	NE7728-75
XX-Large	14" - 16"	NE7727-76	NE7728-76





## Elastic Elbow Support

- Pull-on cotton elastic design
- Provides snug fit to achieve maximum comfort and compression

**Indications:** Minor elbow sprains and strains; Edema; Osteoarthritis; Olecranon bursitis

Size	Forearm Circumference	Product #
Small	7" – 10"	6003-01
Medium	10" – 13"	6003-02
Large	13" – 15"	6003-03
X-Large	15" – 17"	6003-04

### Suede Leatherette Wrist & Wrist/Forearm Splint

- Suede leatherette material reduces migration
- Unique wedge contour design ensures an intimate fit increasing patient comfort
- Extra-wide loop lock strap at wrist for compression and support
- Removable/malleable palmar and dorsal stays
- Does not extend past the distal palmar crease allowing full finger range of motion

**Indications:** Carpal tunnel syndrome; Sprains and strains of the wrist; Post-operative immobilization and rehabilitation; Stable fractures of the distal radius and carpal joints



HCPCS CODE: L3908 or L3984

Size	Length	Wrist		Length	Wrist/Forearm	
		Right	Left		Right	Left
Pediatric	—	—	—	6"	12991202	12991102
Child	—	—	—	9"	12992202	12992102
Small	8"	12982205	12982105	11"	12993205	12993105
Medium	8"	12982206	12982106	11"	12993206	12993106
Large	8"	12982207	12982107	11"	12993207	12993107
X-Large	8"	12982208	12982108	11"	12993208	12993108

### Canvas Wrist & Wrist/Forearm Splint

- Constructed of sturdy blue canvas material with foam tricot lining
- Unique wedge contour design ensures an intimate fit increasing patient comfort
- Extra-wide loop lock strap at wrist for compression and support
- Removable/malleable palmar and dorsal stays
- Does not extend past the distal palmar crease allowing full finger range of motion

**Indications:** Carpal tunnel syndrome; Sprains and strains of the wrist; Post-operative immobilization and rehabilitation; Stable fractures of the distal radius and carpal joints



HCPCS CODE: L3908 or L3984

Size	Length	Wrist		Length	Wrist/Forearm	
		Right	Left		Right	Left
Pediatric	4"	1010115	1060115	6"	1010025	1060025
Small	8"	1020115	1070115	11"	1020025	1070025
Medium	8"	1030115	1080115	11"	1030025	1080025
Large	8"	1040115	1090115	11"	1040025	1090025
X-Large	8"	1050115	1100115	11"	1050025	1100025

# Wrist, Hand, and Forearm

## Wrist & Wrist/Forearm



HCPCS CODE: L3908 or L3984

### Leatherette Wrist/Forearm Splint

- Constructed of durable leatherette material with foam tricot lining
- Unique wedge contour design ensures an intimate fit increasing patient comfort
- Extra-wide loop lock strap at wrist for compression and support
- Removable/malleable palmar and dorsal stays
- Does not extend past the distal palmar crease allowing full finger range of motion

**Indications:** Carpal tunnel syndrome; Sprains and strains of the wrist; Post-operative immobilization and rehabilitation; Stable fractures of the distal radius and carpal joints

Size	Length	Wrist/Forearm	
		Right	Left
Pediatric	6"	8824-01	8824-06
Small	11"	8824-02	8824-07
Medium	11"	8824-03	8824-08
Large	11"	8824-04	8824-09
X-Large	11"	8824-05	8824-10



HCPCS CODE: L3908 or L3984

### Wrist & Wrist/Forearm Splint

- Poly material construction is lightweight and comfortable for patient
- Unique wedge contour design ensures an intimate fit increasing patient comfort
- Extra-wide loop lock strap at wrist for compression and support
- Removable/malleable palmar and dorsal stays
- Does not extend past the distal palmar crease allowing full finger range of motion

**Indications:** Carpal tunnel syndrome; Sprains and strains of the wrist; Post-operative immobilization and rehabilitation; Stable fractures of the distal radius and carpal joints

Size	Length	Wrist		Length	Wrist/Forearm	
		Right	Left		Right	Left
Pediatric	—	—	—	6"	TX9904-01	TX9904-06
Small	8"	TX9903-02	TX9903-07	11"	TX9904-02	TX9904-07
Medium	8"	TX9903-03	TX9903-08	11"	TX9904-03	TX9904-08
Large	8"	TX9903-04	TX9903-09	11"	TX9904-04	TX9904-09
X-Large	8"	TX9903-05	TX9903-10	11"	TX9904-05	TX9904-10



# Wrist, Hand, and Forearm

## Wrist & Wrist/Forearm

### Universal Black Foam Wrist & Wrist/Forearm Splint

- Comfortable black foam material with tricot lining
- Malleable palmar and dorsal stays provide anatomical fit and proper support
- Moveable dorsal stay makes product universal in size
- D-ring closures for easy application and removal

**Indications:** Sprains and strains of the wrist; Tendonitis; Tenosynovitis of the wrist and distal forearm

Size	Length	Right	Left
Universal	8"	BF5066-82	BF5066-83
Universal	10"	BF5066-80	BF5066-81



HCPCS CODE: L3908 or L3984

### Premium Wrist & Wrist/Forearm Splint

- Constructed of a unique odor resistant material with moisture wicking properties to keep patient's skin cool and dry
- Malleable palmar and dorsal stays provide anatomical fit and proper support
- Movable dorsal stay makes product universal in size
- D-ring closures for easy application and removal

**Indications:** Sprains and strains of the wrist; Tendonitis; Tenosynovitis of the wrist and distal forearm

Size	Length	Right	Left
Universal Wrist	8"	5066-92	5066-93
Universal Wrist/Forearm	10"	5066-90	5066-91



HCPCS CODE: L3908 or L3984

### Universal Foam Wrist & Wrist/Forearm Splint

- Perforated foam material allows skin to breathe
- Malleable palmar and dorsal stays provide anatomical fit and proper support
- Moveable dorsal stay makes product universal in size
- D-ring closures for easy application and removal
- Available without binding around edges for trimming

**Indications:** Sprains and strains of the wrist; Tendonitis; Tenosynovitis of the wrist and distal forearm

Size	Length	w/ Binding Right	Left
Universal	8"	5066-82	5066-83
Universal	10"	5066-80	5066-81

Size	Length	w/o Binding Right	Left
Universal	8½"	5005-03	5005-04
Universal	11½"	5005-01	5005-02



HCPCS CODE: L3908 or L3984

# Wrist, Hand, and Forearm

## Wrist & Wrist/Forearm



HCPCS CODE: L3908 or L3984

### Universal Cutaway Wrist & Wrist/Forearm Splint

- Perforated foam construction allows skin to breathe
- Malleable palmar and dorsal stays provide anatomical fit and proper support
- Loop lock closure at wrist provides compression and support
- Foam can be trimmed for desired fit

**Indications:** Sprains and strains of the wrist; Tendonitis; Tenosynovitis of the wrist and distal forearm

Size	Length	Right	Left
Universal	8"	5040-03	5040-04
Universal	11"	5040-01	5040-02



HCPCS CODE: L3908 or L3984

### Universal Two-Panel Wrist & Wrist/Forearm Splint

- Blue canvas construction with foam tricort lining
- Malleable palmar and dorsal stays limit dorsiflexion motion
- Loop lock closure at wrist provides optimal immobilization and compression
- Universal right/left and sized to fit majority of patients

**Indications:** Sprains or strains of the wrist; Tendonitis; Tenosynovitis of the wrist and distal forearm

Size	Length	Product #
Universal	8"	1000275
Universal	11"	1000285



HCPCS CODE: L3908

### Premium Wrist Splint

- Breathable material with four-way stretch provides patient comfort
- Removable/malleable palmar stay
- Low-profile and lightweight design
- D-ring closures for easy application and removal
- Does not extend past distal palmar crease allowing full finger range of motion

**Indications:** Mild sprains and strains of the wrist; Tendonitis, Carpal tunnel syndrome; Overuse injuries; Tenosynovitis

Size	Length	Right	Left
X-Small	8"	351XSR	351XSL
Small	8"	351SR	351SL
Medium	8"	351MR	351ML
Large	8"	351LR	351LL
X-Large	8"	351XLR	351XLL

## Black Wrist Splint

- Constructed of comfortable black foam material
- Malleable palmar stay provides anatomical fit and rigid support
- Low-profile and lightweight design
- D-ring closures for easy application and removal
- Does not extend past distal palmar crease allowing full finger range of motion

**Indications:** Mild sprains and strains of the wrist; Tendonitis, Carpal tunnel syndrome; Overuse injuries; Tenosynovitis

Size	Length	Right	Left	Length	Right	Left
Pediatric	4"	5073-11	5073-12	-	-	-
X-Small	8"	5073-01	5073-06	10"	5074-01	5074-06
Small	8"	5073-02	5073-07	10"	5074-02	5074-07
Medium	8"	5073-03	5073-08	10"	5074-03	5074-08
Large	8"	5073-04	5073-09	10"	5074-04	5074-09
X-Large	8"	5073-05	5073-10	10"	5074-05	5074-10



HCPCS CODE: L3908

## Lace Up Suede Leatherette Wrist Splint

- Soft, perforated suede leatherette material with nylon tricot lining
- Removable/malleable palmar stay
- Single pull lace closure for compression and easy adjustment
- Does not extend past distal palmar crease allowing full finger range of motion

**Indications:** Mild sprains and strains of the wrist; Tendonitis; Carpal tunnel syndrome; Overuse injuries; Tenosynovitis

Size	Length	Right	Left
X-Small	8"	5023-01	5023-06
Small	8"	5023-02	5023-07
Medium	8"	5023-03	5023-08
Large	8"	5023-04	5023-09
X-Large	8"	5023-05	5023-10



HCPCS CODE: L3908

## Warrior® Wrist Splint

- Constructed of a waffled spacer material for breathability and patient comfort
- Single pull lace closure for easy application
- Malleable palmar stay allows for desired wrist positioning
- Available in universal and x-large sizes
- Does not extend past distal palmar crease allowing full finger range of motion

**Indications:** Mild sprains and strains of the wrist; Tendonitis; Carpal tunnel syndrome; Overuse injuries; Tenosynovitis

Size	Length	Right	Left
Universal	8"	5065-02	5065-01
X-Large	8"	5065-82	5065-81



HCPCS CODE: L3908

# Wrist, Hand, and Forearm

Wrist

Forearm



HCPCS CODE: L3908

## Universal Wrist Splint

- Constructed of comfortable foam material
- Malleable palmar and dorsal stays provide anatomical fit and rigid support
- Movable dorsal stay makes product universal in size
- D-ring closures for easy application and removal

**Indications:** Mild sprains and strains of the wrist; Tendonitis; Carpal tunnel syndrome; Overuse injuries; Tenosynovitis

Size	Length	Right	Left
Universal	7"	5067-01	5067-02



HCPCS CODE: L3908

## Premium Universal Wrist Splint

- Constructed of comfortable foam material that helps keep patient's skin cool and dry
- Dynamic closure allows easy adjustment for an intimate fit
- Removable palmar and dorsal stays make product universal and allow for proper support
- Universal right/left and size fits most patients

**Indications:** Mild sprains and strains of the wrist; Tendonitis; Carpal tunnel syndrome; Overuse injuries; Tenosynovitis

Size	Length	Product #
Universal	8"	5068-00



HCPCS CODE: L3908

## Elastic Wrist Splint

- Cotton elastic construction provides compression
- Removable/malleable palmar stay
- Hook and loop closure for easy application and removal
- Does not extend past distal palmar crease allowing full finger range of motion

**Indications:** Mild sprains and strains of the wrist; Tendonitis; Carpal tunnel syndrome; Overuse injuries; Tenosynovitis

Size	6" Right	6" Left	8" Right	8" Left
Pediatric	5015-01	5015-06	—	—
Small	5015-02	5015-07	5016-02	5016-07
Medium	5015-03	5015-08	5016-03	5016-08
Large	5015-04	5015-09	5016-04	5016-09
X-Large	5015-05	5015-10	5016-05	5016-10

## Universal Ambidextrous Wristlet

- 1/8" neoprene construction provides compression, warmth and support
- Wrap-around design for universal sizing
- Hook and loop closure for easy application
- Universal size fits most patients

**Indications:** Wrist sprains and strains

Size	Product #
Universal	NE7740-70



## Elastic Wrist Support

- Cotton elastic material with thumb opening for precise fit
- Provides snug fit for maximum comfort and compression
- Universal right/left

**Indications:** Wrist sprains and strains

Size	Product #
Small	5019-01
Medium	5019-02
Large	5019-03
X-Large	5019-04



# Wrist, Hand, and Forearm

## Wrist & Thumb



HCPCS CODE: L3809

### Premium Wrist & Thumb Splint

- Breathable material with four-way stretch provides patient comfort
- Removable/adjustable thumb and palmar stay
- Low-profile and lightweight design
- D-ring closures for easy application and removal
- Does not extend past distal palmar crease allowing full finger range of motion

**Indications:** De Quervain's Syndrome; Scaphoid injuries; Carpometacarpal instabilities; Metacarpal fractures; Post cast healing; Gamekeeper's thumb; Cumulative trauma injuries

Size	Length	Right	Left
X-Small	8"	350XSR	350XSL
Small	8"	350SR	350SL
Medium	8"	350MR	350ML
Large	8"	350LR	350LL
X-Large	8"	350XLR	350XLL
XX-Large	8"	350XXLR	350XXLL



HCPCS CODE: L3809

### Black Foam Wrist & Thumb

- Constructed of comfortable foam material
- Removable/adjustable thumb and palmar stay
- D-ring closures for easy application and removal
- Does not extend past distal palmar crease allowing full finger range of motion

**Indications:** De Quervain's Syndrome; Scaphoid injuries; Carpometacarpal instabilities; Metacarpal fractures; Post cast healing; Gamekeeper's thumb; Cumulative trauma injuries

Size	Length	Right	Left
X-Small	8"	A125204	A125104
Small	8"	A125205	A125105
Medium	8"	A125206	A125106
Large	8"	A125207	A125107
X-Large	8"	A125208	A125108
XX-Large	8"	A125209	A125109

### Warrior® Wrist & Thumb Splint

- Constructed of a waffled spacer material for breathability and patient comfort
- Single pull lace closure for easy application
- Malleable thumb and palmar stays allow for desired wrist and thumb positioning
- Available in universal and x-large sizing
- Does not extend past distal palmar crease allowing full finger range of motion

**Indications:** De Quervain's Syndrome; Scaphoid injuries; Carpometacarpal instabilities; Metacarpal fractures; Post cast healing; Gamekeeper's thumb; Cumulative trauma injuries

Size	Length	Right	Left
Universal	8"	5064-02	5064-01
X-Large	8"	5064-82	5064-81



HCPCS CODE: L3809

### Premium Universal Wrist & Thumb Splint

- Constructed of comfortable foam material that helps keep patient's skin cool and dry
- Dynamic closure allows easy adjustment for an intimate fit
- Removable palmar and dorsal stays make product universal and allow for proper support
- Adjustable thumb stay ensures desired thumb positioning
- Universal right/left and size fits most patients

**Indications:** De Quervain's Syndrome; Scaphoid injuries; Carpometacarpal instabilities; Metacarpal fractures; Post cast healing; Gamekeeper's thumb; Cumulative trauma injuries

Size	Length	Product #
Universal	8"	5069-00



HCPCS CODE: L3809

### Comfort Cool® Thumb Wrap

- Constructed of thin neoprene that conforms to hand contours
- Features tiny perforations for cool, comfortable wear
- Soft terry cloth lining
- Provides excellent stability without excessive bulk

**Indications:** Thumb CMC joint support; CMC joint arthritis/instability; Tenosynovitis of thumb extensors/abductors

Size	Measurement*	Right	Left
X-Small	5" - 6"	348XSR	348XSL
Small	6" - 7"	348SR	348SL
Medium	7" - 8"	348MR	348ML
Large	8" - 9"	348LR	348LL
X-Large	9" - 10"	348XLR	348XLL

\*Measure circumference of MP joints



# Wrist, Hand, and Forearm

## Wrist & Thumb



Short



Mid



Long

HCPCS CODE: L3924

## Thermo-Form Thumb Splints

- Constructed of durable neoprene-type material for a smooth, comfortable splint
- Features thermoplastic piece that can be easily molded directly on patient using warm water (160°-170°F) for a custom fit
- Inside pocket holds molded thermoplastic piece that is removable when cool
- Available in three lengths: short, mid and long

**Indications:** Short and Mid lengths: Thumb osteoarthritis; Thumb rheumatoid arthritis; MCP joint injuries; MCP fusion; Tendonitis; Joint fractures  
Long length: De Quervain's Syndrome; Tenosynovitis; Arthritis

Short	Measurement*	Right	Left
X-Small	up to 5½"	359XSR	359XSL
Small	5½" - 6½"	359SR	359SL
Medium	6½" - 7½"	359MR	359ML
Large	7½" - 8½"	359LR	359LL
X-Large	8½" - 9½"	359XLR	359XLL

Mid	Measurement*	Right	Left
X-Small	up to 5½"	360XSR	360XSL
Small	5½" - 6½"	360SR	360SL
Medium	6½" - 7½"	360MR	360ML
Large	7½" - 8½"	360LR	360LL
X-Large	8½" - 9½"	360XLR	360XLL

Long	Measurement*	Right	Left
X-Small	up to 5½"	361XSR	361XSL
Small	5½" - 6½"	361SR	361SL
Medium	6½" - 7½"	361MR	361ML
Large	7½" - 8½"	361LR	361LL
X-Large	8½" - 9½"	361XLR	361XLL

\*Measure wrist circumference



## Universal Ambidextrous Wristlet w/ Abducted Thumb

- 1/8" neoprene construction provides warmth, compression and support
- Wrap-around design for universal sizing
- Designed to hold thumb in abducted position
- Hook and loop closure for easy application

**Indications:** Arthritis; Thumb sprains; Tendonitis

Size	Product #
Universal	NE7738-70



### Wrist/Thumb & Thumb Spica

- Lightweight splint constructed of perforated foam
- Thumb spica supports thumb while allowing IP joint to remain free
- Wrist and thumb spica supports the wrist and IP joint of the thumb
- Soft inner lining wicks away perspiration for comfort and hygiene
- Stretch loop straps designed for a precise anatomical fit allowing hand and finger function
- May be trimmed for a custom fit
- Thumb version available in white or black foam

**Indications:** De Quervain's Syndrome; CMC arthritis; Post-thumb fractures; Tendon injury/repair

#### THUMB - WHITE FOAM

Size	Measurement*	Right	Left
Small/Medium	2½" - 3½"	340S/MR	340S/ML
Medium/Large	3½" - 4¼"	340M/LR	340M/LL

#### THUMB - BLACK FOAM

Size	Measurement*	Right	Left
Small/Medium	2½" - 3½"	343S/MR	343S/ML
Medium/Large	3½" - 4¼"	343M/LR	343M/LL

#### WRIST/THUMB - WHITE FOAM

Size	Measurement*	Right	Left
Small/Medium	2½" - 3½"	345S/MR	345S/ML
Medium/Large	3½" - 4¼"	345M/LR	345M/LL

\*Measure width of hand at MP joints



HCPCS CODE: L3924

### Universal Leatherette Thumb Splint

- Constructed of durable perforated leatherette material
- Can be used alone or in combination with wrist and forearm splint for thumb support
- Universal size fits most patients

**Indications:** Thumb intrinsic muscle injuries; Post-thumb fracture; Collateral ligament injuries of the thumb

Size	Product #
Universal	5026-00



HCPCS CODE: L3924

# Wrist, Hand, and Forearm

## Wrist & Thumb



HCPCS CODE: L3807 or L3809

### Warrior® Boxer Fracture Brace

- Constructed of a waffled spacer material for breathability and patient comfort
- Single pull lace closure for easy application
- Positions and protects the 2<sup>nd</sup> and 3<sup>rd</sup> or 4<sup>th</sup> and 5<sup>th</sup> metacarpals using a malleable aluminum stay
- Malleable palmar stay allows for desired wrist positioning
- Available in universal and x-large sizing
- Does not extend past distal palmar crease allowing full finger range of motion

**Indications:** Boxer's fracture; Metacarpal fractures; Proximal phalanx fracture; Middle phalanx fracture

Size	Length	Right	Left
Universal	8"	5063-02	5063-01
X-Large	8"	5063-82	5063-81



HCPCS CODE: L3809

### LMB™ Air-Soft™ Resting Hand Splint

- Supports fingers, thumb and wrist in functional/resting position with simple adjustment of the wrist and thumb
- Malleable aluminum frame allows for static progressive splinting
- Self-wicking liner helps to control perspiration

**Indications:** Post-surgery/injury positioning; Wrist drop; Finger flexor tightness; Not recommended when moderate to severe spasticity is present

Size	Measurement*	Right	Left
Small	2¼" - 2¾"	325BR	325BL
Medium	2⅞" - 3¼"	325CR	325CL
Large	3⅜" - 3¾"	325DR	325DL

\*Measure width of hand at MP joints



HCPCS CODE: L3807 or L3809

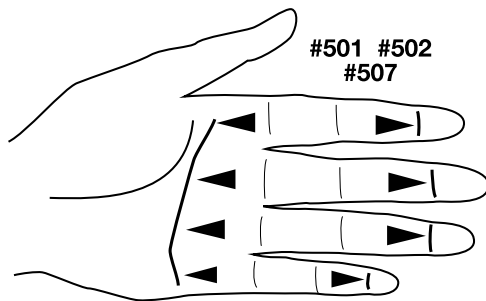
### LMB™ Wire-Foam™ Resting Hand Splint

- Supports fingers, thumb and wrist in functional/resting position with simple adjustment of the wrist and thumb
- High quality Wire-Foam™ construction for a customized fit
- Malleable frame allows for static progressive splinting
- Hand washable with removable criss-cross wrist straps that help secure wrist

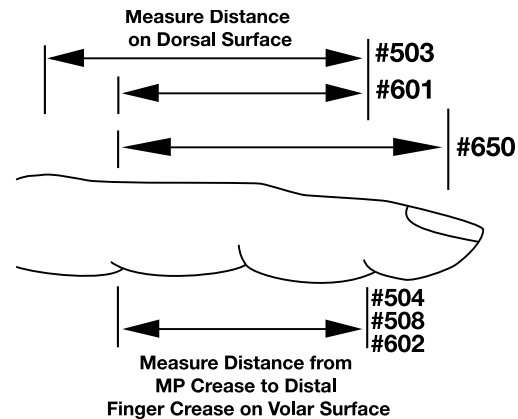
**Indications:** Post-surgery/injury positioning; Wrist drop; Finger flexor tightness; Not recommended when moderate to severe spasticity is present

Size	Measurement*	Right	Left
Small	2¼" - 2¾"	125BR	125BL
Medium	2⅞" - 3¼"	125CR	125CL
Large	3⅜" - 3¾"	125DR	125DL

\*Measure width of hand at MP joints



Measure Finger to be fitted from Palmar Crease to Distal Finger Crease (Finger Extended)



## LMB™ Spring Finger Extension Assist

- High quality Wire-Foam™ construction for a customized fit
- Versatile model extends PIP joint with a slight extension effect on MP joint
- Designed for patient comfort with an emphasis on distal pad curvature
- Tension is adjustable by careful bending
- Force: 15° flexion ≈ approx. 8 oz.; 90° flexion ≈ approx. 4 lbs.

**Indications:** Finger flexion tightness; Boutonniere deformity (allows IP flexion)

Size	Measurement	Product #
X-Small	2¼"	501AA
Small	2⅝"	501A
Medium	3"	501B
Large	3½"	501C
X-Large	4"	501D



HCPCS CODE: L3925

## LMB™ Spring PIP Extension Assist

- High quality Wire-Foam™ construction for a customized fit
- Shorter version of model #501
- Does not interfere with the MP joint while extending the PIP joint
- Tension is adjustable by careful bending
- Force: 15° flexion ≈ approx. 8 oz.; 90° flexion ≈ approx. 4 lbs.

**Indications:** PIP joint tightness; Boutonniere deformity

Size	Measurement	Product #
X-Small	1¾"	504AA
Small	1⅞"	504A
Medium	2"	504B
Large	2¼"	504C
X-Large	2⅝"	504D



HCPCS CODE: L3925

# Wrist, Hand, and Forearm

## Finger Splints



HCPCS CODE: L3925

### LMB™ Acu-Spring Finger Extension Assist

- High quality Wire-Foam™ construction for a customized fit
- Ideal for regaining last few degrees of PIP extension with slightly more force than model #501
- Axis of motion is close to the PIP joint to maintain splint alignment
- Broad, curved dorsal center pad distributes pressure over a large area
- Tension is adjustable by careful bending
- Force: 15° flexion ≈ approx. 12 oz.; 90° flexion ≈ approx. 6 lbs.

**Indications:** Joint tightness; Flexion contractures

Size	Measurement	Product #
X-Small	2¼"	507AA
Small	2⅝"	507A
Medium	3"	507B
Large	3⅜"	507C
X-Large	3¾"	507D



HCPCS CODE: L3925

### LMB™ Acu-Spring PIP Extension Assist

- High quality Wire-Foam™ construction for a customized fit
- Shorter version of model #507
- Does not interfere with the MP joint while extending the PIP joint
- Tension adjustable by careful bending
- Force: 15° flexion ≈ approx. 12 oz.; 90° flexion ≈ approx. 6 lbs.

**Indications:** Joint tightness; Flexion contractures

Size	Measurement	Product #
X-Small	1¾"	508AA
Small	2"	508A
Medium	2¼"	508B
Large	2⅝"	508C
X-Large	3"	508D

### LMB™ Light Extension Finger Spring

- High quality Wire-Foam™ construction for a customized fit
- Produces extensions of the PIP or DIP joints
- Capable of fully extending supple joint
- May be worn on adjacent fingers
- Tension adjustable by careful bending
- Lighter tension than models #501, #502, #507 and #508
- Force: Full flexion ≈ 1.75 lbs.; Full extension ≈ 1.0 lbs.

**Indications:** Crush injuries; Boutonniere deformity; Burns

Size	Measurement	Product #
X-Small	1¼"	602AA
Small	1½"	602A
Medium	1¾"	602B
Large	2¼"	602C
X-Large	2¾"	602D



HCPCS CODE: L3925

### LMB™ Spring Coil Finger Extension Assist

- High quality Wire-Foam™ construction for a customized fit
- Extension splint (also called “Wynn Parry” or Capener splint) uses coil springs placed lateral to and in line with PIP joint
- Curved proximal and distal supports distribute pressure evenly
- Extension assistance adjustable by altering distal strap
- Provides uniform force throughout the range and offers stronger spring tension at extended position than models #501 or #602
- Force: Full extension ≈ 2.75 lbs.

**Indications:** PIP flexion tightness

Size	Measurement	Product #
Small	2½"	502A
Medium	2¾"	502B
Large	3"	502C
X-Large	3¼"	502D



HCPCS CODE: L3925

# Wrist, Hand, and Forearm

## Finger Splints



HCPCS CODE: L3925

### LMB™ Spring Coil Finger Flexion Assist

- High quality Wire-Foam™ construction for a customized fit
- Coil springs lateral to the PIP joint assist middle phalanx into flexion
- Dorsal pad distributes pressure evenly
- Proximal strap provides adjustable tension and must be positioned to achieve proper joint alignment
- Capable of bending supple joint to approximately 80°
- Finger pad is free allowing for function

**Indications:** PIP extension; Soft tissue tightness

Size	Measurement	Product #
Small	2½"	503A
Medium	2¾"	503B
Large	3"	503C
X-Large	3¼"	503D



HCPCS CODE: L3925

### LMB™ Light Flexion Finger Spring

- High quality Wire-Foam™ construction for a customized fit
- Produces flexion of the PIP or DIP joints
- Finger pad is free allowing for function
- Capable of bending supple joint to approximately 80°
- May be worn on adjacent fingers
- Tension adjustable by careful bending- lighter than model #503

**Indications:** Crush injuries; Swan neck deformity

Size	Measurement	Product #
X-Small	1¼"	601AA
Small	1½"	601A
Medium	1¾"	601B
Large	2¼"	601C
X-Large	2¾"	601D

### LMB™ PIP/DIP Finger Splint

- High quality Wire-Foam™ construction for a customized fit
- Splint can be positioned for isolated PIP extension or combined PIP and DIP extension
- Stretch loop material provides compression, ventilation and comfort

**Indications:** Boutonniere deformity; Collateral ligament injuries; Digital flexion contractures; Mallet finger

Size	Measurement	Product #
Small	1 $\frac{3}{8}$ " - 1 $\frac{5}{8}$ "	650A
Medium	1 $\frac{5}{8}$ " - 1 $\frac{7}{8}$ "	650B
Large	1 $\frac{7}{8}$ " - 2 $\frac{1}{8}$ "	650C
X-Large	2 $\frac{1}{8}$ " - 2 $\frac{1}{2}$ "	650D
XX-Large	2 $\frac{1}{2}$ " - 3"	650E



HCPCS CODE: L3925

### LMB™ Finger-Hugger

- Soft Lycra® material is breathable for patient comfort and washable for hygiene
- Two positioning capabilities: dynamic extension assist and static progressive (stays included)
- Adjustable compression provides gradual edema control
- Ideal for DIP, PIP, total finger or thumb

**Indications:** Post finger fractures; Sprains; Ligament and tendon injuries; Boutonniere deformity; Mallet finger

Size	Measurement*	Black
X-Small	1 $\frac{1}{2}$ "	670AABLK
Small	2"	670ABLK
Medium	2 $\frac{1}{2}$ "	670BBLK
Large	3"	670CBLK
X-Large	3 $\frac{1}{2}$ "	670DBLK

\*Measure MP crease to end of finger (extended)



HCPCS CODE: L3925

# Wrist, Hand, and Forearm

## Finger Splints



### LMB™ Dynamic Finger Spring Kit

- Complete assortment of 28 dynamic Wire-Foam™ finger springs and LMB Finger-Huggers in convenient storage container

**Description**  
Complete Kit

**Product #**  
6000

**Kit Includes:**

- One each of sizes A, B, C of models 502, 503, 504, 508, 601, 602
- One each of sizes A, B, C, D of models 501, 507
- One each of models 670ABLK, 670BBLK  
(All sizes sold separately)



### Buddy Strap

- Soft foam material with hook fastener can be cut for custom fit for individual requirements
- Used in hand therapy to enable a stronger finger to assist a weaker one

**Indications:** Fractures of phalanges; Ligament injuries; Injuries that require buddy taping

**Size**  
Universal

**Quantity**  
6/Case

**Product #**  
804



### PIP/DIP Finger Flexion Strap

- Constructed of leather material with hook and loop strap
- Designed to position PIP and DIP joints in flexion
- Easily adjustable for comfort or increased range
- Patented after original design of OTR Irene Hollis

**Indications:** PIP and DIP flexion

**Size**  
Universal

**Quantity**  
6/Case

**Product #**  
801

HCPCS CODE: L3925



### STAX Finger Splint Kit

- Includes an assortment of 30 splints packaged in convenient storage container
- Protects distal phalanx and extends the DIP joint
- Open tip permits examination of fingertip and nailbed

**Indications:** Fingertip injuries; Nailbed injuries; Mallet finger

Description	Qty	Product #
Complete Kit	1 Kit	9122-00
Kit Includes:		
Size 1	5 Each	9121-01
Size 2	5 Each	9121-02
Size 3	5 Each	9121-03
Size 4	5 Each	9121-04
Size 5	5 Each	9121-05
Size 5½	2 Each	9121-07
Size 6	2 Each	9121-06
Size 7	1 Each	9121-08

(All sizes sold individually as each)



HCPCS CODE: L3927

# Wrist, Hand, and Forearm

## Finger Splints



### Plastalume Splints

- Includes an assortment of 54 splints packaged in convenient storage container
- Constructed of malleable, vinyl coated aluminum with foam backing

Description	Qty	Product #
Complete Kit	1 Kit	9120-00
Kit Includes:		
1¼" Length	6 Each	9119-01
2¼" Length	6 Each	9119-02
3¼" Length	6 Each	9119-03
4¼" Length	6 Each	9119-04
3¼" Length, circular base	6 Each	9119-05
4¼" Length, circular base	6 Each	9119-06
5¼" Length, circular base	6 Each	9119-07
6¼" Length, circular base	6 Each	9119-08
7¼" Length, circular base	6 Each	9119-09

(All sizes sold individually as 12/Case)



### Baseball Finger Splints

- Lightweight aluminum can be easily adjusted for proper fit
- Foam padding for patient comfort
- Easily moldable to maintain desired position
- Packaged 12/Case

**Indications:** Fractures of the distal phalanx

Size	Length	Product #
Small	4¼"	9109-01
Medium	4¾"	9109-02
Large	5¾"	9109-03



### Toad Finger Splints

- Lightweight aluminum can be easily adjusted for proper fit
- Foam padding for patient comfort
- Malleable arms fold to hold finger in desired alignment
- Packaged 12/Case

**Indications:** Distal and proximal interphalangeal joint positioning

Size	Length	Product #
Small	2¼"	9110-01
Medium	2¾"	9110-02
Large	2⅞"	9110-03

### Fold Over Finger Splints

- Lightweight aluminum can be adjusted for proper fit
- Foam padding for patient comfort
- Available with or without foam padding
- Packaged 12/Case

**Indications:** Protects injured nails and fingertips; Baseball or transverse fractures of the finger

Size	Length	w/ Foam	w/o Foam
Small	1"	9111-01	9111-04
Medium	2"	9111-02	9111-05
Large	3"	9111-03	9111-06
X-Large	3½"	9111-07	9111-08



### Four Prong Finger Splints

- Lightweight aluminum can be adjusted for proper fit
- Foam padding for patient comfort
- Packaged 12/Case

**Indications:** Provides protection and immobilization to injured fingers

Size	Length	Product #
Small	2"	9112-01
Medium	3"	9112-02
Large	3½"	9112-03



### Gutter Splints

- Lightweight aluminum can be easily adjusted for proper fit
- Foam padding for patient comfort
- Features slight angle at tip to address a variety of phalangeal injuries
- Packaged 12/Case

**Indications:** Phalangeal and metacarpal fractures; Finger dislocations

Measurement	Product #
1½" x 7/8"	9113-01
3" x 7/8"	9113-02
4" x 7/8"	9113-05
5½" x 7/8"	9113-03
7" x 7/8"	9113-04



# Wrist, Hand, and Forearm

## Finger Splints



### Padded Finger Splint Assortment Kit

- Includes an assortment of 57 splints packaged in convenient storage container
- Constructed of lightweight aluminum with foam padding

Description	Qty	Product #
Complete Kit	1 Kit	9100-00
Kit Includes:		
2 <sup>3</sup> / <sub>4</sub> " Toad Splints	12 Each	9110-02
2 <sup>7</sup> / <sub>8</sub> " Toad Splints	12 Each	9110-03
1 <sup>1</sup> / <sub>2</sub> " Gutter Splints	6 Each	9113-01
3" Gutter Splints	6 Each	9113-02
2" Fold Over Finger Splints	6 Each	9111-02
3" Fold Over Finger Splints	6 Each	9111-03
3 <sup>1</sup> / <sub>2</sub> " Fold Over Finger Splints	9 Each	9111-07

(All sizes sold individually as 12/Case)



### Foam Padded Finger Strips

- Constructed of aluminum with foam padding
- Easy to form and can be cut to desired length with scissors
- Packaged 12/Case

**Indications:** Phalangeal fractures

Measurement	Product #
1/2" x 9"	9115-01
1/2" x 18"	9115-02
3/4" x 18"	9115-03
1" x 18"	9115-04
1 1/2" x 18"	9115-05
2" x 18"	9115-06



### Finger Splints

- Lightweight aluminum foam construction can be easily adjusted for proper fit
- Universal right/left
- Packaged 6/Case

**Indications:** Phalangeal fractures

Size	Product #
Small	9125-01
Medium	9125-02
Large	9125-03

### Wrist and Forearm Splint

- Pre-molded aluminum design for an anatomical fit and proper support
- Perforated design promotes air circulation
- Foam padding for patient comfort

**Indications:** Post-operative rehabilitation; Severe sprains and strains of the wrist; Wrist and distal forearm immobilization

Size	Right	Left
Child	9101-01	9101-04
Youth	9101-02	9101-05
Adult	9101-03	9101-06



### Colles' Splint

- Pre-molded aluminum design for an anatomical fit and proper support
- Perforated design promotes air circulation
- Foam padding for patient comfort

**Indications:** Colles' injury; Wrist immobilization

Size	Right	Left
Infant	9105-07	9105-08
Child	9105-01	9105-04
Youth	9105-02	9105-05
Adult	9105-03	9105-06



### Short Metacarpal Splint

- Pre-molded aluminum design for an anatomical fit and proper support
- Contoured design to fit in palm of hand
- Perforated design promotes air circulation
- Foam padding for patient comfort

**Indications:** Phalangeal and metacarpal fractures

Size	Right	Left
Child	9136-01	9136-02
Youth	9134-01	9134-02
Adult	9135-01	9135-02



# Wrist, Hand, and Forearm

## Aluminum Splints



### Mason Allen Hand Splint

- Pre-molded aluminum design for an anatomical fit and proper support
- Available with or without foam padding
- Universal right/left

**Indications:** Immobilization of entire hand and wrist

Size	w/ Foam	w/o Foam
Small	9133-01	9133-04
Universal	9133-03	9133-06



### Posterior Leg Splint

- Pre-molded aluminum design for an anatomical fit and proper support
- Open front for easy application
- Short or full leg length options
- Foam padding for patient comfort

**Indications:** Short: Transverse fractures of the tibia/fibula; Ankle fractures; Lower leg immobilization; Full: Shaft fractures of the femur; Knee immobilization

Short Leg	Length	Product #
Child	12"	9127-01
Youth	14"	9127-02
Adult	16"	9127-03

Full Leg	Length	Product #
Child	19½"	9128-01
Youth	25"	9128-02
Adult	31"	9128-03

# Fracture Bracing and Splints

## Fracture Bracing

### Fracture Bracing

- Orthopedic grade thermoplastic construction
- Prefabricated and anatomically designed for best fit
- Durable, lightweight, adjustable and easy to remove for proper hygiene
- Allows for movement of muscles surrounding fracture site
- Hook and loop closures help maintain soft tissue compression

**Indications:** Treatment and management of diaphyseal fractures; Post surgical immobilization

Humeral Size	Distal Circumference	Proximal Circumference	Regular	Extended
Small	7" - 9"	9" - 11"	FB1000-10	FB2000-10
Medium	9" - 11"	11" - 13"	FB1000-12	FB2000-12
Large	11" - 13"	13" - 15"	FB1000-14	FB2000-14
X-Large	13" - 15"	15" - 17"	FB1000-16	FB2000-16

Ulnar Size	Distal Circumference	Proximal Circumference	Product #
Small	6½" - 7½"	7½" - 9"	FB4000-10
Medium	7½" - 8½"	9" - 11"	FB4000-12
Large	8½" - 9½"	11" - 13"	FB4000-14

Wrist, Hand, Thumb Size	Palm Width	Left	Right
Small	2½" - 3"	FB5000-10	FB5000-16
Medium	3" - 3½"	FB5000-12	FB5000-18
Large	3½" - 4"	FB5000-14	FB5000-20

Wrist Size	Palm Width	Left	Right
Small	2½" - 3"	FB5000-30	FB5000-36
Medium	3" - 3½"	FB5000-32	FB5000-38
Large	3½" - 4"	FB5000-34	FB5000-40

Tibial Size	Calf Circumference	Ankle Circumference	Left	Right
Small	12½"	9"	FB3000-10	FB3000-20
Medium	14"	10"	FB3000-12	FB3000-22
Medium/Long	15"	10"	FB3000-14	FB3000-24
Large	16"	11"	FB3000-16	FB3000-26



HCPCS CODE: L3980



HCPCS CODE: L3980



HCPCS CODE: L3982



HCPCS CODE: L3984



HCPCS CODE: L2114



### Universal Recovery Post-Operative Knee Brace

- Lightweight
- Enhanced locking ROM hinge makes adjustment easy and increases patient compliance or inadvertent change in ROM settings
- Easy latch-and-release lever buckles makes donning and doffing easy
- Adjustable inner panel location to avoid incision sites and provide a customize fit
- Compressed foam padding provides additional cushion and increased airflow
- Universally sized with intuitive telescoping length adjustments (18 – 27")
- Numerous drop lock configurations with five convenient preset drop lock settings
- Additional cuff panel hook and loop engagement helps prevent the struts from migrating around the leg during patient movement
- Flexible panels increase patient comfort
- Soft, trimmable straps with removable y-tab for customized fit
- Extended padding protects ankle from soft tissue irritation
- Anti-migration silicone strapping provided

**Indications:** Post-operative stabilization and rehabilitation; Post total knee replacement; Post ORIF; Fractures of the femur, tibia, fibula or patella; Ligament reconstructive procedures; Meniscal repairs; Post-fracture management

Description	Length Adjustment	Product #
Universal	18" - 27"	KB3000-01



HCPCS CODE: L1832 or L1833

### Warrior® Recovery Post-Operative Knee Brace

- Lever-action telescoping struts for length adjustments from 18" - 29"
- Four convenient preset drop lock settings: 0°, 15°, 30°, and 45°
- Enhanced range of motion hinge interface for easy adjustment and patient compliance
- Range of motion can be set in 10° increments
- Removable Y-tabs on the straps allow for strap trimming for varying patient anatomy
- Adjustable inner pad panel to avoid incision sites and provide a more customized fit
- Customizable anti-migration strap pad for superior hold to reduce slippage
- Integrated "bend zone" on lower hinge arms allows for customization for varying patient anatomies
- Laminate reinforced padding to support prolonged use and maintain pad integrity
- Extended padding at malleoli to prevent irritation and improve comfort during use

**Indications:** Post-operative stabilization and rehabilitation; Post total knee replacement; Post ORIF; Fractures of the femur, tibia, fibula or patella; Ligament reconstructive procedures; Meniscal repairs; Post-fracture management

Description	Length Adjustment	Product #
Universal	18" - 29"	KB9000-01



### Slimline II Knee Brace

- Snap-lock hinge cover design with simple pin adjustment
- Range of motion can be set at 5°, 15°, 30°, 60° or 90° of flexion and 0°, 15°, 30°, 60° or 90° of extension
- Superior and inferior score zones for length adjustment
- Circumferential loop lock straps allow for even compression
- Trimmable softgoods available in full or cool foam options

**Indications:** Post-operative stabilization and rehabilitation; Post total knee replacement; Post ORIF; Fractures of the femur, tibia, fibula or patella; Ligament reconstructive procedures; Meniscal repairs; Post-fracture management



HCPCS CODE: L1832 or L1833

Description	Length Adjustment	Product #
Full Foam	23" - 17"	KB6000-00
Cool Foam	23" - 17"	KB6000-01

### OA Single Upright Knee Brace

- Exceptionally lightweight, low-profile, and easy to use design
- Unique varus/valgus angle adjustment to provide compartmental off-loading and optimize pain relief
- Lateral application avoids tibial crest pressure and medial clearance issues
- Maximizes three points of leverage
- Four SKUs promote inventory reduction and minimal stocking levels
- Interchangeable condyle pads for OA off-loading, increased comfort, stability and pain control
- Quick-release buckles for easy donning and doffing
- Silicone gripped liners and strap pad help prevent migration
- Optional suspension wrap (included) for optimal fixation
- Optional flexion/extension stops for range of motion control
- Numbered strapping system for intuitive donning and doffing

**Indications:** Mild to severe unicompartmental osteoarthritis



HCPCS CODE: L1843 or L1851

Size	Measurement	Left Varus/Valgus	Right Varus/Valgus
Standard	< 6'2" Tall	14514100	14514200
Tall	> 6'2" Tall	14514300	14514400



HCPCS CODE: L1845 or L1852

### OA Double Upright Knee Brace

- Patented low-profile thigh cuff dual strapping system moves with the thigh musculature through the range of motion to maintain total contact for enhanced support and brace suspension
- Double hinge changes the overall varus/valgus angle of the brace for optimal OA correction leverage
- Exceptionally lightweight, low-profile, and easy to use design
- Unique varus/valgus angle adjustment to provide compartmental off-loading and optimized pain relief
- Interchangeable condyle pads for OA off-loading, increased comfort, stability and pain control
- Maximizes three points of leverage
- Numbered strapping system for intuitive donning and doffing
- Optional flexion/extension stops for range of motion control

**Indications:** Mild to severe unicompartmental osteoarthritis

Size	6" Above Mid-Patella	Mid-Patella	6" Below Mid-Patella	Left Varus/Valgus	Right Varus/Valgus
Small	15½" - 18½"	11" - 13"	12¼" - 13¾"	14515105	14515205
Medium	18½" - 21"	13" - 15"	13¾" - 15"	14515106	14515206
Large	21" - 23½"	15" - 17"	14¼" - 15¾"	14515107	14515207
X-Large	23½" - 25"	17" - 19"	15" - 17"	14515108	14515208
XX-Large	25" - 28"	19" - 22"	17" - 19"	14515109	14515209



HCPCS CODE: L1843 or L1851

### DeRoyal® OA Motion Knee Brace

- Lightweight, easy to apply wrap around design
- Laterally applied for medial OA and medially applied for lateral OA
- Maximizes three points of leverage for OA pain reduction and stability
- Quick-release buckles for easy donning and doffing
- Wrap constructed of non-neoprene fabric for patient comfort
- Breathable nylon-spandex construction on back
- Padded hinge and ½" thick condyle pad

**Indications:** Mild to moderate unicompartmental osteoarthritis

Size	6" Above Mid-Patella	Mid-Patella	6" Below Mid-Patella	Left Medial Right Lateral	Right Medial Left Lateral
X-Small/Small	>14½" - 17"	11½" - 13"	11½" - 13"	14513112	14513212
Medium/Large	17" - 22½"	13" - 17"	13" - 16½"	14513134	14513234
X-Large/XX-Large	22½" - 30"	17" - 22"	16½" - 22"	14513156	14513256

### Functional ACL Knee Brace

- Full-frame brace design provides optimal support and is ideal for high-active or contact sports/use
- Aerospace grade aluminum frame is strong yet customizable
- Posterior calf cuff reduces tibial pressure
- Interchangeable condyle pads for increased comfort, stability, and protection
- Numbered strapping system for intuitive application and removal
- Posterior calf cuff reduces tibial pressure
- Silicone gripped calf strap liner to help prevent migration
- Optional flexion/extension stops for range of motion control



HCPCS CODE: L1845 or L1852

**Indications:** Mild to moderate ACL, PCL, MCL, and LCL sprains; Combined ligament instabilities

Size	6" Above		6" Below		Left	Right
	Mid-Patella	Mid-Patella	Mid-Patella	Mid-Patella		
Small	14½" - 17"	11½" - 13"	11½" - 13"	14534105	14534205	
Medium	17" - 19½"	13" - 15"	13" - 14½"	14534106	14534206	
Large	19½" - 22½"	15" - 17"	14½" - 16½"	14534107	14534207	
X-Large	22½" - 25½"	17" - 19"	16½" - 18½"	14534108	14534208	
XX-Large	25½" - 30"	19" - 22"	18½" - 22"	14534109	14534209	



HCPCS CODE: L1833 and L2810

### Warrior® II Knee Brace

- Available in wrap-around design and half-wrap design to optimize individual patient fit and comfort
- Flex-tab feature to prevent hinge discomfort or irritation
- Plaited stretch-nylon material (engineered for swimwear) helps wick away moisture and promote aeration behind the leg and popliteal region
- Waffled spacer fabric promotes breathability for a cooler environment
- Removable condyle pads for increased comfort and stability
- One detachable, inferior half-moon shaped buttress (half-wrap) for patellar control
- Optional flexion/extension stops (0° - 100° in 10° increments) for range of motion control
- Optional “hypercontrol” strapping to help prevent hyperextension (regular length design)

**Indications:** Mild to moderate ACL, PCL, MCL, LCL; Combined ligament instabilities; Patellar subluxation

Size	Measurement*	Wrap Around Regular	Wrap Around Short	Half Wrap Regular	Half Wrap Short
X-Small	13" - 15½"	14012004	14022004	14013004	14023004
Small	15½" - 18½"	14012005	14022005	14013005	14023005
Medium	18½" - 21"	14012006	14022006	14013006	14023006
Large	21" - 23½"	14012007	14022007	14013007	14023007
X-Large	23½" - 26½"	14012008	14022008	14013008	14023008
XX-Large	26½" - 29½"	14012009	14022009	14013009	14023009
XXX-Large	29½" - 32"	14012010	14022010	14013010	14023010

\*Measure circumference 6" above mid-patella

### Hypercontrol® Knee Brace

- Tri-tex™ construction serves as a breathable alternative to neoprene
- Anatomical design features unique strapping system at the back of the knee to assist in preventing hyperextension
- Medial and lateral hinges help prevent hyperextension of the knee
- Pull-up or wrap around design available
- Dual adjustable buttresses for maximum patella stabilization (pull-up style only)
- Extension tabs at the thigh and calf accommodate circumferential variances (pull-up style only)
- Superior adjustability for patient comfort
- Condyle pads for additional patient comfort



HCPCS CODE: L1820

**Indications:** Grade I or II collateral ligament sprain; Mild ACL/PCL sprain; Grade I varus and valgus instability

Size	Measurement*	Pull-Up	Wrap Around
X-Small	13½" - 15½"	14630004	—
Small	15½" - 18"	14630005	14910005
Medium	18" - 20½"	14630006	14910006
Large	20½" - 23"	14630007	14910007
X-Large	23" - 25½"	14630008	14910008
XX-Large	25½" - 28"	14630009	14910009
XXX-Large	28" - 30½"	14630010	14910010

\*Measure circumference 6" above mid-patella

### Deluxe Hinged Knee Brace

- ⅛" neoprene construction provides warmth, compression and support
- Medial and lateral hinges with range of motion at 0°, 15°, 30° and 45° to limit extension
- Covered hinges allow brace to be worn during contact sports
- Elastic straps above and below knee help prevent migration
- Superior felt buttress helps control patella
- Condyle pads for additional patient comfort



HCPCS CODE: L1820

**Indications:** Grade I collateral ligament sprain; Mild ACL/ PCL sprain; Grade I varus and valgus instability; Patellar subluxation; Osteoarthritis

Size	Measurement*	Product #
Small	13" - 14"	NE7722-72
Medium	14" - 15"	NE7722-73
Large	15" - 17"	NE7722-74
X-Large	17" - 18"	NE7722-75
XX-Large	18" - 20"	NE7722-76
XXX-Large	20" - 22"	NE7722-77

\*Measure circumference 6" above mid-patella



HCPCS CODE: L1820

### Hinged Knee Brace

- 1/8" neoprene construction provides warmth, compression and support
- Hinges provide medial and lateral support
- Pull-up or wrap around design available
- Features open popliteal for breathability
- Condyle pads for additional patient comfort

**Indications:** Grade I or II collateral ligament sprain; Mild ACL/ PCL sprain; Grade I varus and valgus instability

Size	Measurement*	Pull-Up	Wrap Around
X-Small	13½" - 15½"	NE7711-71	NE7711-81
Small	15½" - 18"	NE7711-72	NE7711-82
Medium	18" - 20½"	NE7711-73	NE7711-83
Large	20½" - 23"	NE7711-74	NE7711-84
X-Large	23" - 25½"	NE7711-75	NE7711-85
XX-Large	25½" - 28"	NE7711-76	NE7711-86

\*Measure circumference 6" above mid-patella



HCPCS CODE: L1820 (Tri-tex™ Only)

### Patella Stabilizer

- 1/8" neoprene construction provides warmth, compression and support
- Also available in breathable Tri-tex™ material
- Full length design for maximum support and compression
- Unique strapping system helps pull patella into desired position
- Horseshoe-shaped pad can be placed on medial or lateral side of patella
- Medial and lateral hinges for additional ligament support (Tri-tex™ only)

**Indications:** Medial or lateral patellar subluxation; Chondromalacia; Patellofemoral tracking dysfunction

Size	Measurement*	Neoprene Right	Neoprene Left	Tri-tex™ Right	Tri-tex™ Left
X-Small	13½" - 15½"	NEP779371R	NEP779371L	14840204	14840104
Small	15½" - 18"	NEP779372R	NEP779372L	14840205	14840105
Medium	18" - 20½"	NEP779373R	NEP779373L	14840206	14840106
Large	20½" - 23"	NEP779374R	NEP779374L	14840207	14840107
X-Large	23" - 25½"	NEP779375R	NEP779375L	14840208	14840108
XX-Large	25½" - 28"	NEP779376R	NEP779376L	14840209	14840109

\*Measure circumference 6" above mid-patella

### Concise Patella Stabilizer

- 1/8" neoprene construction provides warmth, compression and support
- Also available in breathable Tri-tex™ material
- Low-profile design allows for increased range of motion during activity
- Unique strapping system helps pull patella into desired position
- Universal right/left

**Indications:** Medial or lateral patellar subluxation; Chondromalacia; Patellofemoral tracking dysfunction

Size	Measurement*	Neoprene	Tri-tex™
X-Small	13½" - 15½"	NEP7790-71	14750004
Small	15½" - 18"	NEP7790-72	14750005
Medium	18" - 20½"	NEP7790-73	14750006
Large	20½" - 23"	NEP7790-74	14750007
X-Large	23" - 25½"	NEP7790-75	14750008
XX-Large	25½" - 28"	NEP7790-76	14750009

\*Measure circumference 6" above mid-patella



### Patella Band

- Constructed of neoprene for durability
- Unique bi-lateral strapping allows for greater control of buttress tension over patellar tendon
- Pull-up design helps promote compliance and reduce migration
- Low-profile design provides patient comfort

**Indications:** Patellar tendonitis; Osgood-Schlatter's disease; Jumper's knee

Size	Measurement*	Product #
X-Small	11" - 12"	14640004
Small	12" - 13"	14640005
Medium	13" - 14"	14640006
Large	14" - 15"	14640007
X-Large	15" - 16"	14640008
XX-Large	16" - 17"	14640009

\*Measure circumference 6" above mid-patella





### Deluxe Knee Support w/ Trimmable Buttress

- 1/8" neoprene construction provides warmth, compression and support
- Anterior strapping above and below knee helps prevent migration while medial/lateral stays help provide additional stability
- Enclosed tubular buttress can be trimmed for desired patella position
- Available in open or closed popliteal

**Indications:** Grade I collateral ligament sprain; Patellar subluxation; Chondromalacia; Patellar tendonitis; Patellofemoral tracking dysfunction; Patellar dislocation; Quadriceps tendonitis; Plica syndrome

Size	Measurement*	Closed Popliteal	Open Popliteal
X-Small	13½" - 15½"	NE7718-71	14882004
Small	15½" - 18"	NE7718-72	14882005
Medium	18" - 20½"	NE7718-73	14882006
Large	20½" - 23"	NE7718-74	14882007
X-Large	23" - 25½"	NE7718-75	14882008
XX-Large	25½" - 28"	NE7718-76	14882009
XXX-Large	28" - 30½"	NE7718-77	14882010

\*Measure circumference 6" above mid-patella



### Knee Support w/ Trimmable Buttress

- 1/8" neoprene construction provides warmth, compression and support
- Enclosed tubular buttress can be trimmed for desired patella position

**Indications:** Grade I collateral ligament sprain; Patellar subluxation; Chondromalacia; Patellar tendonitis; Patellofemoral tracking dysfunction; Quadriceps tendonitis; Plica syndrome

Size	Measurement*	Product #
X-Small	13½" - 15½"	NE7717-71
Small	15½" - 18"	NE7717-72
Medium	18" - 20½"	NE7717-73
Large	20½" - 23"	NE7717-74
X-Large	23" - 25½"	NE7717-75
XX-Large	25½" - 28"	NE7717-76
XXX-Large	28" - 30½"	NE7717-77

\*Measure circumference 6" above mid-patella



### Universal Knee Support

- 1/8" neoprene construction provides warmth, compression and support
- Anterior wrap around strapping above and below knee helps prevent migration
- Universal adult and pediatric sizes available

**Indications:** Grade I collateral ligament sprain; Patellar subluxation; Chondromalacia; Patellar tendonitis; Patellofemoral tracking dysfunction; Quadriceps tendonitis; Plica syndrome

Size	Measurement*	Product #
Universal	up to 25"	NE7710-70
Pediatric	up to 12"	NE7710-71

\*Measure circumference 6" above mid-patella



### Open Patella Knee Support

- 1/8" neoprene construction provides warmth, compression and support
- Also available in breathable Tri-tex™ construction
- Open patella for patient comfort

**Indications:** Grade I collateral ligament sprain; Knee sprains and strains; Osteoarthritis; Mild joint effusion; Baker's cyst; Bursitis; Tendonitis

Size	Measurement*	Neoprene	Tri-tex™
X-Small	13½" - 15½"	NE7702-71	14811004
Small	15½" - 18"	NE7702-72	14811005
Medium	18" - 20½"	NE7702-73	14811006
Large	20½" - 23"	NE7702-74	14811007
X-Large	23" - 25½"	NE7702-75	14811008
XX-Large	25½" - 28"	NE7702-76	14811009
XXX-Large	28" - 30½"	NE7702-77	14811010

\*Measure circumference 6" above mid-patella





### Closed Patella Knee Support

- 1/8" neoprene construction provides compression and support

**Indications:** Grade I collateral ligament sprain; Knee sprains and strains; Osteoarthritis; Mild joint effusion; Baker's cyst; Bursitis; Tendonitis

Size	Measurement*	Product #
X-Small	13½" - 15½"	NE7701-71
Small	15½" - 18"	NE7701-72
Medium	18" - 20½"	NE7701-73
Large	20½" - 23"	NE7701-74
X-Large	23" - 25½"	NE7701-75
XX-Large	25½" - 28"	NE7701-76
XXX-Large	28" - 30½"	NE7701-77

\*Measure circumference 6" above mid-patella



### Visco Elastic Knee Support

- Visco elastic construction with four-way stretch for maximum compression
- Silicone buttress and spiral stays
- Closed patella design

**Indications:** Grade I collateral ligament sprain; Knee sprains and strains; Osteoarthritis; Mild joint effusion; Baker's cyst; Bursitis; Tendonitis

Size	Measurement*	Product #
Small	15½" - 18"	14801005
Medium	18" - 20½"	14801006
Large	20½" - 23"	14801007
X-Large	23" - 25½"	14801008
XX-Large	25½" - 28"	14801009

\*Measure circumference 6" above mid-patella

### Elastic Knee Support

- Pull-up cotton elastic design
- Provides snug fit for maximum compression
- Available in open and closed patella styles

**Indications:** Grade I collateral ligament sprain; Knee sprains and strains; Osteoarthritis; Mild joint effusion; Baker’s cyst; Bursitis; Tendonitis



Size	Measurement*	Closed Patella	Open Patella
Small	12" - 15"	7042-01	7043-01
Medium	15" - 18"	7042-02	7043-02
Large	18" - 21"	7042-03	7043-03
X-Large	21" - 24"	7042-04	7043-04
XX-Large	24" - 27"	7042-05	7043-05

\*Measure circumference 6" above mid-patella



HCPCS CODE: L1830

### Deluxe Tri-Panel Knee Immobilizer

- Constructed of foam body with durable blue canvas panels
- T-bar stays provide optimal strength
- Contoured posterior stays for correct anatomical fit
- Adjustable medial and lateral panels allow for universal sizing
- Patella strap assists with application
- Also available in black foam construction

**Indications:** Mild to severe knee injuries; Post-operative immobilization; Grade II and III collateral ligament sprain; Patellar dislocations; Osteochondral fractures

Length	Canvas	Black Foam
12"	1120917	BF1120917
14"	1140917	—
16"	1160917	BF1160917
19"	1190917	BF1190917
22"	1220917	BF1220917
24"	1240917	BF1240917

\*Universal size fits thigh circumference 12" - 24"



HCPCS CODE: L1830

### Superlite Tri-Panel Knee Immobilizer

- Constructed of foam body with white perforated canvas panels
- T-bars stays provide optimal strength
- Contoured posterior stays for correct anatomical fit
- Adjustable medial and lateral panels allow for universal sizing
- Patella strap assists with application

**Indications:** Mild to severe knee injuries; Post-operative immobilization; Grade II and III collateral ligament sprain; Patellar dislocations; Osteochondral fractures

Length	Product #
12"	7091-50
16"	7091-56
19"	7091-51
22"	7091-55
24"	7091-52
26"	7091-57
28"	7091-58

\*Universal size fits thigh circumference 12" - 24"

### Foam Tri-Panel Knee Immobilizer

- Constructed of blue perforated foam for patient comfort
- T-bar stays provide optimal strength
- Contoured posterior stays for correct anatomical fit
- Adjustable medial and lateral panels allow for universal sizing
- Trimmable foam allows for a more customized fit

**Indications:** Mild to severe knee injuries; Post-operative immobilization; Grade II and III collateral ligament sprain; Patellar dislocations; Osteochondral fractures

Length	Product #
12"	7091-03
16"	7091-04
19"	7091-05
22"	7091-06
24"	7091-07
26"	7091-08

\*Universal size fits thigh circumference 12" - 24"



HCPCS CODE: L1830

### Bariatric Foam Tri-Panel Knee Immobilizer

- Perforated foam construction for patient comfort and breathability
- T-bar stays provide optimal strength
- Contoured posterior stays for correct anatomical fit
- Adjustable medial and lateral panels allow for universal fit
- Trimmable foam allows for a more customized fit

**Indications:** Mild to severe knee injuries; Post-operative immobilization; Grade II and III collateral ligament sprain; Patellar dislocations; Osteochondral fractures

Length	Product #
19"	7091-14
22"	7091-15
24"	7091-16
26"	7091-17
28"	7091-18

\*Universal size fits thigh circumference up to 40"



HCPCS CODE: L1830



HCPCS CODE: L1830

### Tri-Panel Knee Immobilizer

- Constructed of black foam body with durable poly panels
- T-bar stays provide optimal strength
- Contoured posterior stays for correct anatomical fit
- Adjustable medial and lateral panels allow for universal sizing
- Patella strap assists with application

**Indications:** Mild to severe knee injuries; Post-operative immobilization; Grade II and III collateral ligament sprain; Patellar dislocations; Osteochondral fractures

Length	Product #
12"	A141000
16"	A142000
19"	A143000
22"	A144000
24"	A145000
26"	A146000

\*Universal size fits thigh circumference 12" - 24"



HCPCS CODE: L1830

### Knee Immobilizer w/ Elastic Straps

- Perforated foam construction for patient comfort and breathability
- T-bar stays provide optimal strength
- Adjustable medial and lateral stays allow for universal sizing
- Elastic straps provide compression helping to reduce edema

**Indications:** Mild to severe knee injuries; Post-operative immobilization; Grade II and III collateral ligament sprain; Patellar dislocations; Osteochondral fractures

Length	Blue	Black
12"	—	BF7072-01
16"	7072-02	BF7072-02
20"	7072-03	BF7072-03
22"	7072-04	BF7072-04
24"	7072-05	BF7072-05
26"	—	BF7072-06

\*Universal size fits thigh circumference 12" - 24"

### Cutaway Knee Immobilizer w/ Patella Strap

- Perforated foam construction for patient comfort and breathability
- Available with or without T-bar stays
- Contoured posterior stays for correct anatomical fit
- Adjustable medial and lateral stays allow for universal sizing
- Elastic patella strap helps reduce knee edema
- Also available in black foam construction (w/o T-bars)

**Indications:** Mild to severe knee injuries; Post-operative immobilization; Grade II and III collateral ligament sprain; Patellar dislocations; Osteochondral fractures

Length	w/ T-bars	w/o T-bars
13"	—	9307-01
14"	7066-14	—
16"	7066-16	—
18"	7066-18	9307-02
20"	7066-20	9307-03
22"	7066-22	9307-06
24"	7066-24	9307-04
26"	7066-26	—
28"	7066-28	9307-05

\*Universal size fits thigh circumference 12" - 24"



HCPCS CODE: L1830

### Cutaway Knee Immobilizer

- Perforated foam construction for patient comfort and breathability
- T-bar stays provide optimal strength
- Available with straight or contoured posterior stays
- Adjustable medial and lateral stays allow for universal sizing
- Quick-fit tabs assist with application

**Indications:** Mild to severe knee injuries; Post-operative immobilization; Grade II and III collateral ligament sprain; Patellar dislocations; Osteochondral fractures

Length	Straight	Contoured
12"	7041-01	7041-11
16"	7041-02	7041-22
20"	7041-03	7041-33
24"	7041-04	7041-44
28"	7041-05	7041-55

\*Universal size fits thigh circumference 12" - 24"



HCPCS CODE: L1830



HCPCS CODE: L1830

### Cutaway Knee Immobilizer

- Perforated foam construction for patient comfort and breathability
- T-bar stays provide optimal strength
- Adjustable medial and lateral stays allow for universal sizing
- Loop lock straps affix posterior to encircle entire leg
- Also available in black foam construction

**Indications:** Mild to severe knee injuries; Post-operative immobilization; Grade II and III collateral ligament sprain; Patellar dislocations; Osteochondral fractures

Length	T-bars	Contoured	Black Foam
12"	—	—	BF4433-12
16"	—	4433-10	BF4433-16
19"	4433-11	4433-01	BF4433-19
22"	4433-22	4433-05	BF4433-22
24"	4433-33	4433-03	BF4433-24
26"	—	—	BF4433-26

\*Universal size fits thigh circumference 12" - 24"



HCPCS CODE: L1830

### Black Cutaway Knee Immobilizer

- Constructed of lightweight black foam
- T-bar stays provide optimal strength
- Adjustable medial and lateral stays allow for universal sizing

**Indications:** Mild to severe knee injuries; Post-operative immobilization; Grade II and III collateral ligament sprain; Patellar dislocations; Osteochondral fractures

Length	Product #
12"	A140001
16"	A147000
19"	A148000
22"	A149000
24"	A140000

\*Universal size fits thigh circumference 12" - 24"



### Sized Canvas Knee Immobilizer

- Constructed of durable blue canvas
- T-bar stays provide optimal strength
- Contoured posterior stays for correct anatomical fit
- Alternating web straps with loop lock closure

**Indications:** Mild to severe knee injuries; Post-operative immobilization; Grade II and III collateral ligament sprain; Patellar dislocations; Osteochondral fractures

Size	Measurement*	12"	16"	19"	22"	24"
Small	14" - 16"	1010127	1010167	1010197	1010227	1010247
Medium	16" - 18"	1020127	1020167	1020197	1020227	1020247
Large	18" - 20"	1030127	1030167	1030197	1030227	1030247
X-Large	20" - 22"	1040127	1040167	1040197	1040227	1040247
XX-Large	22" - 24"	—	—	1050197	1050227	1050247

\*Measure thigh circumference 6" above mid-patella



HCPCS CODE: L1830

### Sized Foam Knee Immobilizer

- Perforated foam construction for patient comfort and breathability
- T-bar stays provide optimal strength
- Contoured posterior stays for correct anatomical fit
- Alternating straps with loop lock closure provide desired compression

**Indications:** Mild to severe knee injuries; Post-operative immobilization; Grade II and III collateral ligament sprain; Patellar dislocations; Osteochondral fractures

Size	Measurement*	16"	20"	22"	24"
Small	14" - 16"	4461-02	4462-02	4464-02	4463-02
Medium	16" - 18"	4461-03	4462-03	4464-03	4463-03
Large	18" - 20"	4461-04	4462-04	4464-04	4463-04
X-Large	20" - 22"	4461-05	4462-05	4464-05	4463-05
XX-Large	22" - 24"	—	4462-06	—	—

\*Measure thigh circumference 6" above mid-patella



HCPCS CODE: L1830



HCPCS CODE: L1830

### Pediatric Black Foam Knee Immobilizer

- Constructed of black foam with tricot liner
- T-bar stays provide optimal strength
- Contoured posterior stays for correct anatomical fit
- Alternating straps with loop lock closure provide desired compression

**Indications:** Mild to severe knee injuries; Post-operative immobilization; Grade II and III collateral ligament sprain; Patellar dislocations; Osteochondral fractures

Size	Measurement*	10"
Pediatric Small	8" - 10"	14970005
Pediatric Medium	10" - 12"	14970006
Pediatric Large	12" - 14"	14970007

\*Measure thigh circumference 6" above mid-patella



HCPCS CODE: L1830

### Sized Knee Immobilizer

- Constructed of durable poly foam
- T-bar stays provide optimal strength
- Contoured posterior stays for correct anatomical fit
- Alternating straps with loop lock closure provide desired compression

**Indications:** Mild to severe knee injuries; Post-operative immobilization; Grade II and III collateral ligament sprain; Patellar dislocations; Osteochondral fractures

Size	Measurement*	16"	20"	22"	24"
Small	14" - 16"	A146005	A142005	A143005	A144005
Medium	16" - 18"	A146006	A142006	A143006	A144006
Large	18" - 20"	A146007	A142007	A143007	A144007
X-Large	20" - 22"	A146008	A142008	A143008	A144008
XX-Large	22" - 24"	A146009	A142009	—	A144009

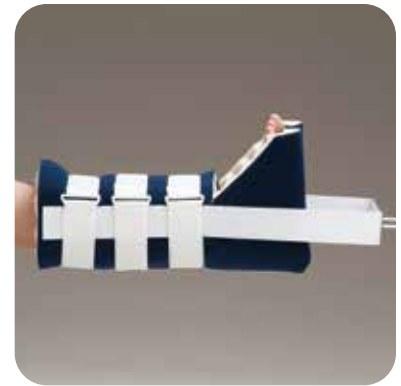
\*Measure thigh circumference 6" above mid-patella

### Total Universal Buck's Traction Boot

- Constructed of convoluted foam and laminated hook receivable material
- Medial and lateral stays provide stability and are removable for ease of application
- Full-foot design helps prevent foot drop
- Trimmable foam body and loop lock closure for more customized fit
- Spreader bar attached

**Indications:** Hip fractures; Hip dislocations; Femur fractures

Size	Product #
Universal	8140-00



HCPSC CODE: E0870NU

### Full Foot Buck's Traction Boot

- Convoluted foam construction helps prevent migration
- Medial and lateral stays provide additional stability
- Full-foot design helps prevent foot drop
- 1" ventilation holes increase airflow
- Trimmable foam and loop lock closures
- Spreader bar attached

**Indications:** Hip fractures; Hip dislocations; Femur fractures

Size	Product #
Universal	8130-00
Pediatric	8106-01
Small	8106-03
Medium	8106-04
Large	8106-05
X-Large	8106-06



HCPSC CODE: E0870NU

### Universal Buck's Traction Boot

- Convoluted foam construction helps prevent migration
- Medial and lateral stays provide additional stability
- 1" ventilation holes increase airflow
- Trimmable foam body for more customized fit
- Universal size fits most patients
- Spreader bar attached

**Indications:** Hip fractures; Hip dislocations; Femur fractures

Size	Product #
Universal	8121-00



HCPSC CODE: E0870NU



HCPCS CODE: E0870NU

### Sized Buck's Traction Boot

- Non-convoluted foam construction helps reduce pressure points
- Medial and lateral stays provide additional stability
- 1" ventilation holes increase airflow
- Trimmable foam and loop lock closures
- Spreader bar attached

**Indications:** Hip fractures; Hip dislocations; Femur fractures

Size	Product #
Universal	8120-00
Pediatric	8105-01
X-Small	8105-02
Small	8105-03
Medium	8105-04
Large	8105-05
X-Large	8105-06



HCPCS CODE: E0870NU

### Buck's Traction Boot w/ Triangle Buckle

- Convoluted foam construction helps prevent migration
- Medial and lateral stays provide additional stability
- 1" ventilation holes increase airflow
- Trimmable foam and hook closures
- Traction cord attaches to triangle buckle

**Indications:** Hip fractures; Hip dislocations; Femur fractures

Size	Product #
Pediatric	19401
X-Small	19402
Small	19403
Medium	19404
Large	19405
X-Large	19406

### Foam Ankle Stirrup

- Open cell polyurethane foam provides a superior fit and has proven to be one of the most conforming and shock absorbing materials on the market
- Rigid medial and lateral shells minimize ankle rotation and inversion/eversion
- Elasticized stretch loop straps provide compression to help reduce edema
- Adjustable outside heel strap for maximum fit and comfort
- Low-profile design fits easily in shoe
- Universal right/left
- Available in each or 6/Case quantity

**Indications:** Acute and chronic ankle sprains; Osteoarthritis; Syndesmosis sprain

Size	Height	Each	Case
Standard	10"	AB2340-00	AB2340-06
Small	8½"	AB2341-00	AB2341-06



HCPCS CODE: L4350

### Air Ankle Stirrup

- Rigid medial and lateral shells minimize ankle rotation and inversion/eversion
- Air bladder allows for simple adjustment of air with inflation bulb
- Swivel straps allow even compression when applied in opposite directions
- Adjustable outside heel strap for maximum fit and comfort
- Low-profile design fits easily in shoe
- Universal right/left

**Indications:** Acute and chronic ankle sprains; Osteoarthritis; Syndesmosis sprain

Size	Height	Product #
Standard	10"	AB2360-00
Small	8½"	AB2361-00
Pediatric	6"	AB2362-00



HCPCS CODE: L4350



HCPCS CODE: L4350

### Air/Gel Ankle Stirrup

- Rigid medial and lateral shells minimize ankle rotation and inversion/eversion
- Air/gel bladder can be placed in freezer for cold therapy
- Swivel straps allow even compression when applied in opposite directions
- Adjustable outside heel strap for maximum fit and comfort
- Low-profile design fits easily in shoe
- Universal right/left

**Indications:** Acute and chronic ankle sprains; Osteoarthritis; Syndesmosis sprain

Size	Height	Product #
Standard	10"	AB2350-00
Small	8½"	AB2351-00



HCPCS CODE: L4350

### Air Ankle Stirrup Kit

- Kit features: Standard air ankle stirrup, ice pack, elastic bandage and exercise band
- Self care guide included to inform and aid patient during rehabilitation

**Indications:** Acute and chronic ankle sprains; Osteoarthritis; Syndesmosis sprain

Size	Product #
Ankle Sprain Kit	SC1000-00

### Element® Sport Ankle Brace

Powered by the BOA® Fit System

- Patented heel control strapping system holds the calcaneus under the talus controlling subtalar inversion and talar rotation
- Powered by the BOA® Fit System for a secure fit that is easy for the patient to apply
- Dial allows on-the-fly adjustment
- Rigid medial and lateral uprights help prevent abnormal eversion and inversion
- Functional hinge design allows for utilization of the brace prophylactically
- Low-profile design for a comfortable fit inside of shoes promoting patient compliance

**Indications:** Acute and chronic ankle sprains; Chronic ankle instability; Posterior tibial tendonitis; Peroneal tendonitis; Osteoarthritis

Size	Male Shoe Size	Female Shoe Size	Right	Left
Small	< 8	< 9½	AB2150-10	AB2150-16
Medium	8 - 12	9½ - 13½	AB2150-12	AB2150-18
Large	12 +	13½ +	AB2150-14	AB2150-20



HCPCS CODE: L1902

### Element® Sports Ankle Brace

- Patented heel control strapping system holds the calcaneus under the talus controlling subtalar inversion and talar rotation
- Rigid medial and lateral uprights help prevent abnormal eversion and inversion
- Functional hinge design allows for utilization of the brace prophylactically
- User friendly dynamic closure strap provides circumferential compression for an intimate fit
- Low-profile design helps promote patient compliance
- Low-profile foot plate for a comfortable fit inside of shoes

**Indications:** Chronic ankle instability; Prophylactic talocrural support; Prevention or treatment of acute ankle sprains; Subtalar joint sprain; Syndesmosis sprain

Size	Male Shoe Size	Female Shoe Size	Right	Left
Small	< 8	< 9½	AB2140-10	AB2140-16
Medium	8 - 12	9½ - 13½	AB2140-12	AB2140-18
Large	12 +	13½ +	AB2140-14	AB2140-20



HCPCS CODE: L1902



HCPCS CODE: L1902

### DeRoyal® Sports Orthosis

Powered by the BOA® Fit System

- Powered by the BOA® Fit System for a secure fit
- Dial allows for micro-adjustability and on-the-fly adjustment
- Low friction lacing allows for even closure and close fit
- Available with removable medial and lateral plastic stays to provide rigid support
- Constructed of durable nylon for long lasting wear
- Figure-8 strapping mimics athletic taping
- Low-profile design allows for use in athletic shoe
- No seam under foot
- Universal right/left

**Indications:** Chronic ankle instability; Prophylactic talocrural support; Prevention or treatment of acute ankle sprains; Subtalar joint sprain; Syndesmosis sprain

Size	Ankle Circumference*	w/o Stays	w/ Stays
X-Small	10" - 11"	AB3000-10	AB3100-10
Small	11" - 12"	AB3000-12	AB3100-12
Medium	12" - 13"	AB3000-14	AB3100-14
Large	13" - 14"	AB3000-16	AB3100-16
X-Large	14" - 15"	AB3000-18	AB3100-18
XX-Large	15" - 16"	AB3000-20	AB3100-20

\*Measure circumference from the base of heel around the ankle



HCPCS CODE: L1902

### DeRoyal® Sports Orthosis

- Constructed of durable nylon for long lasting wear
- Figure-8 strapping mimics athletic taping
- Lace-up design for a secure fit
- Elastic cuff closure for added support and compression
- Low-profile design allows for use in athletic shoe
- Universal right/left

**Indications:** Chronic ankle instability; Prophylactic talocrural support; Prevention or treatment of acute ankle sprains; Subtalar joint sprain; Syndesmosis sprain

Size	Ankle Circumference*	Product #
X-Small	10" - 11"	AB2900-10
Small	11" - 12"	AB2900-12
Medium	12" - 13"	AB2900-14
Large	13" - 14"	AB2900-16
X-Large	14" - 15"	AB2900-18
XX-Large	15" - 16"	AB2900-20

\*Measure circumference from the base of heel around the ankle



### DeRoyal® Sports Ankle Brace

- Constructed of durable nylon for long lasting wear
- Figure-8 strapping configuration, in conjunction with medial to lateral stirrup straps, places foot in slightly everted position for maximum ankle stability
- Removable medial and lateral plastic stays with malleoli cut-out provides comfort and support
- Lace-up design for a secure fit
- Low-profile design allows use in athletic shoe

**Indications:** Chronic ankle instability; Prophylactic talocrural support; Prevention or treatment of acute ankle sprains; Subtalar joint sprain; Syndesmosis sprain

Size	Male Shoe Size	Female Shoe Size	Right	Left
X-Small	4 - 6	5 - 7	AB2801-20	AB2801-10
Small	6½ - 8	7½ - 9	AB2801-22	AB2801-12
Medium	8½ - 10	9½ - 11	AB2801-24	AB2801-14
Large	10½ - 12	11½ - 13	AB2801-26	AB2801-16
X-Large	12½ +	13½ +	AB2801-28	AB2801-18



HCPCS CODE: L1902

### DeRoyal® Sports Ankle Brace 2

- Constructed of durable nylon for long lasting wear
- Universal stabilization strap forces ankle into inversion or eversion
- Cuff closure for added support and compression
- Lace-up design for secure fit and primary stabilization
- Low-profile design allows use in athletic shoe
- Universal right/left

**Indications:** Chronic ankle instability; Prophylactic talocrural support; Prevention or treatment of acute ankle sprains; Subtalar joint sprain; Syndesmosis sprain

Size	Ankle Circumference*	Product #
X-Small	10" - 11"	15600004
Small	11" - 12"	15600005
Medium	12" - 13"	15600006
Large	13" - 14"	15600007
X-Large	14" - 15"	15600008
XX-Large	15" - 16"	15600009

\*Measure circumference from the base of heel around the ankle



HCPCS CODE: L1902



HCPCS CODE: L1902

## Canvas Lace-Up Ankle Brace

- Constructed of durable canvas with flannel lining
- Contoured design for best anatomical fit
- Removable medial and lateral metal stays provide stability
- Lace-up design for a secure fit
- Universal right/left

**Indications:** Acute and chronic ankle sprains; Ankle rehabilitation

<b>Size</b>	<b>Ankle Circumference*</b>	<b>Product #</b>
Small	7" - 8"	8761-01
Medium	8" - 10"	8761-02
Large	10" - 12"	8761-03
X-Large	12" - 14"	8761-04

\*Measure circumference from the base of heel around the ankle

### Figure-8 Wrap Ankle Support

- Constructed of a durable, breathable mesh sock material
- Elastic strap provides compression and edema control
- Figure-8 wrap with hook and loop closure provides additional support
- Universal right/left

**Indications:** Mild ankle sprains and strains; Ankle edema; Peroneal and anterior tibialis tendonitis; Osteoarthritis of the talocrural and subtalar joints

Size	Ankle Circumference*	Product #
Small	7" - 8"	4016-01
Medium	8" - 10"	4016-02
Large	10" - 12"	4016-03
X-Large	12" - 14"	4016-04

\*Measure circumference from the base of heel around the ankle



### Neoprene Ankle Support

- 1/8" neoprene construction provides warmth, compression and support
- Open heel, pull-on design
- Universal right/left

**Indications:** Mild ankle sprains and strains; Chronic ankle instability; Ankle edema; Osteoarthritis; Joint effusion

Size	Male Shoe Size	Female Shoe Size	Product #
Small	4½ - 6	5½ - 7	NE7732-72
Medium	6½ - 8	7½ - 9	NE7732-73
Large	8½ - 10	9½ - 11	NE7732-74
X-Large	10½ - 12	11½ - 13	NE7732-75
XX-Large	12½ +	13½ +	NE7732-76





### Elastic Ankle Sleeve

- Pull-on cotton elastic design
- Provides snug fit for maximum comfort and compression
- Low-profile design fits easily in shoe
- Universal right/left

**Indications:** Mild ankle sprains and strains; Ankle edema; Osteoarthritis of the talocrural and subtalar joints

Size	Ankle Circumference*	Product #
Small	7" - 8"	4004-01
Medium	8" - 10"	4004-02
Large	10" - 12"	4004-03
X-Large	12" - 14"	4004-04

\*Measure circumference from the base of heel around the ankle



### Closed Heel Elastic Ankle Sleeve

- Closed heel, elastic construction
- Provides snug fit for maximum comfort and compression
- Pull-on design for ease of application
- Low-profile design fits easily in shoe
- Universal right/left

**Indications:** Mild ankle sprains and strains; Ankle edema; Osteoarthritis of the talocrural and subtalar joints

Size	Ankle Circumference*	Product #
Small	7" - 8"	4005-01
Medium	8" - 10"	4005-02
Large	10" - 12"	4005-03
X-Large	12" - 14"	4005-04

\*Measure circumference from the base of heel around the ankle

### Deluxe Ankle Foot Orthosis

- Closed heel support provides additional security
- Can be modified with heat gun and trimmed for customized fit
- Hook and loop closure for easy application
- Low-profile design fits in shoe
- Available in right/left design for best fit

**Indications:** Patients suffering from neurological or orthopedic conditions; Lower leg instabilities

Size	Male Shoe Size	Female Shoe Size	Right	Left
Small	6 - 7½	7½ - 9	AF1001-01	AF1001-04
Medium	8 - 9 ½	9½ - 11	AF1001-02	AF1001-05
Large	10 - 11½	11½ - 13	AF1001-03	AF1001-06
X-Large	12 +	13½ +	AF1001-07	AF1001-08



HCPCS CODE: L1930

### Ankle Foot Orthosis

- Open back and heel design
- Can be modified with heat gun and trimmed for customized fit
- Hook and loop closure for easy application
- Low-profile design fits easily in shoe
- Universal in size

**Indications:** Patients suffering from neurological or orthopedic conditions; Lower leg instabilities

Description	Male	Female
Right	AF1000-01	AF1000-03
Left	AF1000-02	AF1000-04



HCPCS CODE: L1930

# Foot/Ankle

## Night Splints/Heel Cups



HCPCS CODE: L4397

### DeRoyal® Night Splint

- Dorsiflexion design applies stretch for effective pain relief
- Lightweight and low-profile design for patient comfort
- Adjustable straps to vary amount of stretch
- Removable foam liner for laundering
- Optional foam wedges provided for additional stretch
- Not intended to be worn during ambulation or be weight bearing

**Indications:** Plantar fasciitis; Achilles tendonitis; Tendonosis

Size	Male Shoe Size	Female Shoe Size	Product #
Small	4 - 6	5 - 7	NS2000-10
Medium	6½ - 9	7½ - 10	NS2000-12
Large	9½ +	10½ +	NS2000-14



HCPCS CODE: L4397

### Dorsal Night Splint

- Thermoplastic design holds foot in 90° neutral position
- Neoprene straps with hook and loop closure
- Plastic free bottom
- Low-profile design allows for a cooler, more comfortable fit

**Indications:** Plantar fasciitis; Achilles tendonitis; Tendonosis

Size	Male Shoe Size	Female Shoe Size	Product #
Small/Medium	4 - 9	5 - 10	NS2000-20
Large/X-Large	9½ +	10½ +	NS2000-21



HCPCS CODE: L3170

### Silicone Heel Cups

- Constructed of medical grade silicone for long-lasting support and comfort
- Soft blue spot helps relieve heel strike fatigue and discomfort through shock absorption
- Packaged 1/Pair

**Indications:** Heel spurs; Bruises; Callosities; Plantar fasciitis and apophyseal injuries; Retrocalcaneal bursitis; Fat pad atrophy

Size	Product #
Small	HC2000-10
Medium	HC2000-12
Large	HC2000-14

### Full Shell Walker 2

- Built-in medial and lateral air pumps allow easy operation and instant air bladder control
- Air bladders accommodate swelling and bulky dressings
- Wide foot bed accommodates varying patient foot anatomies
- Textured tread, non-skid sole provides maximum shock absorption and grip
- Rocker bottom helps promote natural rolling gait
- Unique adjustable toe guard for increased protection
- Additional pads included for extra comfort where needed

**Indications:** Moderate to severe ankle sprains and strains; Stable foot and/or ankle fractures; Syndesmosis sprain; Post ORIF; Achilles tendonitis

Size	Male Shoe Size	Female Shoe Size	Standard	Low-Top
X-Small	up to 4	up to 5	15500041	15500046
Small	4 - 7	5 - 8	15500042	15500047
Medium	7 - 10	8 - 11	15500043	15500048
Large	10 - 13	11 - 15	15500044	15500049
X-Large	13 +	15 +	15500045	15500050



HCPCS CODE: L4361

### Inline Pneumatic Walker 2

- High quality rigid outer skeleton for superior protection
- Dense foam liner to provide comfort and support
- Shock absorbing embedded sole tread improves patient comfort and helps prevent slips
- Rocker bottom helps promote natural rolling gait
- Plastic uprights help reduce ankle rotation and range of motion
- Large air bladder creates a larger surface for contact pressure to help control swelling and ensure a snug, comfortable fit

**Indications:** Moderate to severe ankle sprains and strains; Stable foot and/or ankle fractures; Syndesmosis sprain; Post ORIF; Achilles tendonitis

Size	Male Shoe Size	Female Shoe Size	Standard	Low-Top
X-Small	up to 4½	up to 5½	15500031	15500036
Small	4½ - 7½	5½ - 8	15500032	15500037
Medium	7½ - 10½	8 - 11½	15500033	15500038
Large	10½ - 12½	11½ - 13½	15500034	15500039
X-Large	12½ +	13½ +	15500035	15500040



HCPCS CODE: L4361



HCPCS CODE: L4361

### Pacesetter™ Air Walker

- Inflatable pump design for compression and stabilization
- Unique non-welded air bladder reduces chance of over-inflation to the point of bursting or tearing
- Wide foot plate for patient comfort and stability
- Rocker bottom helps promote natural rolling gait
- Heel strap helps prevent foot migration
- Offered in both standard and low-top versions

**Indications:** Moderate to severe ankle sprains and strains; Stable foot and/or ankle fractures; Syndesmosis sprain; Post ORIF; Achilles tendonitis

Size	Male Shoe Size	Female Shoe Size	Standard Open Heel	Low-Top Open Heel
Youth	1 - 3 (child)	—	15780004	—
Small	3 - 6½	4 - 7½	15780005	15800005
Medium	7 - 8½	8 - 10	15780006	15800006
Large	9 - 10½	10½ - 12½	15780067	15800067
X-Large	11 - 16	13 +	15780008	15800008



HCPCS CODE: L4387

### Pacesetter™ II Walker

- Rocker bottom helps promote natural rolling gait
- Double laminated foam wrap is breathable to help prevent skin breakdown
- Wide foot plate for patient comfort and stability
- Available in open or closed heel design
- Open heel offered in both standard and low-top versions

**Indications:** Moderate to severe ankle sprains and strains; Stable foot and/or ankle fractures; Syndesmosis sprain; Post ORIF; Achilles tendonitis

Size	Male Shoe Size	Female Shoe Size	Standard Open Heel	Standard Closed Heel	Low-Top Open Heel
Small	3 - 6½	4 - 7½	CSG53510-A	CSG53550-A	CSG53520-A
Medium	7 - 8½	8 - 10	CSG53510-B	CSG53550-B	CSG53520-B
Large	9 - 10½	10½ - 12½	CSG53510-D	CSG53550-D	CSG53520-D
X-Large	11 - 16	13 +	CSG53510-C	CSG53550-C	CSG53520-C



### Grid Iron® XR Walker

- Features rigid metal uprights for maximum stability
- Low-profile rocker bottom sole helps promote natural gait
- Wide foot plate for patient comfort and stability
- Closed heel design helps prevent heel migration

**Indications:** Moderate to severe ankle sprains and strains; Stable foot and/or ankle fractures; Syndesmosis sprain; Post ORIF; Achilles tendonitis

Size	Male Shoe Size	Female Shoe Size	Product #
X-Small	up to 3½	up to 4½	15570004
Small	4 - 7	5 - 8½	15570005
Medium	7½ - 10	9 - 11	15570006
Large	10½ - 12	11½ - 13	15570007
X-Large	12½ +	13½ +	15570008



HCPCS CODE: L4387

### Tracker EX Walker

- Lightweight design for patient comfort
- Low-profile rocker bottom helps promote natural rolling gait
- Wide foot plate for patient comfort and stability
- Closed heel design helps prevent heel migration
- Extra long wrap provides full coverage
- Available in standard and low-top versions

**Indications:** Moderate to severe ankle sprains and strains; Stable foot and/or ankle fractures; Syndesmosis sprain; Post ORIF; Achilles tendonitis

Size	Male Shoe Size	Female Shoe Size	Standard	Low-Top
X-Small	up to 5½	up to 4½	15590002	15580002
Small	6 - 8½	5 - 8½	15590005	15580005
Medium	9 - 10½	9 - 11½	15590006	15580006
Large	11 - 13	12 - 13½	15590067	15580067
X-Large	13½ +	14 +	15590008	15580008



HCPCS CODE: L4387



HCPCS CODE: L4387

### One-Piece Samson Style Walker

- Low-profile anatomical design promotes natural rolling gait
- Two layer memory foam inlay conforms to foot
- Adjustable straps for even compression
- Wrap material allows skin to breathe and helps to prevent skin breakdown
- Uprights manufactured from 100% recycled material
- Available in standard and low-top designs

**Indications:** Moderate to severe ankle sprains and strains; Stable foot and/or ankle fractures; Syndesmosis sprain; Post ORIF; Achilles tendonitis

Size	Male Shoe Size	Female Shoe Size	Standard	Low-Top
X-Small	up to 5	up to 6	SL8001-01	—
Small	5 - 7	6 - 8	SL8001-03	SL8001-33
Medium	7½ - 10	8½ - 11	SL8001-05	SL8001-35
Large	10½ - 12	11½ - 13	SL8001-07	SL8001-37
X-Large	12½ +	13½ +	SL8001-09	—



HCPCS CODE: L4387

### Three-D Lowest Profile Walker

- Extra low heel height helps prevent external hip rotation
- Tri-radiate sole helps promote natural rolling gait
- Offset uprights at the malleoli accommodate swelling
- Padded foam inlay for increased energy absorption
- Flat foot bed keeps foot in neutral position
- Criss-cross straps help eliminate forward foot migration

**Indications:** Moderate to severe ankle sprains and strains; Stable foot and/or ankle fractures; Syndesmosis sprain; Post ORIF; Achilles tendonitis

Size	Male Shoe Size	Female Shoe Size	Product #
X-Small	up to 5	up to 6	SL5002-01
Small	5 - 7	6 - 8	SL5002-03
Medium	7½ - 10	8½ - 11	SL5002-05
Large	10½ - 12	11½ - 13	SL5002-07
X-Large	12½ +	13½ +	SL5002-09

### Grid Iron® XR R.O.M. Walker

- Range of motion is adjustable from fixed to 45°
- Rigid metal uprights for maximum stability
- Low-profile rocker bottom sole helps promote natural gait
- Wide foot plate for patient comfort and stability
- Closed heel design helps prevent heel migration

**Indications:** Moderate to severe ankle sprains and strains; Stable foot and/or ankle fractures; Syndesmosis sprain; Post ORIF; Achilles tendonitis

Size	Male Shoe Size	Female Shoe Size	Product #
Small	4 - 7	5 - 8½	15510005
Medium	7½ - 10	9 - 11	15510006
Large	10½ - 12	11½ - 13	15510007
X-Large	12½ +	13½ +	15510008



HCPCS CODE: L4387

### Protective Sock

- Used when wearing a walker boot for skin protection
- Nylon material provides a thin barrier of added comfort
- Stretchy spandex allows for universal sizing
- Packaged 24/Case

**Indications:** Lower extremity protection while wearing walker boot

Size	Product #
Universal	15400001





HCPCS CODE: L3260

### Original Darby Shoe

- Semi-rigid metatarsal shank provides controlled forefoot motion
- Reinforced padded heel counter to help reduce slippage
- Padded upper for patient comfort
- Loop lock closure for easy application
- Universal right/left

**Indications:** Post-operative foot protection and support; Minor foot fractures

Size	Male Shoe Size	Product #	Female Shoe Size	Product #
Small	6 - 8	DS1014-10	4 - 6	DS1013-10
Medium	8½ - 10	DS1014-12	6½ - 8	DS1013-12
Large	10½ - 12	DS1014-14	8½ - 10	DS1013-14
X-Large	12½ - 14	DS1014-16	—	—
Pediatric	12 - 1 (Child)	DS1012-00	—	—



HCPCS CODE: L3260

### Aegis Post-Op Shoe

- Semi-rigid rubber sole for support
- Reinforced padded heel counter to help reduce slippage
- Padded upper for patient comfort
- Loop lock closure for easy application
- Universal right/left

**Indications:** Post-operative foot protection and support; Minor foot fractures

Size	Male Shoe Size	Product #	Female Shoe Size	Product #
Small	6 - 8	2044-01	4 - 6	2044-07
Medium	8½ - 10	2044-02	6½ - 8	2044-08
Large	10½ - 12	2044-03	8½ - 10	2044-09
X-Large	12½ - 14	2044-04	—	—



HCPCS CODE: L3260

### Post-Op Shoe

- Semi-rigid rubber sole for support
- Black nylon upper for comfort
- Loop lock closure for easy application
- Universal right/left

**Indications:** Post-operative foot protection and support; Minor foot fractures

Size	Male Shoe Size	Product #	Female Shoe Size	Product #
Small	6 - 8	A152305	4 - 6	A152405
Medium	8½ - 10	A152306	6½ - 8	A152406
Large	10½ - 12	A152307	8½ - 10	A152407
X-Large	12½ - 14	A152308	—	—

### Canvas Post-Op Shoe

- Rigid rubber sole provides controlled forefoot motion
- Canvas upper for durability
- Hook and loop closure
- Universal right/left

**Indications:** Post-operative foot protection and support; Minor foot fractures

Size	Male Shoe Size	Product #	Female Shoe Size	Product #
Small	6 - 8	2041-01	4 - 6	2041-07
Medium	8½ - 10	2041-02	6½ - 8	2041-08
Large	10½ - 12	2041-03	8½ - 10	2041-09
Pediatric	6 - 8 (Child)	2041-00	—	—



HCPCS CODE: L3260

### Deluxe Wooden Post-Op Shoe

- Rigid wood sole with rubber bottom for support
- Perforated suede upper for comfort and durability
- Available in hook and loop or lace up closure design
- Universal right/left

**Indications:** Post-operative foot protection and support; Minor foot fractures

Size	Male Shoe Size	Hook & Loop Closure	Lace Up Closure
Child	2 - 4½	2007-01	—
Small	5 - 6½	2007-02	2006-02
Medium	7 - 8½	2007-03	2006-03
Large	9 - 11	2007-04	2006-04
X-Large	11½ - 13	2007-05	—

Size	Female Shoe Size	Hook & Loop Closure	Lace Up Closure
Child	2 - 3½	2007-06	—
Small	4 - 6	2007-07	2006-07
Medium	6½ - 8	2007-08	2006-08
Large	8½ - 10	2007-09	2006-09
X-Large	10½ - 12	2007-10	—



HCPCS CODE: L3260



### Canvas Wooden Post-Op Shoe

- Rigid wood sole with rubber bottom for support
- Blue canvas upper
- Available in hook and loop or lace up closure design
- Universal right/left

**Indications:** Post-operative foot protection and support; Minor foot fractures



HCPCS CODE: L3260

Size	Male Shoe Size	Hook & Loop Closure	Lace Up Closure
Small	5 - 6½	2020-11	2020-01
Medium	7 - 8½	2020-12	2020-02
Large	9 - 11	2020-13	2020-03
X-Large	11½ - 13	2020-14	2020-04

Size	Female Shoe Size	Hook & Loop Closure	Lace Up Closure
Small	4 - 6	2021-11	2021-01
Medium	6½ - 8	2021-12	2021-02
Large	8½ - 10	2021-13	2021-03
X-Large	10½ - 12	2021-14	2021-04



HCPCS CODE: L3260

### Darco® All Purpose Boot

- Closed toe design provides all-season protection
- High top design and ankle strap help eliminate heel slippage
- Hook and loop closure for easy application
- Universal right/left

**Indications:** Post-operative foot protection and support; Minor foot fractures

Size	Male Shoe Size	Female Shoe Size	Product #
X-Small	3 - 4½	3 - 6½	2045-01
Small	5 - 6½	7 - 9½	2045-02
Medium	7 - 8½	10 - 12½	2045-03
Large	9 - 11	13 +	2045-04
X-Large	11½ - 14	—	2045-05

### Darco® MedSurg™ Shoe

- MetaShank™ protection provides rigid control under metatarsal heads
- Strapless forefoot closure expands to accommodate bulky dressings
- Square toe design serves as a bumper for additional protection
- Rocker sole reduces plantar pressure on forefoot and heel
- Ankle strap helps eliminate heel migration
- Universal right/left

**Indications:** Post-operative foot protection and support; Minor foot fractures

Size	Male Shoe Size	Product #	Female Shoe Size	Product #
Small	6 - 8	DS1016-10	4 - 6	DS1015-10
Medium	8½ - 10	DS1016-12	6½ - 8	DS1015-12
Large	10½ - 12	DS1016-14	8½ - 10	DS1015-14
X-Large	12½ - 14	DS1016-16	—	—



HCPCS CODE: L3260

### Darco® HeelWedge™ Shoe

- Shifts weight to mid and forefoot to promote faster healing
- Removable EVA insole allows customization for additional off-loading
- Square toe design serves as a bumper for additional protection
- Hook and loop closure for easy application
- Universal right/left

**Indications:** Post-operative foot protection and support; Minor foot fractures

Size	Male Shoe Size	Female Shoe Size	Product #
X-Small	—	4 - 7	HS2025-08
Small	6 - 8	7½ - 10	HS2025-10
Medium	8½ - 10	10½ - 13	HS2025-12
Large	10½ - 12	13½ +	HS2025-14
X-Large	12½ - 14	—	HS2025-16



HCPCS CODE: L3260

### Darco® OrthoWedge™ Shoe

- Reduces weight bearing pressure from the forefoot with 15° dorsi-angle
- Removable 10 mm insole allows customization for off-loading specific areas
- Square toe design serves as a bumper for additional protection
- Hook and loop closure for easy application
- Universal right/left

**Indications:** Post-operative foot protection and support; Minor foot fractures

Size	Male Shoe Size	Female Shoe Size	Product #
X-Small	—	4 - 7	HS1005-08
Small	6 - 8	7½ - 10	HS1005-10
Medium	8½ - 10	10½ - 13	HS1005-12
Large	10½ - 12	13½ +	HS1005-14
X-Large	12½ - 14	—	HS1005-16



HCPCS CODE: L3260



### Comfo-EZE™ Rocker Cast Shoe

- Constructed of durable navy canvas material
- Non-slip rubber sole for patient safety
- Rocker bottom promotes natural rolling gait
- Heel strap helps prevent foot migration
- Hook and loop closure for easy application

**Indications:** Lower extremity cast protection

Size	Length	Width	Product #
Pediatric	5½"	2½"	2004-00
X-Small	7"	3½"	2004-01
Small	8½"	4½"	2004-02
Medium	10"	4¾"	2004-03
Large	11½"	5¼"	2004-04
X-Large	13"	5½"	2004-05



### Canvas Cast Shoe

- Constructed of navy canvas material
- Padded canvas footbed for maximum comfort
- Non-slip rubber sole for patient safety
- Rocker bottom promotes natural rolling gait
- Heel strap helps prevent foot migration
- Hook and loop closure for easy application

**Indications:** Lower extremity cast protection

Size	Length	Width	Product #
Child	7"	3½"	2035-01
Small	8½"	4½"	2035-02
Medium	10"	4¾"	2035-03
Large	11½"	5¼"	2035-04
X-Large	13"	5½"	2035-05



### Black Canvas Cast Shoe

- Constructed of durable black canvas material
- Non-slip rubber sole for patient safety
- Rocker bottom promotes natural rolling gait
- Heel strap helps prevent foot migration
- Hook and loop closure for easy application

**Indications:** Lower extremity cast protection

Size	Length	Width	Product #
X-Small	7"	3½"	2033-01
Small	8½"	4½"	2033-02
Medium	11½"	5¼"	2033-03
Large	13"	5½"	2033-04



### Vinyl Cast Boot

- Constructed of durable vinyl material
- Rocker bottom promotes natural rolling gait
- Closed heel design to prevent foot migration
- Hook and loop closure for easy application

**Indications:** Lower extremity cast protection

Size	Length	Width	Product #
X-Small	7"	3½"	2027-01
Small	8½"	4½"	2027-02
Medium	10"	4¾"	2027-03
Large	11½"	5¼"	2027-04
X-Large	13"	5½"	2027-05



### Darco® SlimLine Cast Boot

- Square toe design serves as a bumper for protection and provides room for larger casts
- Stretchable upper material helps boot conform to cast allowing precise fit
- Rocker sole promotes natural rolling gait
- Padded insole to cushion patient's foot
- Strapless forefoot closure adjusts easily to cast size

**Indications:** Lower extremity cast protection

Size	Male Shoe Size	Female Shoe Size	Product #
X-Small	—	3 - 5	2039-01
Small	—	5½ - 8	2039-02
Medium	6 - 8	8½ - 10	2039-03
Large	8½ - 11	10½ - 13	2039-04
X-Large	11½ - 14	13+	2039-05

Size	Child Shoe Size	Product #
Child/Small	8 - 10½	2039-98
Child/Medium	11 - 1½	2039-99
Child/Large	2 - 4	2039-00





## Ankle Contracture Boot

- Static ankle foot orthosis used for positioning and pressure reduction
- Structured to completely suspend the heel
- Available in foam or fleece material with or without boot sole
- Softgoods completely cover splint leaving no exposed metal against skin
- “No strap” closures make it easy for patients to apply and remove the boot
- Anti-rotation bar, padded toe piece and mesh laundry bag included
- Accessories include hip abduction bar, boot sole and extra softgoods
- Universal right/left



HCPCS CODE: L4397

**Indications:** Hip rotation; Foot drop; Not recommended for severe plantar flexion contractures, open wounds, severe spasticity or thrombosis

Description	Foam	Fleece
Ankle Contracture Boot	4302	4307
Ankle Contracture Boot w/ Boot Sole	4301	4306
Ankle Contracture Boot w/ Boot Sole & Extra Liner	4300	—

Accessories	Product #
Hip Abduction Bar	4300/05AB
Boot Sole	4300/05WK

## Sizing Guide

Add letter to end of product # to indicate size

Measure calf circumference 8” up from bottom of heel

- A\* = 8” - 12”
- B = 10” - 14”
- C = 14” - 16”
- D = 16” - 21”
- E = 16” - 21”

Measure foot circumference around the widest part of foot

- A\* = 6” - 8”
- B = 7” - 9”
- C = 9” - 11”
- D = 11” - 13”
- E = 13” +

\*Size A available in 4301 style only

### Surgical Bra

- Constructed of Lycra® material
- Front hook and loop closure for easy application and access to dressings
- Wide, adjustable shoulder straps for maximum patient comfort
- Drain bulb loops

**Indications:** Post operative compression; Dressing holder

Size	Chest Measurement	Product #
Small	32" - 35"	M5001-S
Medium	36" - 39"	M5001-M
Large	40" - 43"	M5001-L
X-Large	44" - 47"	M5001-XL
XX-Large	48" - 51"	M5001-XXL
XXX-Large	52" - 55"	M5001-XXXL



### Trach Tube Holder

- Soft, foam holder secures most tracheostomy tubes
- Available with wide or narrow fasteners for secure fit (adult only)
- Adjustable to accommodate different neck circumferences
- 12/Case

**Indications:** Securement of tracheostomy tubes

Size	Fastener	Circumference	Product #
Adult	Narrow	up to 20"	M1151
Adult	Wide	up to 23"	M1150
Bariatric	Narrow	up to 30"	M1153



### Catheter Strap

- Soft, elastic construction for patient comfort
- Excellent substitute to messy, skin-irritating tape
- Hook and loop fasteners for easy application and placement
- Available in standard or extra long length

**Indications:** Securing indwelling urinary catheters; Catheter positioning

Size	Dimensions	Qty	Product #
Universal	22" L x 2" W	36/Case	M1133
Universal, X-Long	38" L x 2" W	24/Case	M1133-38





### Elbow Immobilizers

- Soft, perforated foam construction for patient comfort and breathability
- Rigid stays for optimal immobilization and strength
- Prevents flexion of arm to prevent pulling NG tubes, tracheostomy tubes or IV lines
- Elastic straps with hook closures for fast and accurate placement

**Indications:** Patients who disrupt medical treatment

Size	Dimensions	Qty	Product #
Adult	14" L x 17" W	1 Pair	M2035



### Pediatric Elbow Immobilizers

- Soft foam construction for patient comfort and breathability
- Rigid stays for optimal immobilization and strength
- Prevents flexion of arm to prevent pulling NG tubes, tracheostomy tubes or IV lines
- Hook closures for fast and accurate placement

**Indications:** Patients at risk of unplanned extubations; Patients who disrupt medical treatment

Size	Dimensions	Qty	Product #
Infant	5" L x 11" W	12 Eaches	M7035-XS
Child	7" L x 12" W	1 Pair	M7035-S
Child	7" L x 12" W	12 Eaches	M7035-SB
Child	9" L x 12" W	12 Eaches	M7035-M
Child	7½" L x 17" W	1 Pair	M7035-L
Child	11" L x 14½" W	12 Eaches	M7035-XL

### Cardiac Cushion

- Heart diagram printed on cushion
- Permanent marker included for bedside education purposes
- Cotton cover with polyester fill provides superior cushioning
- 10/Case

**Indications:** Post-cardiac surgery; Support during expectoration; Sternal support to aid in healing; Helps reduce pain when coughing and deep breathing

Size	Product #
Adult	M13-100
Pediatric	M13-500

\*Contact your local DeRoyal sales representative for custom logo information.



### Polyester Telemetry Pouch

- Durable polyester pouch with foam neck strap for patient comfort
- Hook receivable material for easy application and adjustability
- 50/Case

**Indications:** For securement of wearable telemetry units

Dimensions	Product #
6½" L x 5" W	M13-055



### Bed Rail Pads

- Foam padded, vinyl covered pads help prevent patient injury
- Vinyl covering wipes clean for easy disinfecting to help prevent cross-contamination
- Available in 2-piece (side rails only) or 4-piece set (side rails and head/footboards)
- Hook and loop closures (M3000D08) or elastic straps (M3002D09) for side rails and snap buttons for head/footboards for easy application and removal

**Indications:** Bed side rail injury and bed exit

Description	Side Rail Dimensions	Head/Footboard Dimensions	Product #
2 Piece Set	69" L x 12" H	—	M3000D08
2 Piece Set	32" L x 12" H	—	M3002D09
4 Piece Set	69" L x 12" H	32" L x 12" H	M3002D08





### Cervical Tension Pillow

- Constructed of soft foam with cotton cover
- Designed to help relieve pressure and tension on cervical spine
- Anatomically shaped to fit back of neck and head area

**Indications:** Cervical spine positioning and support; Neck tension relief

**Size**                      **Product #**  
 Universal                      9222-00



### Cerv-O-Rest Pillow

- Constructed of soft foam with cotton cover
- Compresses to fill in space behind neck when in a supine position

**Indications:** Cervical spine positioning and support

**Size**                      **Product #**  
 Universal                      9221-00



### Invalid Ring

- Soft, foam construction provides pressure-free comfort while sitting
- Ring available with (M10-070-C) or without (M10-070) cloth cover

**Indications:** Post-natal discomfort; Post-operative pain; Hemorrhoids; Bruised coccyx

Size	Dimensions			Product #
	A	B	C	
Universal	14½"	12"	2½"	M10-070-C
Universal w/o Cover	14½"	12"	2½"	M10-070

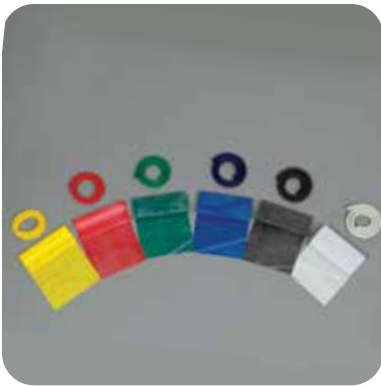


### Elastic Bandages

- Durable elastic construction
- Available in standard length (5 yds) and double length (10 yds)
- Packaged individually
- Non-sterile
- Available in hook and loop or clip closure

Size	Quantity	Clip Closure	Hook & Loop Closure
2 in x 5 yd	10 rolls/case	EB2	DEBV2
3 in x 5 yd	10 rolls/case	EB3	DEBV3
4 in x 5 yd	10 rolls/case	EB4	DEBV4
6 in x 5 yd	10 rolls/case	EB6	DEBV6
4 in x 10 yd	6 rolls/case	HEB4	—
6 in x 10 yd	6 rolls/case	HEB6	—





### Thera-Band® Exercise Bands & Tubing

- Top quality progressive exercise latex and latex-safe bands and tubing are lightweight, versatile and economical
- Endorsed by the American Physical Therapy Association (APTA)
- Six levels of resistance with latex bands and six levels with tubing

Level	Color	50 yd Latex Bands	50 yd Latex-Safe Bands	100 ft Tubing
Thin	Yellow	1502-50	1502-25	1512-100
Medium	Red	1503-50	1503-25	1513-100
Heavy	Green	1504-50	1504-25	1514-100
Extra Heavy	Blue	1505-50	1505-25	1515-100
Special Heavy	Black	1506-50	1506-25	1516-100
Super Heavy	Silver	1507-50	—	1517-100



### RepBand® Exercise Bands & Tubing

- Different levels of resistance available in both bands and cords
- Not made with natural rubber latex
- Odor and powder free

Level	Color	4 in x 50 yd REP Bands	100 ft REP Cords
1	Peach	1200-50	—
2	Orange	1201-50	1211-100
3	Green	1202-50	1212-100
4	Blue	1203-50	1213-100
5	Plum	1204-50	—



### Heavy-Duty Gait Belt

- Durable cotton construction
- ‘Tiger-tooth’ locking buckle for increased durability and maximum hold
- Available in three lengths
- Yellow version helps identify fall risk patients

**Indications:** Patient transfer; Ambulation assistance

Dimensions	Color	Qty	Product #
56" L x 2" W	Natural	1 Each	M5166
56" L x 2" W	Natural	40/Case	M5166-B
56" L x 2" W	Yellow	1 Each	M5166Y
70" L x 2" W	Yellow	1 Each	M5166Y-72
70" L x 2" W	Natural	1 Each	M5166-72
84" L x 2" W	Natural	1 Each	M5166-84

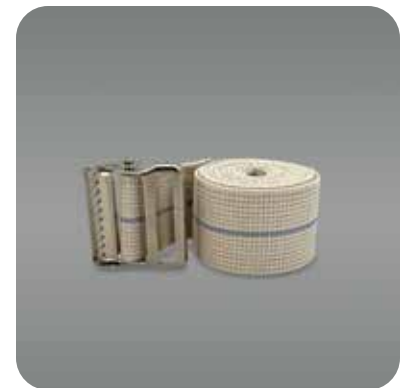


### Pastel Striped Gait Belt

- Durable cotton construction
- ‘Tiger-tooth’ locking buckle for increased durability and maximum hold
- Available in three lengths

**Indications:** Patient transfer; Ambulation assistance

Dimensions	Qty	Product #
56" L x 2" W	1 Each	M2616D01
60" L x 2" W	25/Case	M2616D25
70" L x 2" W	1 Each	M2616D72





M5168



M5164-YL

## Wipeable Gait Belt

- Poly-coated webbing construction can be wiped clean using hospital approved cleaning procedures
- Available in quick-release (M5164-YL) or airline style buckle for quick and easy application
- Available in two lengths
- Yellow version helps identify fall risk patients

**Indications:** Patient transfer; Ambulation assistance

Dimensions	Color	Buckle	Qty	Product #
60" L x 2" W	Black	Airline Style	1 Each	M5168
70" L x 2" W	Black	Airline Style	1 Each	M5164
60" L x 2" W	Yellow	Airline Style	1 Each	M5168-Y
70" L x 2" W	Yellow	Airline Style	1 Each	M5168-YL
70" L x 2" W	Yellow	Quick-Release	25/Case	M5164-YL



## Gait Belt w/ Quick-Release Buckle

- Durable cotton construction
- Quick-release buckle closure for quick and easy application
- Available in two lengths

**Indications:** Patient transfer; Ambulation assistance

Dimensions	Qty	Product #
54" L x 2" W	1 Each	M5167
70" L x 2" W	1 Each	M5165
54" L x 2" W	40/Case	M5167-B

### Leg Lifter

- Helps extend user's reach to assist in lifting one leg at a time
- Reinforced webbing with metal rod construction

**Product #**  
AD3005-00



### Sock Aids

- Used to apply socks or compression stockings for patients with limited dexterity or mobility
- Deluxe option constructed of flexible plastic core with nylon lining and two long loop handles for ease of use
- Formed option allows sock to be pulled onto the foot and features a braided cord handle and slip resistant pad

**Description**  
Deluxe  
Formed

**Product #**  
AD2004-DX  
AD2004-FM



### Shoe Horns

- Designed for those with limited dexterity or mobility
- Available in stainless steel or plastic construction

Description	Length	Product #
Stainless Steel	24"	AD2003-24
Stainless Steel	18"	AD2003-18
Plastic	16½"	AD2003-PL





### 26" Reacher

- Most popular model weighing only 190 grams
- Magnetic tip for picking up small metal objects

**Product #**  
AD3026-00



### 27" Reacher

- Rubber pad on upper jaw for a secure grip
- Magnetic tip for picking up small metal objects

**Product #**  
AD3006-27



### Bath Sponges

- Long handle bath sponges assist those with limited reach
- Handle can be reshaped with a heat gun if needed
- Sponge head is constructed of polyfoam material

**Description**  
Contoured  
Round

**Product #**  
HY1001-CT  
HY1001-RD

### Hip Kits

- Used to help avoid bending at the hip after surgery while performing self-care activities
- Designed to help individuals with reduced reaching and bending capabilities
- Kit increases independence and maintains a safe environment when performing dressing activities

#### Description

Includes: Plastic shoe horn, 26" reacher, sock aid, dressing aid round scrub sponge

#### Product #

AD9000-HK

Includes: Plastic shoe horn, 26" reacher, formed sock aid, round scrub sponge

AD9001-HK

Includes: Steel shoe horn, 26" reacher, formed sock aid, dressing aid, round scrub sponge

AD9002-HK



# Ambulatory Aids

## Crutches/Canes/Walkers



HCPCS CODE: E0114

### Crutches

- Constructed of lightweight, sturdy aluminum
- Push-button height adjustment
- Rubber tips for maximum surface traction
- Padded underarm rest and hand grips for patient comfort
- Packaged as one pair
- Not made with natural rubber latex

Size	Height	Product #
Pediatric	4' - 4'6"	3-700A-98
Short	4'8" - 5'2"	3-700A-01
Regular	5'2" - 5'10"	3-700A-02
Tall	5'10" - 6'6"	3-700A-03
Universal	4'6" - 6'6"	3-703A-00



HCPCS CODE: E0100

### Walking Canes

- Lightweight, sturdy aluminum construction
- Push-button height adjustable from 30" - 40"
- Rubber tip for maximum surface traction
- Padded hand grip for patient comfort
- Packaged 20/case

Size	Product #
Universal	CA298



HCPCS CODE: E0135

### Folding Walkers

- Lightweight, sturdy aluminum construction
- Push-button height adjustment
- Push-button folding for easy storage and transport
- Rubber tips for maximum surface traction
- Padded hand grips for patient comfort
- 5" wheels
- Two gliders for a smooth glide on most surfaces
- Packaged 2/case

Size	Product #
Universal	WLK02-W

### JetStream™ Cold/Hot Therapy Unit

- Patented Automatic Temperature Control (ATC™) measures and regulates temperature to provide therapeutic cold or hot therapy without manual adjustment
- Intuitive LED light lets user know when the unit is in therapeutic zone and advises when to add ice or hot water
- Portable system suitable for any medical setting or treatment at home
- Lightweight, low-profile design and Quick Start Guide are patient friendly
- Unit provides cold or hot therapy
- Therapy blankets optimize temperature distribution, insulation and comfort
- Blanket wraps increase insulation and ensure precise placement of blankets
- Knee/Shoulder combo unit comes with 3 detached straps (2 x 24" and 1 x 36") and can be used with either the knee or shoulder



HCPCS CODE: E0217 and E0218

**Indications:** Cold Therapy: Reduce pain or soft tissue swelling after trauma or surgery;  
Hot Therapy: Loosen or relax tight or sore muscles and/or joint stiffness prior to rehabilitation or exercise

Description	Product #	
JetStream™ Cold/Hot Therapy Unit	T700	
<b>Combo (Unit and Blanket)</b>	<b>Non-Sterile</b>	<b>Sterile</b>
Hip/Lumbar	T725NS	T725ST
Knee/Shoulder	T735NS	T735ST
Knee (w/attached straps)	T736NS	T736ST
Shoulder (w/attached straps)	T737NS	T737ST

#### Contraindications - WHEN NOT TO USE HOT THERAPY

**DO NOT** use hot therapy on patients with any of the following contraindications:

- History of heat injury or adverse reactions to hot therapy
- Incoherent due to sedation, anesthesia, coma or sleep
- Decreased skin sensitivity or localized circulation or wound healing problems
- Arteriosclerosis or atherosclerosis
- Abdomen of women who are pregnant
- Localized malignancy in treatment area
- Hypersensitivity to heat
- Local tissue infection, swelling or inflammation

#### Contraindications - WHEN NOT TO USE COLD THERAPY

**DO NOT** use cold therapy on patients with any of the following contraindications:

- History of cold injury, frostbite or adverse reactions to cold therapy
- Incoherent due to sedation, anesthesia, coma or sleep
- Decreased skin sensitivity or localized circulation or wound healing problems, including those caused by multiple surgical procedures
- Circulatory syndromes due to Raynaud’s disease, Buerger’s disease, peripheral vascular disease, vasospastic disorders, or hypercoagulable clotting disorders
- Hand/wrist or foot/ankle surgery exhibiting polyneuropathy
- Hypersensitivity to cold
- Children 12 and under
- Local tissue infection
- Diabetes

**If you have any of the above contraindications, ask your healthcare provider for alternate treatments.**

# Temperature Therapy

## Therapy Units



HCPCS CODE: E0218

## CoolJet® Cold Therapy Unit

- Automatic Temperature Control (ATC™) measures and regulates temperature to provide therapeutic cold therapy without manual adjustment
- Intuitive LED light lets user know when the unit is in therapeutic zone and advises when to add ice
- Portable system suitable for any medical setting or treatment at home
- Therapy blankets optimize temperature distribution, insulation and comfort
- Blanket wraps increase insulation and ensure precise placement of blankets
- Intuitive screw top opening
- Knee/Shoulder combo unit comes with 3 detached straps (2 x 24" and 1 x 36") and can be used with either the knee or shoulder

**Indications:** Cold Therapy: Reduce pain or soft tissue swelling after trauma or surgery

**Description**  
CoolJet® Cold Therapy Unit

**Product #**  
T800

**Combo (Unit and Blanket)**  
Hip/Lumbar  
Knee/Shoulder  
Knee (w/attached straps)  
Shoulder (w/attached straps)

<b>Non-Sterile</b>	<b>Sterile</b>
T825NS	T825ST
T835NS	T835ST
T836NS	T836ST
T837NS	T837ST

### Contraindications - WHEN NOT TO USE COLD THERAPY

DO NOT use cold therapy on patients with any of the following contraindications:

- History of cold injury, frostbite or adverse reactions to cold therapy
- Incoherent due to sedation, anesthesia, coma or sleep
- Decreased skin sensitivity or localized circulation or wound healing problems, including those caused by multiple surgical procedures
- Circulatory syndromes due to Raynaud's disease, Buerger's disease, peripheral vascular disease, vasopastic disorders, or hypercoagulable clotting disorders
- Hand/wrist or foot/ankle surgery exhibiting polyneuropathy
- Hypersensitivity to cold
- Children 12 and under
- Local tissue infection
- Diabetes

**If you have any of the above contraindications, ask your healthcare provider for alternate treatments.**



### Cold/Hot Tempertaure Therapy Blankets

- For use with DeRoyal® JetStream™ or CoolJet® Temperature Therapy units
- Therapy blankets optimize temperature distribution, insulation and comfort
- Removable Y-tabs on the straps allow for strap trimming for varying patient anatomy
- Available in sterile or non-sterile
- Universal right/left

**Indications:** Pain and soft tissue swelling as a result of surgery or trauma

#### Knee and Shoulder

- The Knee/Shoulder blankets can be used with either knee or shoulder



Description	Dimensions	Strap Length (Qty)	Non-Sterile	Sterile
Knee/Shoulder	10½" x 11"	24" detached (2) 36" detached (1)	T5035NS T5035NS-10*	T5035ST T5035ST-10 *
Knee/Shoulder Large	12½" x 11"	24" detached (2) 36" detached (1)	T5035NS-L T5035NS-L-10*	T5035ST-L T5035ST-L-10*
Knee w/ Attached Straps	10½" x 11"	24" attached (2)	T5036NS T5036NS-10*	T5036ST T5036ST-10*
Knee Large w/ Attached Straps	12½" x 11"	24" attached (2)	T5036NS-L T5036NS-L-10*	T5036ST-L T5036ST-L-10*
Shoulder w/ Attached Straps	10½" x 11"	36" attached (1) 12" attached (1)	T5037NS T5037NS-10*	T5037ST T5037ST-10*
Shoulder Large w/ Attached Straps	12½" x 11"	36" attached (1) 12" attached (1)	T5037NS-L T5037NS-L-10*	T5037ST-L T5037ST-L-10*

\*10 per/Case

#### Hip/Lumbar

Description	Dimensions	Strap Length (Qty)	Non-Sterile	Sterile
Hip/Lumbar	10½" x 11½"	24" detached (1) 36" detached (1)	T5025NS	T5025ST



#### Arm/Leg and Hand/Wrist

Description	Dimensions	Strap Length	Non-Sterile	Sterile
Arm/Leg	10" x 5"	—	T5015NS	T5015ST
Hand/Wrist	3½" x 5"	—	T5055NS	T5055ST



# Temperature Therapy

## Therapy Blankets & Wraps



### Cervical

Description	Dimensions	Strap Length	Non-Sterile	Sterile
Cervical	10" x 21"	—	T5075NS	T5075ST



### Foot/Ankle

Description	Dimensions	Strap Length	Non-Sterile	Sterile
Foot/Ankle	10" x 11½"	—	T5085NS	T5085ST



### Cold/Hot Temperature Therapy Blanket Wraps

- Wrap keeps DeRoyal® Temperature Therapy blanket well insulated and provides a simple way to ensure precise blanket placement

**Indications:** Pain and soft tissue swelling as a result of surgery or trauma

Description	Measurement	Product #
Chest/Lumbar	12" x 58"	T6100
Knee	15" x 27"	T6110
Shoulder	10½" x 10½"	T6120

### ActiveWrap™ Thermal Supports

- Constructed of comfortable Active Medical Plush™ material for best ergonomic fit
- Gel packs provide long lasting cold or hot therapy
- Gel packs do not migrate or push away under pressure providing effective uniform therapy
- Packs can be removed and uniquely positioned within wraps to provide more targeted treatment and improved compression
- Dual layer Microban® pouch allows user to control and temper cold/hot therapy by an average of 5° F
- Can be used without thermal packs for compression, support, and warmth
- Post-op (long-duration) knee/leg, hip, shoulder, and replacement packs are designed to stay cold for 2+ hours (for cold therapy only)
- Post-op shoulder features an open sleeve design for easy donning and doffing

**Indications:** Pain and soft tissue swelling as a result of surgery or trauma

### Knee/Leg

Size	Thigh Circumference	Pack Type, Size & Qty		Product #
		Lightweight (Cold/Hot)	Long-duration (Cold Only)	
Small/Medium	< 16"	7" x 10" (2)	—	9373-00
Small/Medium Post-Op	< 16"	—	7" x 10" (2)	9373-02
Small/Medium Post-Op	< 16"	—	7" x 10" (4)	9373-04
Large/X-Large	16"+	7" x 10" (2)	—	9373-01
Large/X-Large Post-Op	16"+	—	7" x 10" (2)	9373-03
Large/X-Large Post-Op	16"+	—	7" x 10" (4)	9373-05
X-Wide Post-Op	16"+	—	7" x 10" (3)	9373-06



### Hip

Size	Pack Type, Size & Qty		Product #
	Lightweight (Cold/Hot)	Long-duration (Cold Only)	
Universal Post-Op	—	13" x 10" (2)	9372-00
Low-Profile Post-Op	—	10" x 10" (2)	9372-01



### Shoulder

Size	Chest Circumference	Pack Type, Size & Qty		Product #
		Lightweight (Cold/Hot)	Long-duration (Cold Only)	
Small/Medium	< 38"	7" x 10" (2)	—	9371-00
Large/X-Large	38"+	7" x 10" (2)	—	9371-01
Shoulder Post-Op	38"+	—	7" x 10" (2)	9371-02
XL Chest Strap 53"	—	—	—	9371-XLS



# Temperature Therapy

## Active Wrap™ Thermal Supports



Back

### Back

Size	Waist Circumference		Pack Type, Size & Qty		Product #
	(Cold/Hot)	(Cold Only)			
Small/Medium	< 35"	7" x 10" (1)	—	9374-00	
Large/X-Large	35" - 54"	7" x 10" (1)	—	9374-01	



Foot/Ankle

### Foot/Ankle

Size	Shoe Size		Pack Type, Size & Qty		Product #
	Male	Female	Lightweight (Cold/Hot)	Long-duration (Cold Only)	
Small/Medium	4- 10	4- 11	4½" x 6½" (2)	—	9375-00
Large/X-Large	10 +	11+	4½" x 6½" (2)	—	9375-01



Wrist/Hand

### Wrist/Hand

Size	Pack Type, Size & Qty		Product #
	Lightweight (Cold/Hot)	Long-duration (Cold Only)	
Universal	4½" x 6½" (2)	—	9376-00



Replacement Pack

### Replacement Packs

Size	Pack Type, Size & Qty		Product #
	Lightweight (Cold/Hot)	Long-duration (Cold Only)	
Small/Medium	4½" x 6½" (48)	—	9378-01
Large/X-Large	7" x 10" (24)	—	9378-02
Large/X-Large Post-Op	—	7" x 10" (12)	9378-03
X-Large	—	10" x 10" (12)	9372-02

### Universal Cold/Hot Therapy Wrap

- Comfortable neoprene material is hook receivable for multiple placement options
- Removable Y-tabs on 42" strap allow for strap trimming for varying patient anatomy
- Interior sleeve holds cold/hot pack in place

**Indications:** Pain and soft tissue swelling as a result of surgery or trauma

Description	Size	# Packs	Product #
Universal	12" x 5"	1	9390-00



### Neoprene Cold/Hot Therapy Wraps

- Constructed of comfortable neoprene material for an ergonomic fit
- Each wrap is packaged with 2 gel packs to provide hot or cold therapy
- Packs can be uniquely positioned within wraps to provide more targeted treatment and improved compression
- Can be worn without gel packs for compression, support and warmth
- Shoulder wraps available in each or 10/Case quantity

**Indications:** Pain and soft tissue swelling as a result of surgery or trauma

Description	Size (Circumference)	# Packs	Product #
Shoulder	47" x 13"	2	9361-00
	(< 75" Chest)	2	9361-10 (10/Case)
Knee	25½" x 14"	2	9363-00
	(< 25" Thigh)		



### Foam Cold/Hot Therapy Wraps

- Laminated foam construction keeps cold/hot pack insulated
- Anatomically designed to hold cold/hot pack in place
- Foam can be tightened to apply even compression and help reduce swelling
- Universal right/left

**Indications:** Pain and soft tissue swelling as a result of surgery or trauma

Description	Size (Circumference)	# Packs	Product #
Shoulder	47" x 13"	2	9381-00
	(< 47" Chest)	4	9381-10
Knee	25½" x 14"	2	9383-00
	(< 25" Thigh)	4	9383-10
Knee w/Straps	30" x 16"	4	9387-00
	(< 30" Thigh)		
Back	58" x 10"	2	9384-00
	(< 58" Waist)		
Ankle	14½" x 5"	2	9385-00
	(< 15" Ankle)		
Wrist	14" x 5¼"	1	9386-00
	(< 14" Wrist)		



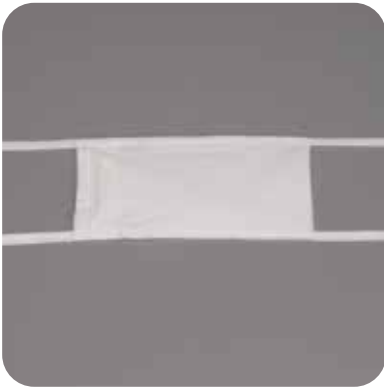


### Cold/Hot Pack

- Reusable for both cold or hot therapy
- Packaged each or 20/Case

**Indications:** Pain and soft tissue swelling as a result of surgery or trauma

Measurement	Each	Case
4½" x 10"	9380-00	9380-20



### Chill-n-Wrap Ice Bag

- Constructed with a soft outer cover with moisture absorbing middle layer
- Leak-proof plastic bladder prevents patient exposure
- Plastic closure clip is completely enclosed
- Conformable opening holds shape while ice is being added
- Packaged 10/Case

**Indications:** Pain and soft tissue swelling as a result of surgery or trauma

Size	Pouch Dimensions	Strap Length	Product #
Large	6" x 16"	16½"	8726-50

### ™ & ® Products

Active Medical Plush™ is a trademark of ActiveWrap, Inc.  
The AW ActiveWrap logo is a registered trademark of ActiveWrap, Inc.  
ActiveWrap™ is a trademark of ActiveWrap, Inc.  
Air-Soft™ is a trademark of DeRoyal Industries, Inc.  
ATC™ is a trademark of DeRoyal Industries, Inc.  
BOA® is a registered trademark of Boa Technology Inc.  
Capital™ is a trademark of DeRoyal Industries, Inc.  
Comfo-EZE™ is a trademark of DeRoyal Industries, Inc.  
Comfort Cool® is a registered trademark of North Coast Medical, Inc.  
CoolJet® is a registered trademark of DeRoyal Industries, Inc.  
Darco® is a registered trademark of Darco International, Inc.  
DeRoyal® is a registered trademark of DeRoyal Industries, Inc.  
The DeRoyal logo is a registered trademark of DeRoyal Industries, Inc.  
Element® is a registered trademark of DeRoyal Industries, Inc.  
Grid Iron® is a registered trademark of DeRoyal Industries, Inc.  
HeelWedge™ is a trademark of Darco International, Inc.  
Hypercontrol® is a registered trademark of DeRoyal Industries, Inc.  
JetStream™ is a trademark of DeRoyal Industries, Inc.  
The JetStream logo is a registered trademark of DeRoyal Industries, Inc.  
LMB™ is a trademark of DeRoyal Industries, Inc.  
Lycra is a registered trademark of Invista North America S.A.R.L. Corp.  
MAXAlign® is a registered trademark of DeRoyal Industries, Inc.  
MedSurg™ is a trademark of Darco International, Inc.  
Microban® is a registered trademark of Microban Products Company.  
Pacesetter™ is a trademark of DeRoyal Industries, Inc.  
Plastazote® is a registered trademark of Zotefoams PLC  
Prolign® is a registered trademark of DeRoyal Industries, Inc.  
OrthoWedge™ is a trademark of Darco International, Inc.  
Rep Band® is a registered trademark of Elliot Goldberg  
Solace® is a registered trademark of DeRoyal Industries, Inc.  
Thera-Band® is a registered trademark of Performance Health Group, LLC  
Tri-tex™ is a trademark of DeRoyal Industries, Inc.  
Ultralign® is a registered trademark of DeRoyal Industries, Inc.  
Warrior® is a registered trademark of DeRoyal Industries, Inc.  
Wire-Foam™ is a trademark of DeRoyal Industries, Inc.

1000275.....	48	1030167.....	87	1100115.....	45	11630005.....	34
1000285.....	48	1030197.....	87	11201000.....	8	11630006.....	34
1001-01.....	4	1030227.....	87	11202000.....	8	11630007.....	34
1001-02.....	4	1030247.....	87	1120917.....	82	11630008.....	34
1001-03.....	4	1030251.....	3	11211000.....	8	11631000.....	33
1001-04.....	4	1030301.....	3	11212000.....	8	11632000.....	33
1001-05.....	4	1030351.....	3	11221000.....	8	11640005.....	34
1002-01.....	4	1030401.....	3	11222000.....	8	11640006.....	34
1002-02.....	4	1040025.....	45	11223000.....	8	11640007.....	34
1002-03.....	4	1040115.....	45	11231000.....	8	11640008.....	34
1002-04.....	4	1040127.....	87	11232000.....	8	11650005.....	35
1002-05.....	4	1040159.....	32	11241000.....	8	11650006.....	35
1003-01.....	4	1040167.....	87	11242000.....	8	11650007.....	35
1003-02.....	4	1040197.....	87	11251000.....	8	11690001.....	36
1003-03.....	4	1040227.....	87	11252000.....	8	11690002.....	36
1003-04.....	4	1040247.....	87	11253000.....	8	11690005.....	36
1003-05.....	4	1044-30.....	7	11261000.....	8	11690006.....	36
1004-01.....	4	1044-31.....	7	11262000.....	8	11690007.....	36
1004-02.....	4	1044-40.....	7	11263000.....	8	11690008.....	36
1006-01.....	4	1044-41.....	7	11271000.....	8	1190917.....	82
1006-02.....	4	1044-80.....	7	11272000.....	8	1200-50.....	118
1006-03.....	4	1044-81.....	7	11281000.....	8	1201-50.....	118
1006-04.....	4	1044-82.....	7	11282000.....	8	1202-50.....	118
1006-05.....	4	1044-83.....	7	11291000.....	8	1203-50.....	118
1010025.....	45	1044-84.....	7	11292000.....	8	1204-50.....	118
10101.....	37	1044-85.....	7	11293000.....	8	1211-100.....	118
1010115.....	45	1044-90.....	7	11311000.....	8	1212-100.....	118
1010127.....	87	1050025.....	45	11312000.....	8	1213-100.....	118
1010159.....	32	1050115.....	45	11313000.....	8	1220917.....	82
1010167.....	87	1050159.....	32	1140917.....	82	1240917.....	82
1010197.....	87	1050197.....	87	11421000.....	9	125BL.....	56
10102.....	37	1050227.....	87	11422000.....	9	125BR.....	56
1010227.....	87	1050247.....	87	11423000.....	9	125CL.....	56
1010247.....	87	1056-00.....	3	11431000.....	9	125CR.....	56
10103.....	37	1056-02.....	3	11432000.....	9	125DL.....	56
10104.....	37	1056-03.....	3	11433000.....	9	125DR.....	56
10105.....	37	1056-04.....	3	11441000.....	9	12850004.....	41
10106.....	37	1056-05.....	3	11442000.....	9	12850005.....	41
1018-01.....	5	1057-00.....	3	11443000.....	9	12850006.....	41
1018-02.....	5	1057-01.....	3	11451000.....	9	12850007.....	41
1018-03.....	5	1057-02.....	3	11452000.....	9	12850008.....	41
1018-04.....	5	1057-03.....	3	11461000.....	9	12850009.....	41
1018-05.....	5	1057-04.....	3	11462000.....	9	12870000.....	42
1020025.....	45	1057-05.....	3	11471000.....	9	12982105.....	45
1020115.....	45	1060025.....	45	11472000.....	9	12982106.....	45
1020127.....	87	1060115.....	45	11481000.....	9	12982107.....	45
1020159.....	32	1061-00.....	3	11481001.....	9	12982108.....	45
1020167.....	87	1061-01.....	3	11481002.....	9	12982205.....	45
1020197.....	87	1061-02.....	3	11481003.....	9	12982206.....	45
1020227.....	87	1061-03.....	3	11482000.....	9	12982207.....	45
1020247.....	87	1061-04.....	3	11482001.....	9	12982208.....	45
1020251.....	3	1061-05.....	3	11482002.....	9	12991102.....	45
1020301.....	3	1070025.....	45	11482003.....	9	12991202.....	45
1020351.....	3	1070115.....	45	11483000.....	9	12992102.....	45
1020401.....	3	1080025.....	45	11483001.....	9	12992202.....	45
1030025.....	45	1080115.....	45	11483002.....	9	12993105.....	45
1030115.....	45	1090025.....	45	11483003.....	9	12993106.....	45
1030127.....	87	1090115.....	45	1160917.....	82	12993107.....	45
1030159.....	32	1100025.....	45	11620000.....	33	12993108.....	45



# Index

12993205	45	13790309	23	14023010	74	14811008	79
12993206	45	13790405	23	14513112	72	14811009	79
12993207	45	13790406	23	14513134	72	14811010	79
12993208	45	13790407	23	14513156	72	14840104	76
13400005	20	13790408	23	14513212	72	14840105	76
13400006	20	13790409	23	14513234	72	14840106	76
13400007	20	13810000	21	14513256	72	14840107	76
13400008	20	13850000	20	14514100	71	14840108	76
13480056	22	13850005	20	14514200	71	14840109	76
13480078	22	13850007	20	14514300	71	14840204	76
13500004	19	13850008	20	14514400	71	14840205	76
13500005	19	13850009	20	14515105	72	14840206	76
13500006	19	13850010	20	14515106	72	14840207	76
13500007	19	13850011	20	14515107	72	14840208	76
13500008	19	13850056	20	14515108	72	14840209	76
13500009	19	13850067	20	14515109	72	14882004	78
13501004	19	13860900	21	14515205	72	14882005	78
13501005	19	13871000	24	14515206	72	14882006	78
13501006	19	13872900	24	14515207	72	14882007	78
13501007	19	13950000	24	14515208	72	14882008	78
13501008	19	13960000	24	14515209	72	14882009	78
13501009	19	13970000	24	14534105	73	14882010	78
13502004	19	13981000	24	14534106	73	14910005	75
13502005	19	13982000	24	14534107	73	14910006	75
13502006	19	13983000	24	14534108	73	14910007	75
13502007	19	13984000	24	14534109	73	14910008	75
13502008	19	13985000	24	14534205	73	14910009	75
13590000	25	13991000	24	14534206	73	14910010	75
13600000	25	13992000	24	14534207	73	14970005	88
13630000	25	13993000	24	14534208	73	14970006	88
13640000	25	13994000	24	14534209	73	14970007	88
13650000	25	13995000	24	14630004	75	1502-25	118
13651056	25	14012004	74	14630005	75	1502-50	118
13652067	25	14012005	74	14630006	75	1503-25	118
13653008	25	14012006	74	14630007	75	1503-50	118
13654009	25	14012007	74	14630008	75	1504-25	118
13655010	25	14012008	74	14630009	75	1504-50	118
13660000	25	14012009	74	14630010	75	1505-25	118
13661056	25	14012010	74	14640004	77	1505-50	118
13662067	25	14013004	74	14640005	77	1506-25	118
13663008	25	14013005	74	14640006	77	1506-50	118
13664009	25	14013006	74	14640007	77	1507-50	118
13665010	25	14013007	74	14640008	77	1512-100	118
13740300	23	14013008	74	14640009	77	1513-100	118
13740400	23	14013009	74	14750004	77	1514-100	118
13760300	23	14013010	74	14750005	77	1515-100	118
13760306	23	14022004	74	14750006	77	1516-100	118
13760307	23	14022005	74	14750007	77	1517-100	118
13760308	23	14022006	74	14750008	77	15400001	105
13760400	23	14022007	74	14750009	77	15500031	101
13760406	23	14022008	74	14801005	80	15500032	101
13760407	23	14022009	74	14801006	80	15500033	101
13760408	23	14022010	74	14801007	80	15500034	101
13780300	23	14023004	74	14801008	80	15500035	101
13780400	23	14023005	74	14801009	80	15500036	101
13790305	23	14023006	74	14811004	79	15500037	101
13790306	23	14023007	74	14811005	79	15500038	101
13790307	23	14023008	74	14811006	79	15500039	101
13790308	23	14023009	74	14811007	79	15500040	101

15500041.....	101	158-02.....	18	2033-03.....	110	340M/LL.....	55
15500042.....	101	158-03.....	18	2033-04.....	110	340M/LR.....	55
15500043.....	101	158-04.....	18	2035-01.....	110	340S/ML.....	55
15500044.....	101	158-05.....	18	2035-02.....	110	340S/MR.....	55
15500045.....	101	158-06.....	18	2035-03.....	110	343M/LL.....	55
15500046.....	101	159-01.....	17	2035-04.....	110	343M/LR.....	55
15500047.....	101	159-02.....	17	2035-05.....	110	343S/ML.....	55
15500048.....	101	159-03.....	17	2039-00.....	111	343S/MR.....	55
15500049.....	101	19401.....	90	2039-01.....	111	345M/LL.....	55
15500050.....	101	19402.....	90	2039-02.....	111	345M/LR.....	55
155-01.....	18	19403.....	90	2039-03.....	111	345S/ML.....	55
155-02.....	18	19404.....	90	2039-04.....	111	345S/MR.....	55
155-03.....	18	19405.....	90	2039-05.....	111	348LL.....	53
155-04.....	18	19406.....	90	2039-98.....	111	348LR.....	53
155-05.....	18	2004-00.....	110	2039-99.....	111	348ML.....	53
155-06.....	18	2004-01.....	110	2041-00.....	107	348MR.....	53
155-07.....	18	2004-02.....	110	2041-01.....	107	348SL.....	53
155-08.....	18	2004-03.....	110	2041-02.....	107	348SR.....	53
15510005.....	105	2004-04.....	110	2041-03.....	107	348XLL.....	53
15510006.....	105	2004-05.....	110	2041-07.....	107	348XLR.....	53
15510007.....	105	2006-02.....	107	2041-08.....	107	348XSL.....	53
15510008.....	105	2006-03.....	107	2041-09.....	107	348XSR.....	53
15570004.....	103	2006-04.....	107	2044-01.....	106	350LL.....	52
15570005.....	103	2006-07.....	107	2044-02.....	106	350LR.....	52
15570006.....	103	2006-08.....	107	2044-03.....	106	350ML.....	52
15570007.....	103	2006-09.....	107	2044-04.....	106	350MR.....	52
15570008.....	103	2007-01.....	107	2044-07.....	106	350SL.....	52
15580002.....	103	2007-02.....	107	2044-08.....	106	350SR.....	52
15580005.....	103	2007-03.....	107	2044-09.....	106	350XLL.....	52
15580006.....	103	2007-04.....	107	2045-01.....	108	350XLR.....	52
15580008.....	103	2007-05.....	107	2045-02.....	108	350XSL.....	52
15580067.....	103	2007-06.....	107	2045-03.....	108	350XSR.....	52
15590002.....	103	2007-07.....	107	2045-04.....	108	350XXLL.....	52
15590005.....	103	2007-08.....	107	2045-05.....	108	350XXLR.....	52
15590006.....	103	2007-09.....	107	3001-02.....	26	351LL.....	48
15590008.....	103	2007-10.....	107	3001-03.....	26	351LR.....	48
15590067.....	103	2020-01.....	108	3001-04.....	26	351ML.....	48
15600004.....	95	2020-02.....	108	3001-05.....	26	351MR.....	48
15600005.....	95	2020-03.....	108	3001-06.....	26	351SL.....	48
15600006.....	95	2020-04.....	108	3004-02.....	26	351SR.....	48
15600007.....	95	2020-11.....	108	3004-03.....	26	351XLL.....	48
15600008.....	95	2020-12.....	108	3004-04.....	26	351XLR.....	48
15600009.....	95	2020-13.....	108	3004-06.....	26	351XSL.....	48
157-01.....	18	2020-14.....	108	3004-11.....	26	351XSR.....	48
157-02.....	18	2021-01.....	108	3004-12.....	26	359LL.....	54
157-03.....	18	2021-02.....	108	3004-13.....	26	359LR.....	54
157-04.....	18	2021-03.....	108	3004-14.....	26	359ML.....	54
157-05.....	18	2021-04.....	108	3004-16.....	26	359MR.....	54
157-06.....	18	2021-11.....	108	3015-01.....	26	359SL.....	54
15780004.....	102	2021-12.....	108	3015-02.....	26	359SR.....	54
15780005.....	102	2021-13.....	108	3015-03.....	26	359XLL.....	54
15780006.....	102	2021-14.....	108	3015-04.....	26	359XLR.....	54
15780008.....	102	2027-01.....	111	3015-05.....	26	359XSL.....	54
15780067.....	102	2027-02.....	111	325BL.....	56	359XSR.....	54
15800005.....	102	2027-03.....	111	325BR.....	56	360LL.....	54
15800006.....	102	2027-04.....	111	325CL.....	56	360LR.....	54
15800008.....	102	2027-05.....	111	325CR.....	56	360ML.....	54
15800067.....	102	2033-01.....	110	325DL.....	56	360MR.....	54
158-01.....	18	2033-02.....	110	325DR.....	56	360SL.....	54

# Index

360SR.....	54	4463-04.....	87	5040-04.....	48	508B.....	58
360XLL.....	54	4463-05.....	87	504A.....	57	508C.....	58
360XLR.....	54	4464-02.....	87	504AA.....	57	508D.....	58
360XSL.....	54	4464-03.....	87	504B.....	57	6000.....	62
360XSR.....	54	4464-04.....	87	504C.....	57	6003-01.....	44
361LL.....	54	4464-05.....	87	504D.....	57	6003-02.....	44
361LR.....	54	5005-01.....	47	5063-01.....	56	6003-03.....	44
361ML.....	54	5005-02.....	47	5063-02.....	56	6003-04.....	44
361MR.....	54	5005-03.....	47	5063-81.....	56	6004-01.....	43
361SL.....	54	5005-04.....	47	5063-82.....	56	6004-02.....	43
361SR.....	54	5015-01.....	50	5064-01.....	53	6004-03.....	43
361XLL.....	54	5015-02.....	50	5064-02.....	53	6004-04.....	43
361XLR.....	54	5015-03.....	50	5064-81.....	53	6005-00.....	42
361XSL.....	54	5015-04.....	50	5064-82.....	53	601A.....	60
361XSR.....	54	5015-05.....	50	5065-01.....	49	601AA.....	60
3-700A-01.....	124	5015-06.....	50	5065-02.....	49	601B.....	60
3-700A-02.....	124	5015-07.....	50	5065-81.....	49	601C.....	60
3-700A-03.....	124	5015-08.....	50	5065-82.....	49	601D.....	60
3-700A-98.....	124	5015-09.....	50	5066-80.....	47	602A.....	59
3-703A-00.....	124	5015-10.....	50	5066-81.....	47	602AA.....	59
4004-01.....	98	5016-02.....	50	5066-82.....	47	602B.....	59
4004-02.....	98	5016-03.....	50	5066-83.....	47	602C.....	59
4004-03.....	98	5016-04.....	50	5066-90.....	47	602D.....	59
4004-04.....	98	5016-05.....	50	5066-91.....	47	6101-01.....	10
4005-01.....	98	5016-07.....	50	5066-92.....	47	6101-02.....	10
4005-02.....	98	5016-08.....	50	5066-93.....	47	6101-03.....	10
4005-03.....	98	5016-09.....	50	5067-01.....	50	6104-00.....	10
4005-04.....	98	5016-10.....	50	5067-02.....	50	6105-00.....	10
4016-01.....	97	5019-01.....	51	5068-00.....	50	6157D02.....	39
4016-02.....	97	5019-02.....	51	5069-00.....	53	6157D03.....	39
4016-03.....	97	5019-03.....	51	5073-01.....	49	650A.....	61
4016-04.....	97	5019-04.....	51	5073-02.....	49	650B.....	61
4300.....	112	501A.....	57	5073-03.....	49	650C.....	61
4300/05AB.....	112	501AA.....	57	5073-04.....	49	650D.....	61
4300/05WK.....	112	501B.....	57	5073-05.....	49	650E.....	61
4301.....	112	501C.....	57	5073-06.....	49	670AABLK.....	61
4302.....	112	501D.....	57	5073-07.....	49	670ABLK.....	61
4306.....	112	5023-01.....	49	5073-08.....	49	670BBLK.....	61
4307.....	112	5023-02.....	49	5073-09.....	49	670CBLK.....	61
4433-01.....	86	5023-03.....	49	5073-10.....	49	670DBLK.....	61
4433-03.....	86	5023-04.....	49	5073-11.....	49	7041-01.....	85
4433-05.....	86	5023-05.....	49	5073-12.....	49	7041-02.....	85
4433-10.....	86	5023-06.....	49	5074-01.....	49	7041-03.....	85
4433-11.....	86	5023-07.....	49	5074-02.....	49	7041-04.....	85
4433-22.....	86	5023-08.....	49	5074-03.....	49	7041-05.....	85
4433-33.....	86	5023-09.....	49	5074-04.....	49	7041-11.....	85
4442-00.....	28	5023-10.....	49	5074-05.....	49	7041-22.....	85
4442-10.....	28	5026-00.....	55	5074-06.....	49	7041-33.....	85
4461-02.....	87	502A.....	59	5074-07.....	49	7041-44.....	85
4461-03.....	87	502B.....	59	5074-08.....	49	7041-55.....	85
4461-04.....	87	502C.....	59	5074-09.....	49	7042-01.....	81
4461-05.....	87	502D.....	59	5074-10.....	49	7042-02.....	81
4462-02.....	87	503A.....	60	507A.....	58	7042-03.....	81
4462-03.....	87	503B.....	60	507AA.....	58	7042-04.....	81
4462-04.....	87	503C.....	60	507B.....	58	7042-05.....	81
4462-05.....	87	503D.....	60	507C.....	58	7043-01.....	81
4462-06.....	87	5040-01.....	48	507D.....	58	7043-02.....	81
4463-02.....	87	5040-02.....	48	508A.....	58	7043-03.....	81
4463-03.....	87	5040-03.....	48	508AA.....	58	7043-04.....	81

7043-05.....	81	8017-53.....	37	9007-00.....	27	9115-01.....	66
7066-14.....	85	8017-54.....	37	9008-00.....	32	9115-02.....	66
7066-16.....	85	8020-00.....	39	9008-01.....	32	9115-03.....	66
7066-18.....	85	8020-01.....	39	9008-02.....	32	9115-04.....	66
7066-20.....	85	8023-01.....	38	9008-03.....	32	9115-05.....	66
7066-22.....	85	8023-02.....	38	9008-04.....	32	9115-06.....	66
7066-24.....	85	8023-03.....	38	9008-05.....	32	9119-01.....	64
7066-26.....	85	8023-04.....	38	9008-06.....	32	9119-02.....	64
7066-28.....	85	8023-05.....	38	9009-00.....	31	9119-03.....	64
7072-02.....	84	8029-00.....	40	9009-50.....	31	9119-04.....	64
7072-03.....	84	8029-01.....	40	9011-00.....	31	9119-05.....	64
7072-04.....	84	804.....	62	9012-00.....	31	9119-06.....	64
7072-05.....	84	8105-01.....	90	9013-00.....	28	9119-07.....	64
7091-03.....	83	8105-02.....	90	9013-02.....	28	9119-08.....	64
7091-04.....	83	8105-03.....	90	9013-03.....	28	9119-09.....	64
7091-05.....	83	8105-04.....	90	9013-04.....	28	9120-00.....	64
7091-06.....	83	8105-05.....	90	9014-00.....	27	9121-01.....	63
7091-07.....	83	8105-06.....	90	9023-00.....	30	9121-02.....	63
7091-08.....	83	8106-01.....	89	9023-01.....	30	9121-03.....	63
7091-14.....	83	8106-03.....	89	9023-02.....	30	9121-04.....	63
7091-15.....	83	8106-04.....	89	9023-03.....	30	9121-05.....	63
7091-16.....	83	8106-05.....	89	9023-04.....	30	9121-06.....	63
7091-17.....	83	8106-06.....	89	9100-00.....	66	9121-07.....	63
7091-18.....	83	8120-00.....	90	9101-01.....	67	9121-08.....	63
7091-50.....	82	8121-00.....	89	9101-02.....	67	9122-00.....	63
7091-51.....	82	8130-00.....	89	9101-03.....	67	9125-01.....	66
7091-52.....	82	8140-00.....	89	9101-04.....	67	9125-02.....	66
7091-55.....	82	8726-50.....	132	9101-05.....	67	9125-03.....	66
7091-56.....	82	8761-01.....	96	9101-06.....	67	9127-01.....	68
7091-57.....	82	8761-02.....	96	9105-01.....	67	9127-02.....	68
7091-58.....	82	8761-03.....	96	9105-02.....	67	9127-03.....	68
7102-22.....	10	8761-04.....	96	9105-03.....	67	9128-01.....	68
7116-01.....	11	8788-03.....	40	9105-04.....	67	9128-02.....	68
7117-02.....	11	8788-50.....	40	9105-05.....	67	9128-03.....	68
8001-01.....	37	8824-01.....	46	9105-06.....	67	9133-01.....	68
8001-02.....	37	8824-02.....	46	9105-07.....	67	9133-03.....	68
8001-03.....	37	8824-03.....	46	9105-08.....	67	9133-04.....	68
8001-04.....	37	8824-04.....	46	9109-01.....	64	9133-06.....	68
8001-05.....	37	8824-05.....	46	9109-02.....	64	9134-01.....	67
8004-01.....	36	8824-06.....	46	9109-03.....	64	9134-02.....	67
8004-02.....	36	8824-07.....	46	9110-01.....	64	9135-01.....	67
8004-03.....	36	8824-08.....	46	9110-02.....	64	9135-02.....	67
8004-04.....	36	8824-09.....	46	9110-03.....	64	9136-01.....	67
8004-05.....	36	8824-10.....	46	9111-01.....	65	9136-02.....	67
8004-06.....	36	9001-02.....	29	9111-02.....	65	9221-00.....	116
8004-11.....	36	9001-03.....	29	9111-03.....	65	9222-00.....	116
8004-12.....	36	9001-04.....	29	9111-04.....	65	9307-01.....	85
8004-13.....	36	9001-05.....	29	9111-05.....	65	9307-02.....	85
8004-14.....	36	9002-01.....	29	9111-06.....	65	9307-03.....	85
8004-15.....	36	9002-02.....	29	9111-07.....	65	9307-04.....	85
8004-16.....	36	9002-03.....	29	9111-08.....	65	9307-05.....	85
801.....	62	9002-04.....	29	9112-01.....	65	9307-06.....	85
8017-00.....	37	9002-05.....	29	9112-02.....	65	9361-00.....	131
8017-01.....	37	9003-02.....	30	9112-03.....	65	9361-10.....	131
8017-02.....	37	9003-03.....	30	9113-01.....	65	9363-00.....	131
8017-03.....	37	9003-04.....	30	9113-02.....	65	9371-00.....	129
8017-04.....	37	9003-05.....	30	9113-03.....	65	9371-01.....	129
8017-51.....	37	9006-00.....	27	9113-04.....	65	9371-02.....	129
8017-52.....	37	9006-50.....	27	9113-05.....	65	9371-XLS.....	129

# Index

9372-00.....	129	A141000.....	84	AB2150-10.....	93	AF1001-02.....	99
9372-01.....	129	A142000.....	84	AB2150-12.....	93	AF1001-03.....	99
9372-02.....	130	A142005.....	88	AB2150-14.....	93	AF1001-04.....	99
9373-00.....	129	A142006.....	88	AB2150-16.....	93	AF1001-05.....	99
9373-01.....	129	A142007.....	88	AB2150-18.....	93	AF1001-06.....	99
9373-02.....	129	A142008.....	88	AB2150-20.....	93	AF1001-07.....	99
9373-03.....	129	A142009.....	88	AB2340-00.....	91	AF1001-08.....	99
9373-04.....	129	A143000.....	84	AB2340-06.....	91	BF1120917.....	82
9373-05.....	129	A143005.....	88	AB2341-00.....	91	BF1160917.....	82
9373-06.....	129	A143006.....	88	AB2341-06.....	91	BF1190917.....	82
9374-00.....	130	A143007.....	88	AB2350-00.....	92	BF1220917.....	82
9374-01.....	130	A143008.....	88	AB2351-00.....	92	BF1240917.....	82
9375-00.....	130	A144000.....	84	AB2360-00.....	91	BF4433-12.....	86
9375-01.....	130	A144005.....	88	AB2361-00.....	91	BF4433-16.....	86
9376-00.....	130	A144006.....	88	AB2362-00.....	91	BF4433-19.....	86
9378-01.....	130	A144007.....	88	AB2801-10.....	95	BF4433-22.....	86
9378-02.....	130	A144008.....	88	AB2801-12.....	95	BF4433-24.....	86
9378-03.....	130	A144009.....	88	AB2801-14.....	95	BF4433-26.....	86
9380-00.....	132	A145000.....	84	AB2801-16.....	95	BF5066-80.....	47
9380-20.....	132	A146000.....	84	AB2801-18.....	95	BF5066-81.....	47
9381-00.....	131	A146005.....	88	AB2801-20.....	95	BF5066-82.....	47
9381-10.....	131	A146006.....	88	AB2801-22.....	95	BF5066-83.....	47
9383-00.....	131	A146007.....	88	AB2801-24.....	95	BF7072-01.....	84
9383-10.....	131	A146008.....	88	AB2801-26.....	95	BF7072-02.....	84
9384-00.....	131	A146009.....	88	AB2801-28.....	95	BF7072-03.....	84
9385-00.....	131	A147000.....	86	AB2900-10.....	94	BF7072-04.....	84
9386-00.....	131	A148000.....	86	AB2900-12.....	94	BF7072-05.....	84
9387-00.....	131	A149000.....	86	AB2900-14.....	94	BF7072-06.....	84
9390-00.....	131	A152305.....	106	AB2900-16.....	94	BS1000-10.....	22
A115000.....	5	A152306.....	106	AB2900-18.....	94	BS1000-12.....	22
A115005.....	5	A152307.....	106	AB2900-20.....	94	BS1000-14.....	22
A115006.....	5	A152308.....	106	AB3000-10.....	94	BS1000-16.....	22
A115007.....	5	A152405.....	106	AB3000-12.....	94	BS1000-18.....	22
A115008.....	5	A152406.....	106	AB3000-14.....	94	BS1000-20.....	22
A117000.....	5	A152407.....	106	AB3000-16.....	94	CA298.....	124
A117005.....	5	A9916-11.....	6	AB3000-18.....	94	CSG53510-A.....	102
A117006.....	5	A9916-12.....	6	AB3000-20.....	94	CSG53510-B.....	102
A117007.....	5	A9916-13.....	6	AB3100-10.....	94	CSG53510-C.....	102
A117008.....	5	A9916-14.....	6	AB3100-12.....	94	CSG53510-D.....	102
A118000.....	5	A9917-00.....	6	AB3100-14.....	94	CSG53520-A.....	102
A125104.....	52	A9917-01.....	6	AB3100-16.....	94	CSG53520-B.....	102
A125105.....	52	A9918-11.....	6	AB3100-18.....	94	CSG53520-C.....	102
A125106.....	52	A9918-12.....	6	AB3100-20.....	94	CSG53520-D.....	102
A125107.....	52	A9918-13.....	6	AD2003-18.....	121	CSG53550-A.....	102
A125108.....	52	A9918-14.....	6	AD2003-24.....	121	CSG53550-B.....	102
A125109.....	52	A9919-11.....	6	AD2003-PL.....	121	CSG53550-C.....	102
A125204.....	52	A9919-12.....	6	AD2004-DX.....	121	CSG53550-D.....	102
A125205.....	52	A9919-13.....	6	AD2004-FM.....	121	DEBV2.....	117
A125206.....	52	A9919-14.....	6	AD3005-00.....	121	DEBV3.....	117
A125207.....	52	A9920-11.....	6	AD3006-27.....	122	DEBV4.....	117
A125208.....	52	A9920-12.....	6	AD3026-00.....	122	DEBV6.....	117
A125209.....	52	A9920-13.....	6	AD9000-HK.....	123	DS1012-00.....	106
A131056.....	25	A9920-14.....	6	AD9001-HK.....	123	DS1013-10.....	106
A131067.....	25	AB2140-10.....	93	AD9002-HK.....	123	DS1013-12.....	106
A132056.....	25	AB2140-12.....	93	AF1000-01.....	99	DS1013-14.....	106
A132067.....	25	AB2140-14.....	93	AF1000-02.....	99	DS1014-10.....	106
A133000.....	25	AB2140-16.....	93	AF1000-03.....	99	DS1014-12.....	106
A140000.....	86	AB2140-18.....	93	AF1000-04.....	99	DS1014-14.....	106
A140001.....	86	AB2140-20.....	93	AF1001-01.....	99	DS1014-16.....	106

DS1015-10.....	109	HY1001-CT.....	122	NE7701-77.....	80	NE7732-74.....	97
DS1015-12.....	109	HY1001-RD.....	122	NE7702-71.....	79	NE7732-75.....	97
DS1015-14.....	109	KB3000-01.....	70	NE7702-72.....	79	NE7732-76.....	97
DS1016-10.....	109	KB6000-00.....	71	NE7702-73.....	79	NE7738-70.....	54
DS1016-12.....	109	KB6000-01.....	71	NE7702-74.....	79	NE7740-70.....	51
DS1016-14.....	109	KB9000-01.....	71	NE7702-75.....	79	NE7741-12.....	21
DS1016-16.....	109	M10-070.....	116	NE7702-76.....	79	NE7741-13.....	21
EB2.....	117	M10-070-C.....	116	NE7702-77.....	79	NE7741-14.....	21
EB3.....	117	M1133.....	113	NE7710-70.....	79	NE7741-15.....	21
EB4.....	117	M1133-38.....	113	NE7710-71.....	79	NE7741-16.....	21
EB6.....	117	M1150.....	113	NE7711-71.....	76	NE7741-17.....	21
EB6000-01.....	41	M1151.....	113	NE7711-72.....	76	NEP7790-71.....	77
EB6000-02.....	41	M1153.....	113	NE7711-73.....	76	NEP7790-72.....	77
FB1000-10.....	69	M13-055.....	115	NE7711-74.....	76	NEP7790-73.....	77
FB1000-12.....	69	M13-100.....	115	NE7711-75.....	76	NEP7790-74.....	77
FB1000-14.....	69	M13-500.....	115	NE7711-76.....	76	NEP7790-75.....	77
FB1000-16.....	69	M2035.....	114	NE7711-81.....	76	NEP7790-76.....	77
FB2000-10.....	69	M2616D01.....	119	NE7711-82.....	76	NEP779371L.....	76
FB2000-12.....	69	M2616D25.....	119	NE7711-83.....	76	NEP779371R.....	76
FB2000-14.....	69	M2616D72.....	119	NE7711-84.....	76	NEP779372L.....	76
FB2000-16.....	69	M3000D08.....	115	NE7711-85.....	76	NEP779372R.....	76
FB3000-10.....	69	M3002D08.....	115	NE7711-86.....	76	NEP779373L.....	76
FB3000-12.....	69	M3002D09.....	115	NE7717-71.....	78	NEP779373R.....	76
FB3000-14.....	69	M5001-L.....	113	NE7717-72.....	78	NEP779374L.....	76
FB3000-16.....	69	M5001-M.....	113	NE7717-73.....	78	NEP779374R.....	76
FB3000-20.....	69	M5001-S.....	113	NE7717-74.....	78	NEP779375L.....	76
FB3000-22.....	69	M5001-XL.....	113	NE7717-75.....	78	NEP779375R.....	76
FB3000-24.....	69	M5001-XXL.....	113	NE7717-76.....	78	NEP779376L.....	76
FB3000-26.....	69	M5001-XXXL.....	113	NE7717-77.....	78	NEP779376R.....	76
FB4000-10.....	69	M5164.....	120	NE7718-71.....	78	NS2000-10.....	100
FB4000-12.....	69	M5164-YL.....	120	NE7718-72.....	78	NS2000-12.....	100
FB4000-14.....	69	M5165.....	120	NE7718-73.....	78	NS2000-14.....	100
FB5000-10.....	69	M5166.....	119	NE7718-74.....	78	NS2000-20.....	100
FB5000-12.....	69	M5166-72.....	119	NE7718-75.....	78	NS2000-21.....	100
FB5000-14.....	69	M5166-84.....	119	NE7718-76.....	78	SC1000-00.....	92
FB5000-16.....	69	M5166-B.....	119	NE7718-77.....	78	SL5002-01.....	104
FB5000-18.....	69	M5166Y.....	119	NE7722-72.....	75	SL5002-03.....	104
FB5000-20.....	69	M5166Y-72.....	119	NE7722-73.....	75	SL5002-05.....	104
FB5000-30.....	69	M5167.....	120	NE7722-74.....	75	SL5002-07.....	104
FB5000-32.....	69	M5168.....	120	NE7722-75.....	75	SL5002-09.....	104
FB5000-34.....	69	M5168-Y.....	120	NE7722-76.....	75	SL8001-01.....	104
FB5000-36.....	69	M5168-YL.....	120	NE7722-77.....	75	SL8001-03.....	104
FB5000-38.....	69	M7035-L.....	114	NE7727-72.....	43	SL8001-05.....	104
FB5000-40.....	69	M7035-M.....	114	NE7727-73.....	43	SL8001-07.....	104
HC2000-10.....	100	M7035-S.....	114	NE7727-74.....	43	SL8001-09.....	104
HC2000-12.....	100	M7035-SB.....	114	NE7727-75.....	43	SL8001-33.....	104
HC2000-14.....	100	M7035-XL.....	114	NE7727-76.....	43	SL8001-35.....	104
HEB4.....	117	M7035-XS.....	114	NE7728-72.....	43	SL8001-37.....	104
HEB6.....	117	MEP70.....	12	NE7728-73.....	43	T5015NS.....	127
HS1005-08.....	109	MLP30-15.....	12	NE7728-74.....	43	T5015ST.....	127
HS1005-10.....	109	MTD33-15.....	12	NE7728-75.....	43	T5025NS.....	127
HS1005-12.....	109	MTS33-15.....	12	NE7728-76.....	43	T5025ST.....	127
HS1005-14.....	109	MTS33-15-S.....	12	NE7730-70.....	42	T5035NS.....	127
HS1005-16.....	109	NE7701-71.....	80	NE7731-72.....	43	T5035NS-10.....	127
HS2025-08.....	109	NE7701-72.....	80	NE7731-73.....	43	T5035NS-L.....	127
HS2025-10.....	109	NE7701-73.....	80	NE7731-74.....	43	T5035NS-L-10.....	127
HS2025-12.....	109	NE7701-74.....	80	NE7731-75.....	43	T5035ST.....	127
HS2025-14.....	109	NE7701-75.....	80	NE7732-72.....	97	T5035ST-10.....	127
HS2025-16.....	109	NE7701-76.....	80	NE7732-73.....	97	T5035ST-L.....	127

# Index

T5035ST-L-10	127	TX9902-02	38	UPL3630-15	15	UPT4533-15	13
T5036NS	127	TX9902-02/100	38	UPL3730-15	15	UPT4633-15	13
T5036NS-10	127	TX9902-03	38	UPL4330-15	15	UPT4733-15	13
T5036NS-L	127	TX9902-03/100	38	UPL4430-15	15	USPK	13
T5036NS-L-10	127	TX9902-04	38	UPL4530-15	15	USPK-S	13
T5036ST	127	TX9902-04/100	38	UPL4630-15	15	WLK02-W	124
T5036ST-10	127	TX9902-05	38	UPL4730-15	15		
T5036ST-L	127	TX9902-05/100	38	UPLP2330-15	16		
T5036ST-L-10	127	TX9902-06	38	UPLP2330-25	16		
T5037NS	127	TX9902-06/100	38	UPLP2430-15	16		
T5037NS-10	127	TX9903-02	46	UPLP2430-25	16		
T5037NS-L	127	TX9903-03	46	UPLP2530-15	16		
T5037NS-L-10	127	TX9903-04	46	UPLP2530-25	16		
T5037ST	127	TX9903-05	46	UPLP2630-15	16		
T5037ST-10	127	TX9903-07	46	UPLP2630-25	16		
T5037ST-L	127	TX9903-08	46	UPLP2730-15	16		
T5037ST-L-10	127	TX9903-09	46	UPLP2730-25	16		
T5055NS	127	TX9903-10	46	UPLP4330-15	15		
T5055ST	127	TX9904-01	46	UPLP4430-15	15		
T5075NS	128	TX9904-02	46	UPLP4530-15	15		
T5075ST	128	TX9904-03	46	UPLP4630-15	15		
T5085NS	128	TX9904-04	46	UPLP4730-15	15		
T5085ST	128	TX9904-05	46	UPLT2333-15	14		
T6100	128	TX9904-06	46	UPLT2333-25	14		
T6110	128	TX9904-07	46	UPLT2433-15	14		
T6120	128	TX9904-08	46	UPLT2433-25	14		
T700	125	TX9904-09	46	UPLT2533-15	14		
T725NS	125	TX9904-10	46	UPLT2533-25	14		
T725ST	125	UDLE	13	UPLT2633-15	14		
T735NS	125	UEP2031	14	UPLT2633-25	14		
T735ST	125	UEP2051	14	UPLT2733-15	14		
T736NS	125	UPL1330-15	16	UPLT2733-25	14		
T736ST	125	UPL1330-25	16	UPT1333-15	14		
T737NS	125	UPL1430-15	16	UPT1333-25	14		
T737ST	125	UPL1430-25	16	UPT1433-15	14		
T800	126	UPL1530-15	16	UPT1433-25	14		
T825NS	126	UPL1530-25	16	UPT1533-15	14		
T825ST	126	UPL1630-15	16	UPT1533-25	14		
T835NS	126	UPL1630-25	16	UPT1633-15	14		
T835ST	126	UPL1730-15	16	UPT1633-25	14		
T836NS	126	UPL1730-25	16	UPT1733-15	14		
T836ST	126	UPL2330-0	16	UPT1733-25	14		
T837NS	126	UPL2330-15	16	UPT2333-15	14		
T837ST	126	UPL2330-25	16	UPT2333-25	14		
TX4442-00	27	UPL2430-0	16	UPT2433-15	14		
TX4442-02	27	UPL2430-15	16	UPT2433-25	14		
TX4442-03	27	UPL2430-25	16	UPT2533-15	14		
TX4442-04	27	UPL2530-0	16	UPT2533-25	14		
TX8020-00	39	UPL2530-15	16	UPT2633-15	14		
TX8023-21	38	UPL2530-25	16	UPT2633-25	14		
TX8023-22	38	UPL2630-0	16	UPT2733-15	14		
TX8023-23	38	UPL2630-15	16	UPT2733-25	14		
TX8023-24	38	UPL2630-25	16	UPT3333-15	13		
TX9023-00	30	UPL2730-0	16	UPT3433-15	13		
TX9023-01	30	UPL2730-15	16	UPT3533-15	13		
TX9023-02	30	UPL2730-25	16	UPT3633-15	13		
TX9023-03	30	UPL3330-15	15	UPT3733-15	13		
TX9023-04	30	UPL3430-15	15	UPT4333-15	13		
TX9902-01	38	UPL3530-15	15	UPT4433-15	13		









DeRoyal Industries, Inc.  
200 DeBusk Lane, Powell, TN 37849 USA  
888.938.7828 | [deroyal.com](http://deroyal.com)