



Improving Care. Improving Business.



M2200-WHL
& M2200-WHLX
Chair Belt Sensor
Non-Restraint Chair Belt for use
with DeRoyal Fall Monitors

Installation and Use Instructions

M2200 Chair Belt Sensor

WARNING: Failure to comply with warning may result in injury or death. This device is not suitable for all individuals. Other devices may be required. This device is not a substitute for visual monitoring by caregiver. The manufacturer does not claim that this device will stop elopement and/or stop falls. This device is designed to augment caregivers' comprehensive resident mobility management program. **THIS DEVICE IS NOT DESIGNED TO RESTRAIN OR HOLD INDIVIDUALS IN POSITION IN THEIR CHAIRS. Test this device before each use. Read the instructions and Legal Disclaimer.**

The DeRoyal M2200-WCB Wheel Chair Belt is designed to be installed by the end user. As such, it is the entire responsibility of the buyer to insure that the system is properly installed and tested. Further, the system is not designed to replace good caregiving practices including, but not limited to:

- A.) Direct patient supervision
- B.) Adequate training for staff personnel for fall prevention and elopement
- C.) Testing of the system before each use

WHERE PERMISSIBLE, IT IS THE SELLER'S INTENT TO LIMIT ANY LIABILITY FOR SPECIAL, CONSEQUENTIAL OR INCIDENTAL ECONOMIC DAMAGES TO REFUND OF THE PURCHASE PRICE OR REPLACEMENT OF THE GOODS. SELLER DISCLAIMS ANY LIABILITY FOR COMPENSATORY OR OTHER DAMAGES ARISING OUT OF THE USE OF THE GOODS.

WARNING: The manufacturer does not claim that this device will stop elopement and/or stop falls. This device is designed to augment caregivers' comprehensive resident mobility management program. This product is to be used by a licensed caregiver only.

Limited Warranty: Seller warrants that the goods sold will be free from defects of workmanship and manufacturing, for a period of one year from the date of sale. Other than this limited warranty, seller makes no express or implied warranties. Except for this limited warranty, NO EXPRESS OR IMPLIED WARRANTIES ARE GIVEN AND NO AFFIRMATION OF SELLER, BY WORDS OR ACTION, WILL CONSTITUTE A WARRANTY. THE GOODS BEING PURCHASED ARE BEING SOLD ON A "WITH ALL FAULTS" BASIS. THE ENTIRE RISK AS TO THE QUALITY AND PERFORMANCE OF THE GOODS IS WITH THE BUYER. SHOULD THE GOODS PROVE DEFECTIVE FOLLOWING THEIR PURCHASE, THE BUYER, AND NOT THE MANUFACTURER, DISTRIBUTOR OR RETAILER, ASSUMES THE ENTIRE COST OF ALL NECESSARY INSTALLATION, SERVICING OR REPAIRS.

DeRoyal, DeRoyal logo, Improving Care. Improving Business., are registered trademarks of DeRoyal Industries, Inc.



Improving Care. Improving Business.

DeRoyal Industries | 200 DeBusk Lane | Powell, TN 37849
888.938.7828 | 865.938.7828 | www.deroyal.com
Rev 1/18 | Part # 0-1926

Caregiver Key, Safety Auto-Reset are trademarks of The Smart Caregiver Corporation.

Copyright© 2018, DeRoyal. All rights reserved.

BELT PLACEMENT

- Place belt on patient's lap with the blue hook and loop closure in the front and center of patient.
- Wrap the belt around the patient and behind the wheelchair or recliner.
- Refer to step 2 for belt installation.
- Connect a belt cord to the monitor.
- Place the monitor out of reach of the patient. Suitable mounting locations include the back of wheelchair, or on the chair handle so that the patient cannot tamper with the monitor.

TEST THE SYSTEM

- Engage and disengage the hook and loop closure to set off the alert. The monitor is now active. The alert will sound whenever the hook and loop is disengaged.
- When the alert is activated, press the "Reset" button on front of the monitor to silence the alert or use the Caregiver Key, depending on your reset setting. The status light on front of monitor will blink when the belt is plugged into the monitor and buckled.

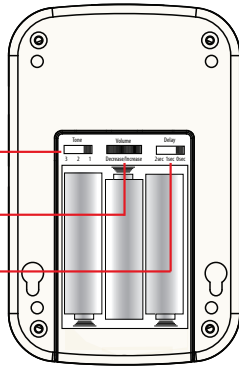


Need Set-up Help? (800) 650-3637

1 Install Batteries

The battery compartment door is secured with the included Phillips-head screw

Tone Adjustment
Alert Volume Adjustment
Alert Delay Adjustment



Close battery door.
Place monitor back into its plastic protective boot.

For more information about the Caregiver Key™, and how it can be used in your facility's Fall Assessment Program call 888-938-7828

2 Belt Installation

Wrap strap ends completely around patient and back of wheelchair or recliner.

Connect ends as described in images A-C.

Adjust the seat belt to the desired length by routing the strap through the buckle as shown in Figs A-C.

Pull to tighten. Make sure two fingers fit between belt and patient to ensure circulation is not compromised.



A. Route the strap through the buckle as shown

B. Strap routed correctly before tightening

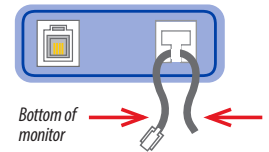
C. Pull the end of the strap to tighten

3 Mount the Fall Monitor

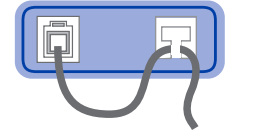
Mount the monitor out of reach of the resident. Suitable mounting location is the back of wheelchair, so that the resident cannot tamper with monitor or reach the "Reset" button.

4 Connect the Seat Belt to the Fall Monitor

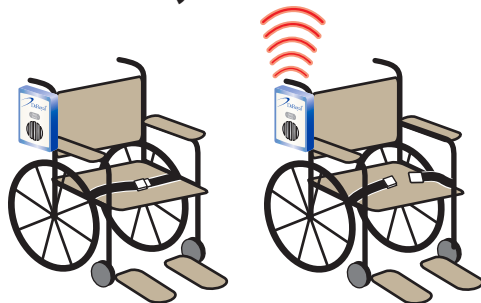
A. Pinch the cord together and route it through the strain relief recess.



B. Plug the cord into the monitor.



5 Test the System



Seat Belt Closed

Seat Belt Opened

Unfasten and fasten belt to set off the monitor. The monitor is now active. The monitor will sound the alert whenever the belt is unfastened.

When the monitor is activated press the "Reset" button. This will shut down the alerting mode.

Resetting the Monitor/ Tamper Proof™ Mode with Caregiver Key™ (Optional)

Caregivers can choose to reset the Monitor in either of two ways:

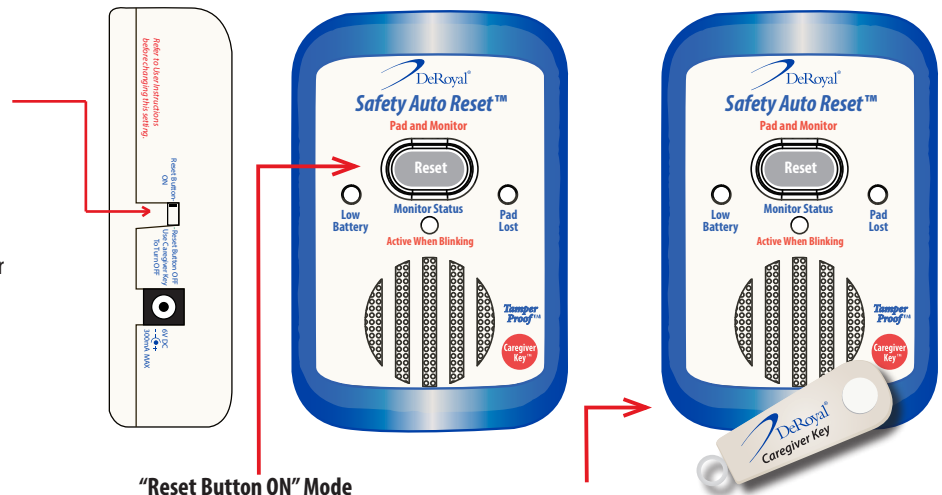
Select either "Reset Button ON" or "Reset Button OFF, Use Caregiver Key™ To Turn OFF" with the switch on the side of the DeRoyal Fall Monitor.

1. Press the **Reset** button on the front of the monitor ("Reset Button ON" mode).

2. Place the optional Caregiver Key™ over the red dot on the front of the monitor. ("Reset Button OFF, Use Caregiver Key™ To Turn OFF" mode).

This mode allows only the caregiver to reset the monitor.

For more information about the Caregiver Key™ and how it can be used in your facility's Fall Assessment Program call 888-938-7828



"Reset Button ON" Mode

Press the Reset button to reset the monitor.

"Reset Button OFF, Use Caregiver Key™ To Turn OFF" Mode.
Place the Caregiver Key™ over the red dot to reset the monitor.