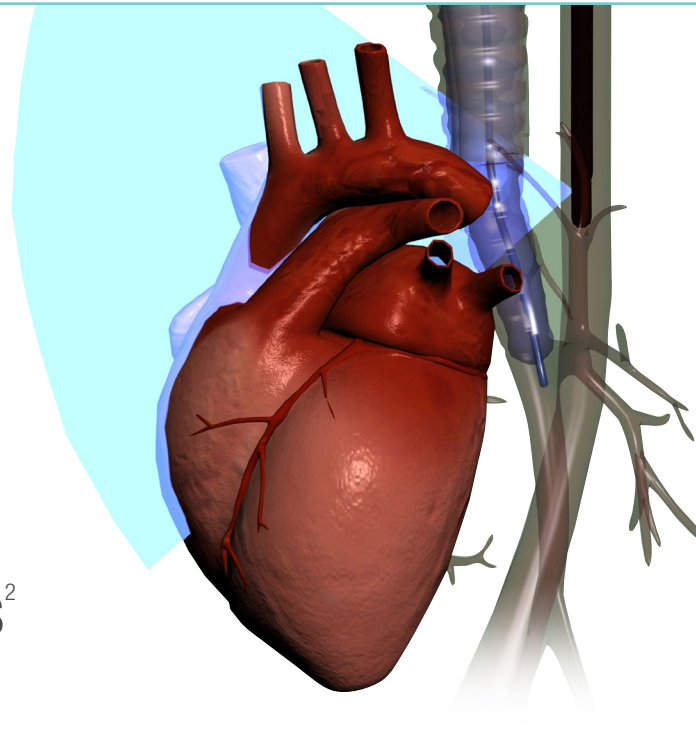


A-View[®]

ENDOTRACHEAL BALLOON CATHETER

Helping to resolve
the TEE 'blindspot'

- View in real-time
- Valid method¹
- Improves patient outcomes²



A-View[®] Device Indications

- Detection of Atherosclerosis
- Diagnosis of Aortic Diseases
- Monitoring Vascular and Cannula Flow

A-View[®] Device Contraindications

May not be used in case of severe respiratory failure, tracheomalacia or contraindications for the use of TEE (e.g. systemic tissue disease affecting the esophagus and/or trachea tissue to a degree not compatible with any aspect of TEE).

¹. Jansen Klomp et al. Eur Heart J Cardiovasc Imaging 2014;15(6):623-630

². Jansen Klomp et al. Poster Presentation Society CardioThoracic Anesthesia, San Diego, April 2016

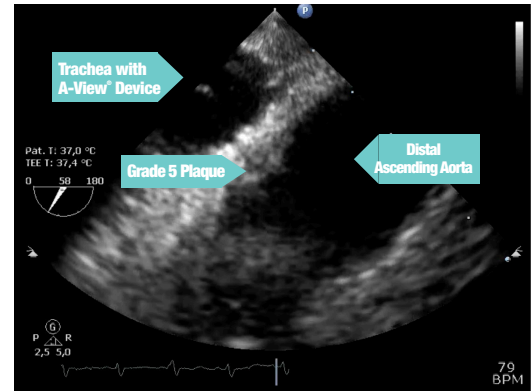


Improving Care. Improving Business.[®]

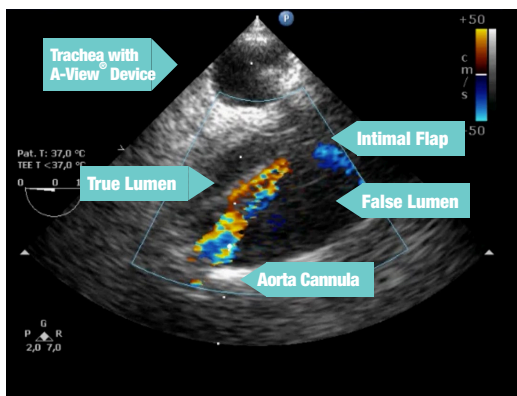
A-View®

ENDOTRACHEAL BALLOON CATHETER

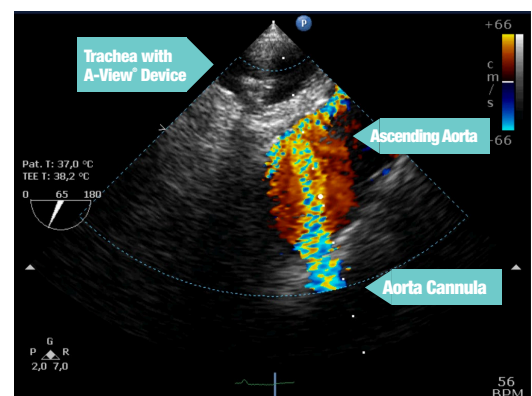
Diagnosis of Atherosclerosis



Diagnosis of Aortic Diseases



Monitoring Vascular and Cannula Flow



A-View is a registered trademark of Stroke2Prevent BV.
The DeRoyal logo and Improving Care. Improving Business.
are registered trademarks of DeRoyal Industries, Inc.